

## SUV39H2 antibody

Cat. No. GTX129167

宿主	Rabbit
克隆	Polyclonal
同种型	IgG
实验应用	WB
种属反应	Human, Mouse, Rat

引用文献 (1)

## 实验应用

## 应用说明

\*最佳稀释倍数与浓度应由研究人员确认

Suggested dilution	Recommended dilution
WB	1:500-1:3000

以下为常规应用缩写的中文注解

WB: 免疫印迹

ICC/IF: 细胞染色

IHC-P: 石蜡切片

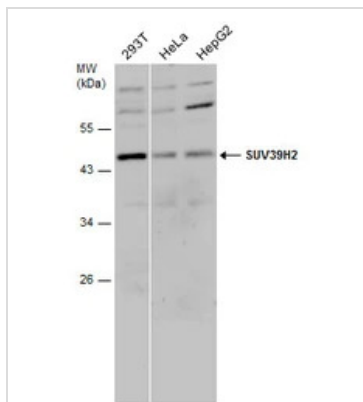
IHC-Fr: 冰冻切片

## 属性

形式	Liquid
存储溶液	PBS, 20% Glycerol
保存剂	0.025% ProClin 300
存放说明	Store as concentrated solution. Centrifuge briefly prior to opening vial. For short-term storage (1-2 weeks), store at 4°C. For long-term storage, aliquot and store at -20°C or below. Avoid multiple freeze-thaw cycles.
浓度	1.59 mg/ml (Please refer to the vial label for the specific concentration.)
偶联	Unconjugated
RRID	AB_2885914
注意事项	仅供实验室使用。不适用于人类或动物的任何临床，治疗或诊断用途。不适合动物或人类食用。

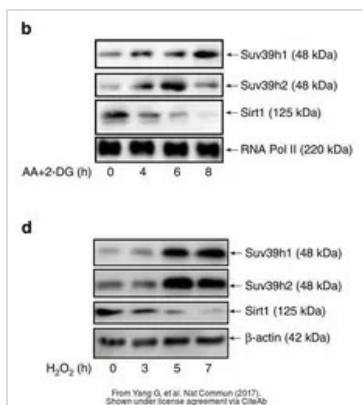
For full product information, images and publications, please visit our [website](#).

產品圖片



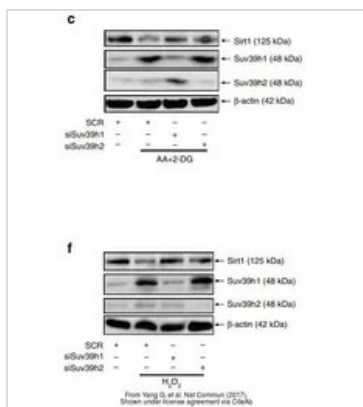
**GTX129167 WB Image**

Various whole cell extracts (30 µg) were separated by 10% SDS-PAGE, and the membrane was blotted with SUV39H2 antibody (GTX129167) diluted at 1:500.



**GTX129167 WB Image**

The data was published in the journal Nat Commun in 2017. [PMID: 28361889](https://pubmed.ncbi.nlm.nih.gov/28361889/)



**GTX129167 WB Image**

The data was published in the journal Nat Commun in 2017. [PMID: 28361889](https://pubmed.ncbi.nlm.nih.gov/28361889/)



For full product information, images and publications, please visit our [website](http://www.genetex.com).