

## Centrin 2 antibody

Cat. No. GTX129709

宿主	Rabbit
克隆	Polyclonal
同种型	IgG
实验应用	WB
种属反应	Human

## 实验应用

## 应用说明

\*最佳稀释倍数与浓度应由研究人员确认

Suggested dilution	Recommended dilution
WB	1:500-1:3000

以下为常规应用缩写的中文注解

WB: 免疫印迹

ICC/IF: 细胞染色

IHC-P: 石蜡切片

IHC-Fr: 冰冻切片

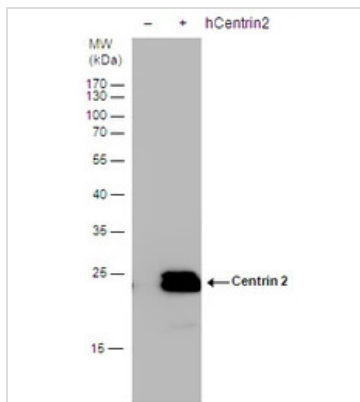
## 属性

形式	Liquid
存储溶液	PBS, 20% Glycerol
保存剂	0.025% ProClin 300
存放说明	Store as concentrated solution. Centrifuge briefly prior to opening vial. For short-term storage (1-2 weeks), store at 4°C. For long-term storage, aliquot and store at -20°C or below. Avoid multiple freeze-thaw cycles.
浓度	1 mg/ml (Please refer to the vial label for the specific concentration.)
偶联	Unconjugated
RRID	AB_2886074
注意事项	仅供实验室使用。不适用于人类或动物的任何临床，治疗或诊断用途。不适合动物或人类食用。



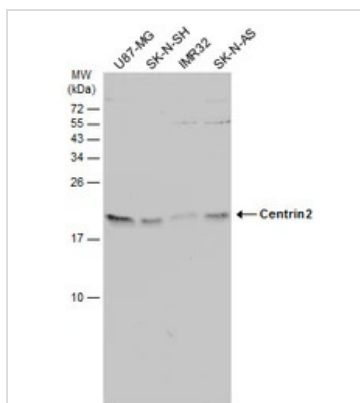
For full product information, images and publications, please visit our [website](#).

## 產品圖片



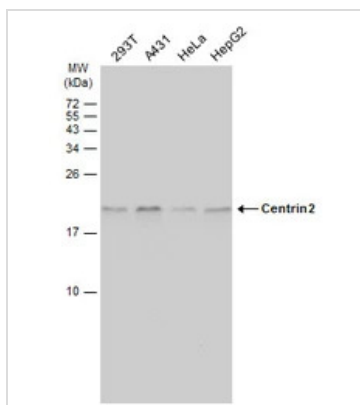
### GTx129709 WB Image

Centrin 2 antibody detects Centrin 2 protein by western blot analysis. Non-transfected (-) and CETN2-transfected (+, including Flag-tag) 293T whole cell extracts (30  $\mu$ g) were separated by 12% SDS-PAGE, and the membrane was blotted with Centrin 2 antibody (GTx129709) diluted by 1:20000.



### GTx129709 WB Image

Various whole cell extracts (30  $\mu$ g) were separated by 15% SDS-PAGE, and the membrane was blotted with Centrin 2 antibody (GTx129709) diluted at 1:500. The HRP-conjugated anti-rabbit IgG antibody (GTx213110-01) was used to detect the primary antibody.



### GTx129709 WB Image

Various whole cell extracts (30  $\mu$ g) were separated by 15% SDS-PAGE, and the membrane was blotted with Centrin 2 antibody (GTx129709) diluted at 1:500. The HRP-conjugated anti-rabbit IgG antibody (GTx213110-01) was used to detect the primary antibody.



For full product information, images and publications, please visit our [website](https://www.genetex.com).