

LGR5 antibody

Cat. No. GTX130204

宿主	Rabbit
克隆	Polyclonal
同种型	IgG
实验应用	WB, ICC/IF, IHC-P, IHC-Fr
种属反应	Human, Mouse

引用文献 (2)

产品说明

摘要

LGR5 antibody recognizes leucine-rich repeat-containing G-protein coupled receptor 5 (LGR5), a receptor protein with a predicted molecular weight of 100 kDa. LGR5, also known as GPR49 or GPR67, is a crucial determinant of the stem cell niche responsible for tissue regeneration in various organs such as the small intestine, colon, and hair follicle. In addition, LGR5 expression is found in cancer stem cells of various tumor types.

实验应用

应用说明

*最佳稀释倍数与浓度应由研究人员确认

Suggested dilution

Recommended dilution

WB	1:1000-1:10000
ICC/IF	Assay dependent
IHC-P	Assay dependent
IHC-Fr	Assay dependent

Note : As is commonly seen with membrane proteins, significant hydrophobicity can lead to aggregation following boiling of samples prior to SDS-PAGE and subsequent western blotting. We recommend to avoid boiling in this case.

Recommended citrate buffer (pH 6.0) heat-mediated antigen retrieval. The optimal antigen retrieval time is assay dependent. The average time is 2~3 mins. Longer than 5 minutes may destroy the epitope.

以下为常规应用缩写的中文注解

WB: 免疫印迹

ICC/IF: 细胞染色

IHC-P: 石蜡切片

IHC-Fr: 冰冻切片

属性

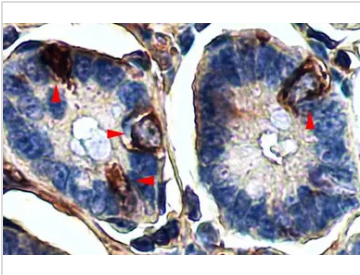
形式	Liquid
存储溶液	PBS, 20% Glycerol
保存剂	0.025% ProClin 300
存放说明	Store as concentrated solution. Centrifuge briefly prior to opening vial. For short-term storage (1-2 weeks), store at 4°C. For long-term storage, aliquot and store at -20°C or below. Avoid multiple freeze-thaw cycles.



For full product information, images and publications, please visit our [website](#).

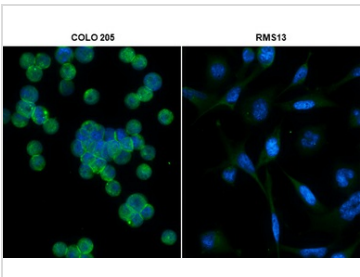
浓度	1.21 mg/ml (Please refer to the vial label for the specific concentration.)
偶联	Unconjugated
RRID	AB_2886205
注意事项	仅供实验室使用。不适用于人类或动物的任何临床、治疗或诊断用途。不适合动物或人类食用。

產品图片



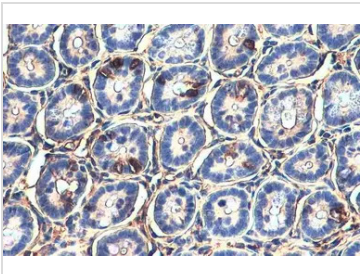
GTX130204 IHC-P Image

LGR5 antibody detects LGR5 protein at cell membrane and cytoplasm by immunohistochemical analysis.
 Sample: Paraffin-embedded mouse intestine.
 LGR5 stained by LGR5 antibody (GTX130204) diluted at 1:25.
 Antigen Retrieval: Citrate buffer, pH 6.0, 5 min



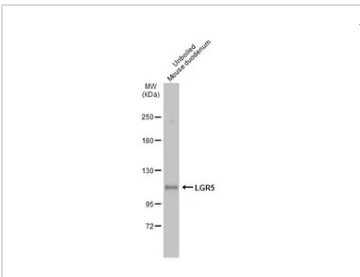
GTX130204 ICC/IF Image

LGR5 antibody detects LGR5 protein at cell membrane by immunofluorescent analysis.
 Sample: COLO 205 (high expression) and RMS13 (low expression) cells were fixed in 4% paraformaldehyde at RT for 15 min.
 Green: LGR5 stained by LGR5 antibody (GTX130204) diluted at 1:200.
 Blue: Fluoroshield with DAPI (GTX30920).



GTX130204 IHC-P Image

LGR5 antibody detects LGR5 protein at cell membrane and cytoplasm by immunohistochemical analysis.
 Sample: Paraffin-embedded mouse intestine.
 LGR5 stained by LGR5 antibody (GTX130204) diluted at 1:25.
 Antigen Retrieval: Citrate buffer, pH 6.0, 3 min



GTX130204 WB Image

Unboiled mouse tissue extract (50 µg) was separated by 5% SDS-PAGE, and the membrane was blotted with LGR5 antibody (GTX130204) diluted at 1:500. The HRP-conjugated anti-rabbit IgG antibody (GTX213110-01) was used to detect the primary antibody, and the signal was developed with Trident ECL plus-Enhanced.



For full product information, images and publications, please visit our [website](#).