

Vamp2 antibody

Cat. No. GTX132130

宿主	Rabbit
克隆	Polyclonal
同种型	IgG
实验应用	WB, IHC-Wm, IHC
种属反应	Zebrafish

引用文献 (3)

★★★★★ 产品评论 (1)

实验应用

应用说明

*最佳稀释倍数与浓度应由研究人员确认

Suggested dilution	Recommended dilution
WB	1:500-1:3000
IHC-Wm	Assay dependent
IHC	Assay dependent

以下为常规应用缩写的中文注解

WB: 免疫印迹

ICC/IF: 细胞染色

IHC-P: 石蜡切片

IHC-Fr: 冰冻切片

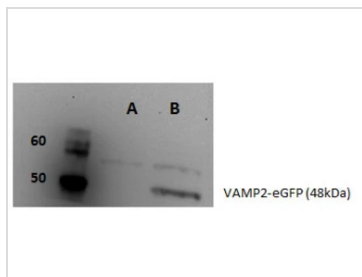
属性

形式	Liquid
存储溶液	0.1M Tris, 0.1M Glycine, 20% Glycerol
保存剂	0.01% Thimerosal
存放说明	Store as concentrated solution. Centrifuge briefly prior to opening vial. For short-term storage (1-2 weeks), store at 4°C. For long-term storage, aliquot and store at -20°C or below. Avoid multiple freeze-thaw cycles.
浓度	1.03 mg/ml (Please refer to the vial label for the specific concentration.)
偶联	Unconjugated
RRID	AB_2886574
注意事项	仅供实验室使用。不适用于人类或动物的任何临床, 治疗或诊断用途。不适合动物或人类食用。



For full product information, images and publications, please visit our [website](#).

產品圖片

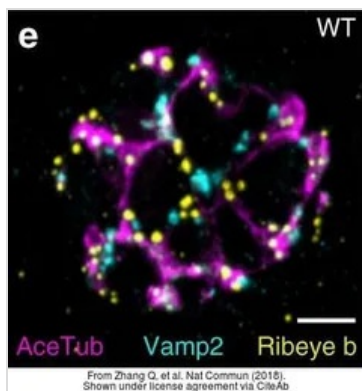
**GTX132130 WB Image**

Vamp2 antibody detects Vamp2 protein by Western blot analysis.

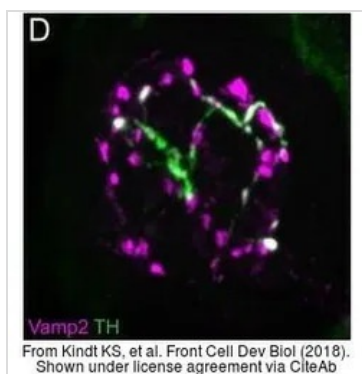
A. Whole cell lysate from untransfected HEK

B. Whole cell lysate from HEK transfected with vamp2-eGFP.

Vamp2 antibody (GTX132130) dilution: 1:1000.

**GTX132130 IHC-Wm Image**

The data was published in the journal Nat Commun in 2018. [PMID: 29643351](https://pubmed.ncbi.nlm.nih.gov/29643351/)

**GTX132130 IHC Image**

The data was published in the journal Front Cell Dev Biol in 2018. [PMID: 30258843](https://pubmed.ncbi.nlm.nih.gov/30258843/)



For full product information, images and publications, please visit our [website](https://www.genetex.com).