

## NeuN antibody

Cat. No. GTX132974

宿主	Rabbit
克隆	Polyclonal
同种型	IgG
实验应用	WB, ICC/IF, IHC-P, IHC-Fr
种属反应	Human, Mouse, Rat, Fish

引用文献 ( 24 )

## 实验应用

## 应用说明

\*最佳稀释倍数与浓度应由研究人员确认

Suggested dilution	Recommended dilution
WB	1:500-1:3000
ICC/IF	1:100-1:1000
IHC-P	1:100-1:1000
IHC-Fr	1:100-1:1000

以下为常规应用缩写的中文注解

WB: 免疫印迹

ICC/IF: 细胞染色

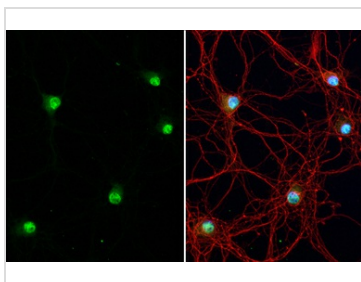
IHC-P: 石蜡切片

IHC-Fr: 冰冻切片

## 属性

形式	Liquid
存储溶液	PBS, 20% Glycerol
保存剂	0.025% ProClin 300
存放说明	Store as concentrated solution. Centrifuge briefly prior to opening vial. For short-term storage (1-2 weeks), store at 4°C. For long-term storage, aliquot and store at -20°C or below. Avoid multiple freeze-thaw cycles.
浓度	1.47 mg/ml (Please refer to the vial label for the specific concentration.)
偶联	Unconjugated
RRID	AB_2886793
注意事项	仅供实验室使用。不适用于人类或动物的任何临床、治疗或诊断用途。不适合动物或人类食用。

For full product information, images and publications, please visit our [website](#).

**產品圖片**

**GTx132974 ICC/IF Image**

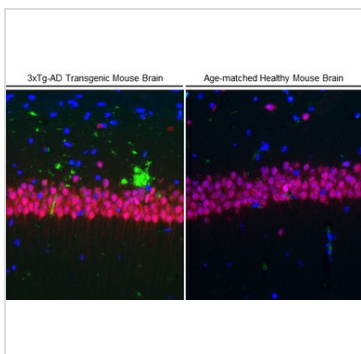
NeuN antibody detects NeuN protein at nucleus by immunofluorescent analysis.

Sample: DIV9 rat E18 primary hippocampal neuron cells were fixed in 4% paraformaldehyde at RT for 15 min.

Green: NeuN stained by NeuN antibody (GTx132974) diluted at 1:250.

Red: Tau, an axon marker, stained by Tau antibody [GT287] (GTx634809) diluted at 1:500.

Blue: Fluoroshield with DAPI (GTx30920).


**GTx132974 IHC-P Image**

NeuN antibody detects NeuN protein at nucleus by immunohistochemical analysis.

Sample: Paraffin-embedded 3xTg-AD transgenic mouse brain (left) and healthy mouse brain (right).

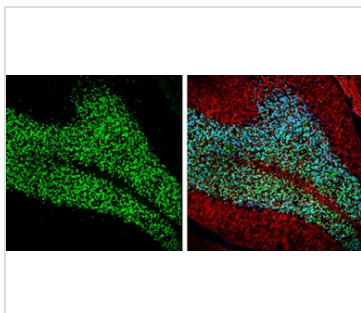
Red: NeuN stained by NeuN antibody (GTx132974) diluted at 1:250.

Green: Beta amyloid (1-42) stained by Beta amyloid (1-42) antibody – Conformation Specific antibody [GT622] (GTx635160) diluted at 1:1000.

Blue: Fluoroshield with DAPI (GTx30920).

Antigen Retrieval: Citrate buffer, pH 6.0, 15 min

This image was provided courtesy of a customer review.


**GTx132974 IHC-Fr Image**

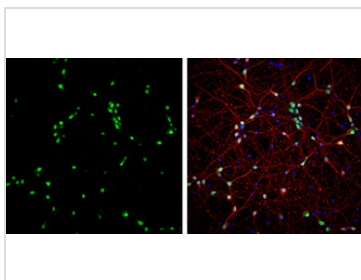
NeuN antibody detects NeuN protein expression by immunohistochemical analysis.

Sample: Frozen-sectioned adult mouse cerebellum.

Green: NeuN protein stained by NeuN antibody (GTx132974) diluted at 1:250.

Red: beta Tubulin 3/ TUJ1, stained by beta Tubulin 3/ TUJ1 antibody [GT11710] (GTx631836) diluted at 1:500.

Blue: Fluoroshield with DAPI (GTx30920).


**GTx132974 ICC/IF Image**

NeuN antibody detects NeuN protein at nucleus by immunofluorescent analysis.

Sample: DIV9 rat E18 primary cortical neurons were fixed in 4% paraformaldehyde at RT for 15 min.

Green: NeuN protein stained by NeuN antibody (GTx132974) diluted at 1:1000.

Red: beta Tubulin 3/ Tuj1, stained by beta Tubulin 3/ Tuj1 antibody [GT886] (GTx631830) diluted at 1:500.

Blue: Fluoroshield with DAPI (GTx30920).



For full product information, images and publications, please visit our [website](#).