

## CaMKII beta antibody

Cat. No. GTX133072

|      |                           |
|------|---------------------------|
| 宿主   | Rabbit                    |
| 克隆   | Polyclonal                |
| 同种型  | IgG                       |
| 实验应用 | WB, ICC/IF, IHC-P, IHC-Fr |
| 种属反应 | Human, Mouse, Rat         |

引用文献 ( 3 )

## 实验应用

## 应用说明

\*最佳稀释倍数与浓度应由研究人员确认

| Suggested dilution | Recommended dilution |
|--------------------|----------------------|
| WB                 | 1:500-1:3000         |
| ICC/IF             | 1:100-1:1000         |
| IHC-P              | 1:100-1:1000         |
| IHC-Fr             | 1:100-1:1000         |

以下为常规应用缩写的中文注解

WB: 免疫印迹

ICC/IF: 细胞染色

IHC-P: 石蜡切片

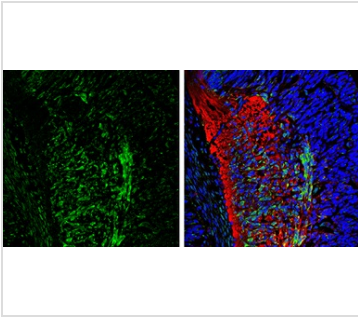
IHC-Fr: 冰冻切片

## 属性

|      |  |
|------|--|
| 形式   | Liquid   |
| 存储溶液 | PBS, 1% BSA, 20% Glycerol  |
| 保存剂  | 0.025% ProClin 300   |
| 存放说明 | Store as concentrated solution. Centrifuge briefly prior to opening vial. For short-term storage (1-2 weeks), store at 4°C. For long-term storage, aliquot and store at -20°C or below. Avoid multiple freeze-thaw cycles. |
| 浓度   | 0.24 mg/ml (Please refer to the vial label for the specific concentration.)  |
| 偶联   | Unconjugated   |
| RRID | AB_2886816   |
| 注意事项 | 仅供实验室使用。不适用于人类或动物的任何临床、治疗或诊断用途。不适合动物或人类食用。   |

For full product information, images and publications, please visit our [website](#).

## 產品圖片



### GTX133072 IHC-Fr Image

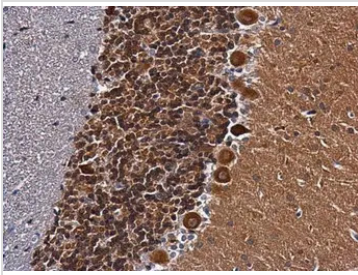
CaMKII beta antibody detects CaMKII beta protein expression by immunohistochemical analysis.

Sample: Frozen sectioned E13.5 Rat brain.

Green: CaMKII beta protein stained by CaMKII beta antibody (GTX133072) diluted at 1:250.

Red: beta Tubulin 3/ TUJ1, a mature neuron marker, stained by beta Tubulin 3/ TUJ1 antibody [GT11710] (GTX631836) diluted at 1:500.

Blue: Fluoroshield with DAPI (GTX30920).



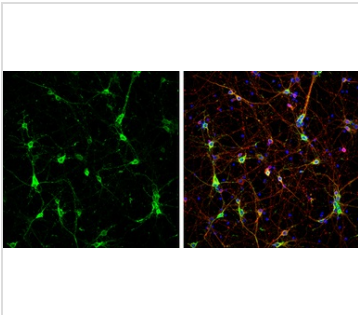
### GTX133072 IHC-P Image

CaMKII beta antibody detects CAMK2B protein at cytoplasm in rat brain by immunohistochemical analysis.

Sample: Paraffin-embedded rat brain.

CaMKII beta antibody (GTX133072) diluted at 1:500.

Antigen Retrieval: Citrate buffer, pH 6.0, 15 min



### GTX133072 ICC/IF Image

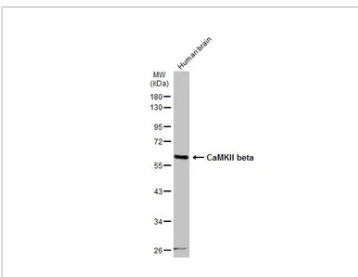
CaMKII beta antibody detects CaMKII beta protein at cytoplasm by immunofluorescent analysis.

Sample: DIV9 rat E18 primary cortical neurons were fixed in 4% paraformaldehyde at RT for 15 min.

Green: CaMKII beta protein stained by CaMKII beta antibody (GTX133072) diluted at 1:500.

Red: beta Tubulin 3/ Tuj1, stained by beta Tubulin 3/ Tuj1 antibody [GT11710] (GTX631836) diluted at 1:500.

Blue: Fluoroshield with DAPI (GTX30920).



### GTX133072 WB Image

Human tissue extract (30 µg) was separated by 10% SDS-PAGE, and the membrane was blotted with CaMKII beta antibody (GTX133072) diluted at 1:500. The HRP-conjugated anti-rabbit IgG antibody (GTX213110-01) was used to detect the primary antibody.



For full product information, images and publications, please visit our [website](https://www.genetex.com).