

PLCB2 antibody

Cat. No. GTX133765

宿主	Rabbit
克隆	Polyclonal
同种型	IgG
实验应用	WB, ICC/IF, IHC-P, IHC-Fr
种属反应	Human, Mouse

引用文献 (1)

实验应用

应用说明

*最佳稀释倍数与浓度应由研究人员确认

Suggested dilution	Recommended dilution
WB	1:500-1:3000
ICC/IF	1:100-1:1000
IHC-P	1:100-1:1000
IHC-Fr	Assay dependent

以下为常规应用缩写的中文注解

WB: 免疫印迹

ICC/IF: 细胞染色

IHC-P: 石蜡切片

IHC-Fr: 冰冻切片

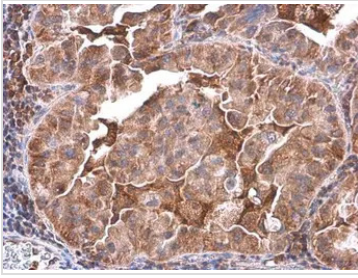
属性

形式	Liquid
存储溶液	PBS, 20% Glycerol
保存剂	0.025% ProClin 300
存放说明	Store as concentrated solution. Centrifuge briefly prior to opening vial. For short-term storage (1-2 weeks), store at 4°C. For long-term storage, aliquot and store at -20°C or below. Avoid multiple freeze-thaw cycles.
浓度	0.71 mg/ml (Please refer to the vial label for the specific concentration.)
偶联	Unconjugated
RRID	AB_2887097
注意事项	仅供实验室使用。不适用于人类或动物的任何临床, 治疗或诊断用途。不适合动物或人类食用。



For full product information, images and publications, please visit our [website](#).

產品圖片

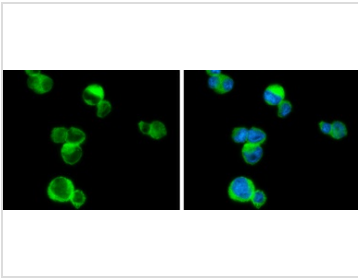
**GTX133765 IHC-P Image**

PLCB2 antibody detects PLCB2 protein at cytoplasm by immunohistochemical analysis.

Sample: Paraffin-embedded human lung cancer.

PLCB2 stained by PLCB2 antibody (GTX133765) diluted at 1:500.

Antigen Retrieval: Citrate buffer, pH 6.0, 15 min

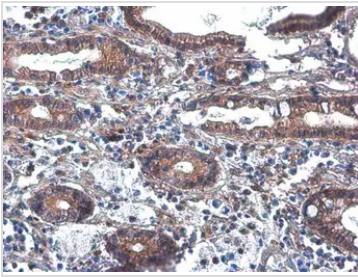
**GTX133765 ICC/IF Image**

PLCB2 antibody detects PLCB2 protein at cytoplasm by immunofluorescent analysis.

Sample: THP-1 cells were fixed in 4% paraformaldehyde at RT for 15 min.

Green: PLCB2 stained by PLCB2 antibody (GTX133765) diluted at 1:500.

Blue: Fluoroshield with DAPI (GTX30920).

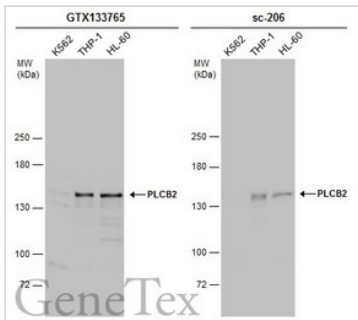
**GTX133765 IHC-P Image**

PLCB2 antibody detects PLCB2 protein at cytoplasm by immunohistochemical analysis.

Sample: Paraffin-embedded human colon cancer.

PLCB2 stained by PLCB2 antibody (GTX133765) diluted at 1:500.

Antigen Retrieval: Citrate buffer, pH 6.0, 15 min

**GTX133765 WB Image**

Various whole cell extracts (30 µg) were separated by 5% SDS-PAGE, and the membranes were blotted with PLCB2 antibody (GTX133765) diluted at 1:1000 and competitor's antibody (sc-206) diluted at 1:100. The HRP-conjugated anti-rabbit IgG antibody (GTX213110-01) was used to detect the primary antibody.

*The competitor is not affiliated with GeneTex and does not endorse this product.



For full product information, images and publications, please visit our [website](#).