

SARS-CoV-2 (COVID-19) Spike (ECD) Protein, B.1.1.7 / Alpha variant, His tag (active)

Cat. No. GTX136059-pro

实验应用 Binding Assay, WB, ELISA, Sandwich ELISA

Speciess SARS Coronavirus 2

Package

100 µg

属性

形式 Liquid

存储溶液 PBS

保存剂 No preservative

存放说明 Store as concentrated solution. Centrifuge briefly prior to opening vial. Aliquot and store at -20°C or below. Avoid multiple freeze-thaw cycles. For long-term storage after reconstitution, aliquot and store at -70°C or below. Do not vortex.

浓度 0.3 mg/ml (Please refer to the vial label for the specific concentration.)

Region/Sequence

SARS-CoV-2 Spike of QHD43416.1 (1-1213 a.a, extracellular domain) with UK variant (501Y.V1 / B.1.1.7) mutations (deletion 69-70, deletion 144, N501Y, A570D, D614G, P681H, T716I, S982A, D1118H), S1-S2 cleavage site mutations (682-685GSAS), 6 stabilizing (HexaPro) mutations (F817P, A892P, A899P, A942P, K986P, V987P), and T4 trimerization domain as well as a C-terminal His tag.

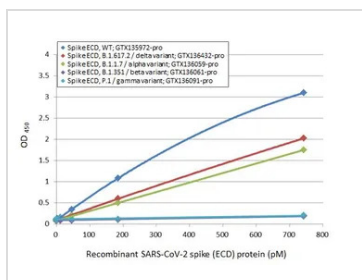
表达系统 HEK293 cells

纯度 >95%

偶联 Unconjugated

注意事项 仅供实验室使用。不适用于人类或动物的任何临床、治疗或诊断用途。不适合动物或人类食用。

产品图片



GTX136059-pro ELISA Image

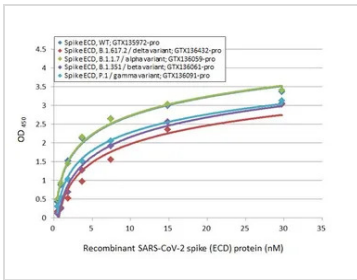
Sandwich ELISA detection of recombinant Spike ECD protein(s) derived from different strains of SARS-CoV-2 virus (ie., Wild type; B.1.1.7 alpha variant; B.1.351 beta variant; P.1 gamma variant; B.1.617.2 delta variant) using antibodies as below.

Capture: SARS-CoV-2 (COVID-19) Spike RBD antibody [HL1014] (GTX635807) (5 µg/mL)

Detection: SARS-CoV-2 (COVID-19) Spike RBD antibody [HL1003] (HRP) (GTX635792-01) (1 µg/mL)

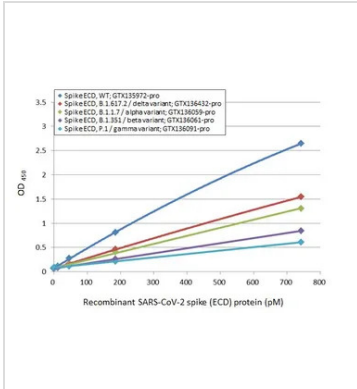


For full product information, images and publications, please visit our [website](https://www.genetex.com).



GTx136059-pro ELISA Image

Indirect ELISA analysis performed by coating plate with recombinant Spike ECD protein(s) derived from different strains of SARS-CoV-2 virus (ie., Wild type; B.1.1.7 alpha variant; B.1.351 beta variant; P.1 gamma variant; B.1.617.2 delta variant) (29.71-0.46 nM). Coated protein was probed with SARS-CoV-2 (COVID-19) Spike RBD antibody [HL1002] (GTx635791) (1 µg/mL). Goat anti-rabbit IgG antibody (HRP) (GTx213110-01) (1:10000) was used to detect bound primary antibody.



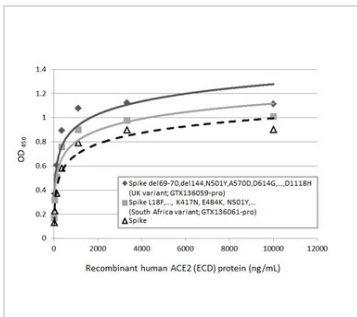
GTx136059-pro ELISA Image

Sandwich ELISA detection of recombinant Spike ECD protein(s) derived from different strains of SARS-CoV-2 virus (ie., Wild type; B.1.617.2 delta variant; B.1.1.7 alpha variant; B.1.351 beta variant; P.1 gamma variant) using antibodies as below.

Capture: SARS-CoV-2 (COVID-19) Spike RBD antibody [HL1014] (GTx635807) (5 µg/mL)

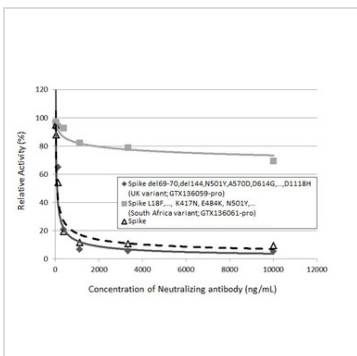
Detection: HRP-conjugated SARS-CoV-2 (COVID-19) Spike RBD antibody [HL1002] (GTx635791) (1 µg/mL)

Please notice that GTx635791 needs to be conjugated to HRP to function as the detection antibody when paired with GTx635807. Please contact us for custom HRP-conjugated antibody.



GTx136059-pro Binding Assay Image

Functional ELISA analysis of immobilized recombinant SARS-CoV-2 (COVID-19) Spike (del69-70,del144,N501Y,A570D,D614G,...,D1118H) (ECD) Protein, His tag (active) (UK variant) (GTx136059-pro), SARS-CoV-2 (COVID-19) Spike (L18F,..., K417N, E484K, N501Y,...)(ECD) Protein, His tag (active) (South Africa variant) (GTx136061-pro) and SARS-CoV-2 (COVID-19) Spike Protein (Wild type) (coated at 2 µg/mL) binding to soluble recombinant Human ACE2 (ECD) protein, mouse IgG Fc tag (active) (GTx135683-pro) (14-10000 ng/mL). Bound protein was detected by Goat Anti-Mouse IgG antibody (HRP) (GTx213111-01) (1:10000).



GTx136059-pro Binding Assay Image

Inhibition analysis of immobilized recombinant SARS-CoV-2 (COVID-19) Spike (del69-70,del144,N501Y,A570D,D614G,...,D1118H) (ECD) Protein, His tag (active) (UK variant) (GTx136059-pro), SARS-CoV-2 (COVID-19) Spike (L18F,..., K417N, E484K, N501Y,...)(ECD) Protein, His tag (active) (South Africa variant) (GTx136061-pro) and SARS-CoV-2 (COVID-19) Spike Protein (coated at 2 µg/mL) binding to soluble recombinant Human ACE2 (ECD) protein, mouse IgG Fc tag (active) (GTx135683-pro) (1000 ng/mL). ACE2 binding was inhibited by increasing concentrations of SARS-CoV-2 (COVID-19) Spike RBD antibody [HL1004] (GTx635793) (14-10000 ng/mL). Bound ACE2 was detected by Goat Anti-Mouse IgG antibody (HRP) (GTx213111-01) (1:10000).



For full product information, images and publications, please visit our [website](https://www.genetex.com).