

Enterovirus D68 VP1 protein, His tag

Cat. No. GTX138561-pro

实验应用 WB, Lateral Flow

Speciess Enterovirus D68

Package

100 µg

产品说明

摘要

Viral envelope protein 1 (VP1) of Enterovirus D68 (EV-D68) is one of four structural proteins required to assemble the icosahedral viral capsid. VP1 is responsible for host cell attachment and viral entry into host cells. In addition, since it is located on the surface of the virion and presents serotype-specific neutralization epitopes, the gene coding for VP1 is important for serotype identification. This E. coli-expressed recombinant EV-D68 VP1 protein is purified using its N-terminal His tag.

实验应用

应用说明

For Lateral Flow, we would recommend the following pairs :

Capture: GTX633770, Detection: GTX637898 or Capture: GTX637898, Detection: GTX633770

属性

形式 Liquid

存储溶液 PBS, 0.1% SDS

保存剂 No preservative

存放说明 Store as concentrated solution. Centrifuge briefly prior to opening vial. Aliquot and store at -20°C or below. Avoid multiple freeze-thaw cycles. For long-term storage after reconstitution, aliquot and store at -70°C or below. Do not vortex.

浓度 1 mg/ml (Please refer to the vial label for the specific concentration.)

Region/Sequence N-terminal His tagged full-length Enterovirus D68 VP1 protein (553-861aa of ABL61317.1)

表达系统 E. Coli

纯度 >95%

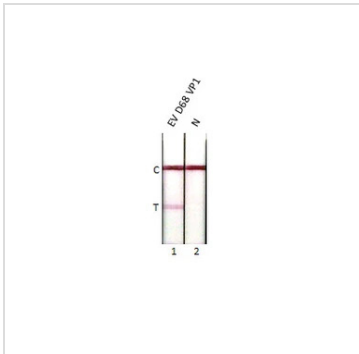
偶联 Unconjugated

注意事项 仅供实验室使用。不适用于人类或动物的任何临床, 治疗或诊断用途。不适合动物或人类食用。



For full product information, images and publications, please visit our [website](#).

Date 2025 / 07 / 02 Page 1 of 2

產品圖片

GTX138561-pro Lateral Flow Image

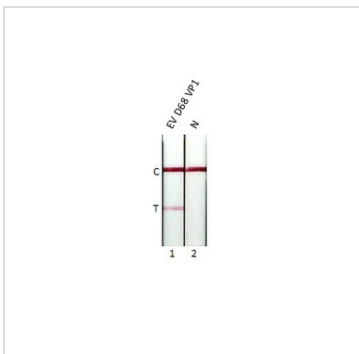
Detection of enterovirus D68 VP1 protein by lateral flow assay using the monoclonal antibody pair.

Capture: Enterovirus D68 VP1 antibody (GTX633770 [GT1843])

Detection: Enterovirus D68 VP1 antibody (GTX637898 [HL1997])

Samples (80 ng) :

1. Enterovirus D68 VP1 protein (GTX138561-pro)
2. Lysis buffer


GTX138561-pro Lateral Flow Image

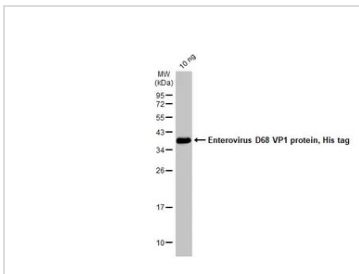
Detection of enterovirus D68 VP1 protein by lateral flow assay using the monoclonal antibody pair.

Capture: Enterovirus D68 VP1 antibody (GTX637898 [HL1997])

Detection: Enterovirus D68 VP1 antibody (GTX633770 [GT1843])

Samples (80 ng) :

1. Enterovirus D68 VP1 protein (GTX138561-pro)
2. Lysis buffer


GTX138561-pro WB Image

Enterovirus D68 VP1 protein, His tag (10 ng, GTX138561-pro) was separated by 12% SDS-PAGE, and the membrane was blotted with Enterovirus D68 VP1 antibody [HL1997] (GTX637898) diluted at 1:5000. The HRP-conjugated anti-rabbit IgG antibody (GTX213110-01) was used to detect the primary antibody.



For full product information, images and publications, please visit our [website](http://www.genetex.com).