

IL4 antibody [E10021]

Cat. No. GTX15758

宿主	Mouse
克隆	Monoclonal
同种型	IgG1
实验应用	WB, ELISA
种属反应	Human

实验应用

应用说明

*最佳稀释倍数与浓度应由研究人员确认

Suggested dilution	Recommended dilution
WB	1:1000
ELISA	0.001-20 µg/mL

以下为常规应用缩写的中文注解

WB: 免疫印迹

ICC/IF: 细胞染色

IHC-P: 石蜡切片

IHC-Fr: 冰冻切片

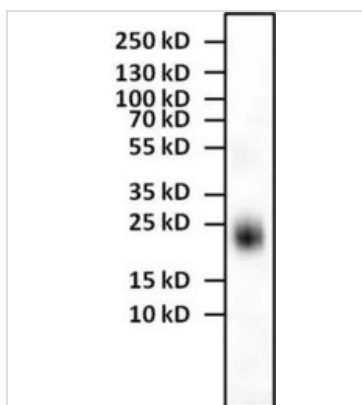
属性

形式	Liquid
存储溶液	PBS, 5% Trehalose
保存剂	No preservatives
存放说明	Store as concentrated solution. Centrifuge briefly prior to opening vial. Store at 4°C.
浓度	Batch dependent (Please refer to the vial label for the specific concentration.)
偶联	Unconjugated
注意事项	仅供实验室使用。不适用于人类或动物的任何临床, 治疗或诊断用途。不适合动物或人类食用。



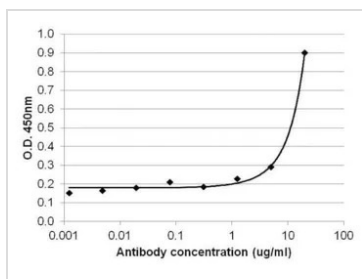
For full product information, images and publications, please visit our [website](#).

產品圖片

**GTX15758 WB Image**

WB analysis of 1 μ g of human recombinant IL-4 protein in non-reducing sample buffer using GTX15758 IL4 antibody [E10021].

Dilution : 1:1000

**GTX15758 ELISA Image**

ELISA analysis of 1 μ g/mL human IL-4 recombinant protein diluted in carbonate/bicarbonate buffer) using serial diluted GTX15758 IL4 antibody [E10021].



For full product information, images and publications, please visit our [website](#).