

Diablo antibody [SMAC 17 1-87]

Cat. No. GTX15827

宿主	Mouse
克隆	Monoclonal
同种型	IgG1
实验应用	WB, ICC/IF, IHC-P, IP
种属反应	Human, Mouse, Rat

实验应用

应用说明

*最佳稀释倍数与浓度应由研究人员确认

Suggested dilution	Recommended dilution
WB	Assay dependent
ICC/IF	1:20-1:200
IHC-P	1:20-1:200
IP	Assay dependent

以下为常规应用缩写的中文注解

WB: 免疫印迹

ICC/IF: 细胞染色

IHC-P: 石蜡切片

IHC-Fr: 冰冻切片

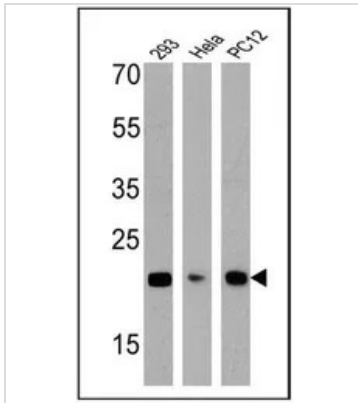
属性

形式	Liquid
存储溶液	PBS, 0.1% BSA
保存剂	0.05% Sodium azide
存放说明	Store as concentrated solution. Centrifuge briefly prior to opening vial. For short-term storage (1-2 weeks), store at 4°C. For long-term storage, aliquot and store at -20°C or below. Avoid multiple freeze-thaw cycles.
浓度	1 mg/ml (Please refer to the vial label for the specific concentration.)
偶联	Unconjugated
注意事项	仅供实验室使用。不适用于人类或动物的任何临床、治疗或诊断用途。不适合动物或人类食用。



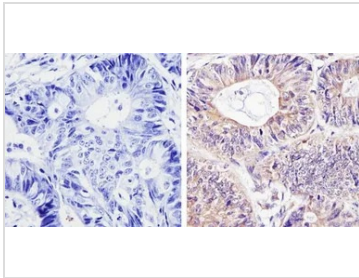
For full product information, images and publications, please visit our [website](#).

產品圖片

**GTX15827 WB Image**

WB analysis of 25 ug of 293 (Lane 1), HeLa (Lane 2), and PC12 cell lysates (Lane 3) using GTX15827 Diablo antibody [SMAC 17 1-87].

Dilution : 1:1000

**GTX15827 IHC-P Image**

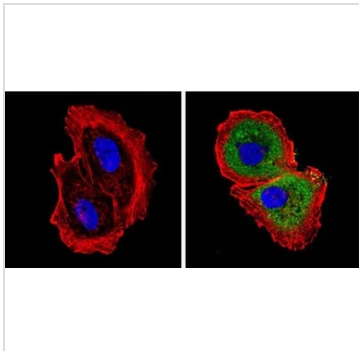
IHC-P analysis of human colon carcinoma tissue using GTX15827 Diablo antibody [SMAC 17 1-87].

Right : Primary antibody

Left : Negative control without primary antibody

Antigen retrieval : 10mM sodium citrate (pH 6.0), microwaved for 8-15 min

Dilution : 1:100

**GTX15827 ICC/IF Image**

ICC/IF analysis of MCF-7 cells using GTX15827 Diablo antibody [SMAC 17 1-87]. Cells were probed without (left) or with(right) an antibody.

Green : Primary antibody

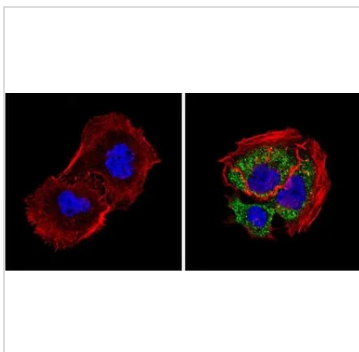
Blue : Nuclei

Red : Actin

Fixation : Formalin

Permeabilization : 0.1% Triton X-100 in TBS for 5-10 minute

Dilution : 1:100 incubated overnight at 4 °C

**GTX15827 ICC/IF Image**

ICC/IF analysis of A431 cells using GTX15827 Diablo antibody [SMAC 17 1-87]. Cells were probed without (left) or with(right) an antibody.

Green : Primary antibody

Blue : Nuclei

Red : Actin

Fixation : Formalin

Permeabilization : 0.1% Triton X-100 in TBS for 5-10 minute

Dilution : 1:100 incubated overnight at 4 °C



For full product information, images and publications, please visit our [website](#).