

VAV2 antibody

Cat. No. GTX16135

宿主	Sheep
克隆	Polyclonal
同种型	IgG
实验应用	WB, IP
种属反应	Human

实验应用

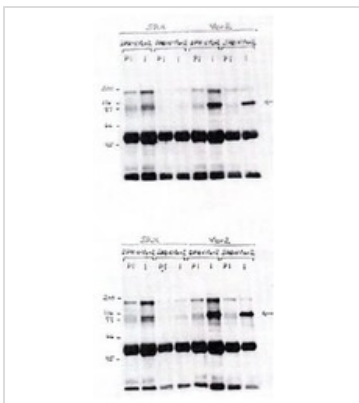
应用说明

IP: Use at an assay dependent dilution. WB: Use at a dilution of 1/5000. Predicted molecular weight: 101 kDa. Optimal dilutions/concentrations should be determined by the end user.

属性

形式	Liquid
存储溶液	PBS
保存剂	0.08% Sodium azide
存放说明	Store as concentrated solution. Centrifuge briefly prior to opening vial. For short-term storage (1-2 weeks), store at 4°C. For long-term storage, aliquot and store at -20°C or below. Avoid multiple freeze-thaw cycles.
浓度	Batch dependent (Please refer to the vial label for the specific concentration.)
偶联	Unconjugated
注意事项	仅供实验室使用。不适用于人类或动物的任何临床，治疗或诊断用途。不适合动物或人类食用。

产品图片



GTX16135 WB Image

HEK293 cells were transfected with either empty expression vector (pSR) or pSRa-Vav2 driving expression of human Vav2. Indicated antibodies (SHD or DPH) were used to immunoprecipitate Vav2 from 300ug protein lysates. Immunoprecipitated activity was identified by immunoblot of complexes using either DPH (upper gel) or SHD (lower gel) antisera at (1:10000). Immunoprecipitation of Endogenous/Exogenous Vav2 from HEK 293 (75 u g lysate per lane). Top gel - i.p. Ab: DPH or SHD preimmune serum (2.5 l/300 g lysate). DPH or SHD anti Vav2 antiserum (2.5 l/300 g lysate). Western Blot Ab: DPH anti Vav2 1:10000. Bottom Gel - i.p. Ab DPH or SHD preimmune sera (2.5 l/300 g lysate). DPH or SHD anti Vav2 antisera (2.5 l/300 g lysate). Western blot Ab - SHD anti Vav2 antibody 1:10000.



For full product information, images and publications, please visit our [website](#).