

CHX10 antibody

Cat. No. GTX16141

宿主	Sheep
克隆	Polyclonal
同种型	IgG
实验应用	WB
种属反应	Human, Mouse, Rat, Bovine

实验应用

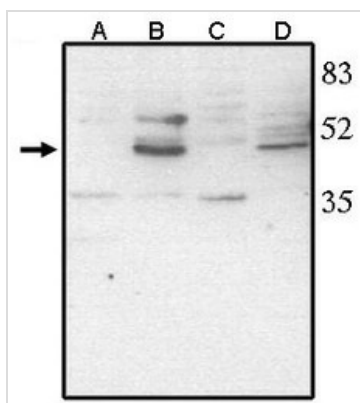
应用说明

WB: Use at a concentration of 0.5 - 1 µg/ml. Detects a band of approximately 46 kDa in mouse and rat retinal tissue lysates. Optimal dilutions/concentrations should be determined by the end user.

属性

形式	Liquid
存储溶液	PBS
保存剂	0.08% Sodium azide
存放说明	Store as concentrated solution. Centrifuge briefly prior to opening vial. For short-term storage (1-2 weeks), store at 4°C. For long-term storage, aliquot and store at -20°C or below. Avoid multiple freeze-thaw cycles.
浓度	1 mg/ml (Please refer to the vial label for the specific concentration.)
偶联	Unconjugated
注意事项	仅供实验室使用。不适用于人类或动物的任何临床、治疗或诊断用途。不适合动物或人类食用。

产品图片



GTX16141 WB Image

Western blot analysis using anti-Chk10 (CT) antibody at 1 µg/ml on rat liver (A), retina tissue lysate (B), mouse liver (C) and retina (D) tissue lysate.



For full product information, images and publications, please visit our [website](https://www.genetex.com).