

Kv9.3 antibody

Cat. No. GTX16709

宿主	Rabbit
克隆	Polyclonal
同种型	IgG
实验应用	WB, IHC-Fr, IHC (Free Floating)
种属反应	Human, Mouse, Rat

实验应用

应用说明

*最佳稀释倍数与浓度应由研究人员确认

Suggested dilution	Recommended dilution
WB	Assay dependent
IHC-Fr	Assay dependent
IHC (Free Floating)	Assay dependent

以下为常规应用缩写的中文注解

WB: 免疫印迹

ICC/IF: 细胞染色

IHC-P: 石蜡切片

IHC-Fr: 冰冻切片

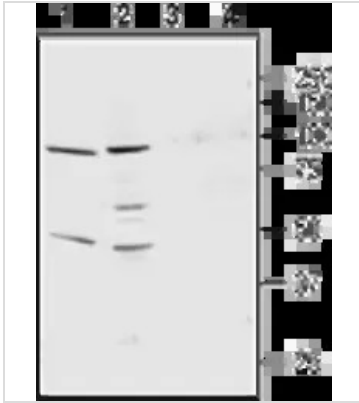
属性

形式	Liquid
存储溶液	PBS, 1% BSA
保存剂	0.05% Sodium azide
存放说明	Store as concentrated solution. Centrifuge briefly prior to opening vial. For short-term storage (1-2 weeks), store at 4°C. For long-term storage, aliquot and store at -20°C or below. Avoid multiple freeze-thaw cycles.
浓度	0.8 mg/ml (Please refer to the vial label for the specific concentration.)
偶联	Unconjugated
注意事项	仅供实验室使用。不适用于人类或动物的任何临床, 治疗或诊断用途。不适合动物或人类食用。



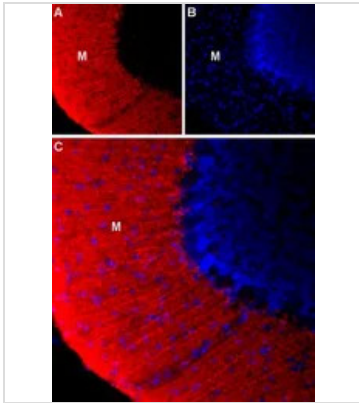
For full product information, images and publications, please visit our [website](#).

產品圖片

**GTX16709 IHC (Free Floating) Image**

WB analysis of rat lung membranes (lanes 1 and 3) and mouse heart membranes (lanes 2 and 4) lysates using GTX16709 Kv9.3 antibody preincubated with or without immunogen peptide.

Dilution : 1:200

**GTX16709 WB Image**

IHC-Frfl (free floating) analysis of rat cerebellum tissue using GTX16709 Kv9.3 antibody.

Panel A : KV9.3 staining (red) is expressed in the molecular layer (M).

Panel B : DAPI counterstain (blue) displays the layout of cerebellar layers.

Panel C : Merge of A and B demonstrates restriction of KV9.3 expression to the molecular layer.

Dilution : 1:200



For full product information, images and publications, please visit our [website](#).