

## M13 antibody [E1] (Biotin)

Cat. No. GTX17269

宿主	Mouse
克隆	Monoclonal
同种型	IgG2a
实验应用	WB, FCM, ELISA, IHC
种属反应	Bacteriophage M13

## 实验应用

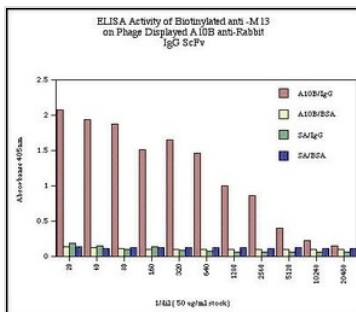
## 应用说明

For ELISA: Use at an assay dependent dilution. For FACS: Use 1 µg/10<sup>6</sup> cells. For WB: Use at a concentration of 1-5 µg/ml. Optimal dilutions/concentrations should be determined by the researcher.

## 属性

形式	Liquid
存储溶液	PBS
保存剂	0.08% Sodium azide
存放说明	Store as concentrated solution. Centrifuge briefly prior to opening vial. For short-term storage (1-2 weeks), store at 4°C. For long-term storage, aliquot and store at -20°C or below. Avoid multiple freeze-thaw cycles.
浓度	1 mg/ml (Please refer to the vial label for the specific concentration.)
偶联	Biotin
注意事项	仅供实验室使用。不适用于人类或动物的任何临床，治疗或诊断用途。不适合动物或人类食用。

## 产品图片

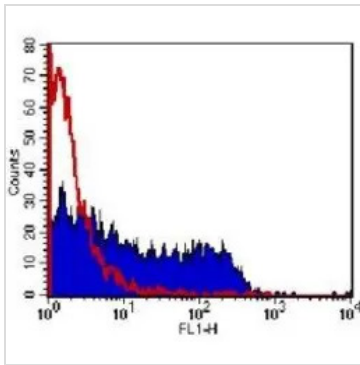


## GTX17269 ELISA Image

Data represents absorbancy readings for A10B phage on rabbit IgG (A10B/IgG), A10B phage on BSA (A10B/BSA), streptavidin on rabbit IgG (SA/IgG) and streptavidin on BSA (SA/BSA) for each dilution of biotinylated anti-M13 monoclonal antibody.



For full product information, images and publications, please visit our [website](#).



#### GTX17269 FCM Image

Colo320 cell line stained with a cell-line specific M13 phage antibody (filled profile), compared to an irrelevant phage antibody (open profile). Cells were incubated overnight with 1012 phage particles, then detected with 10ug/ml anti-M13 antibody followed by rabbit anti-mouse IgG:FITC



For full product information, images and publications, please visit our [website](#).