

NTCP antibody

Cat. No. GTX17430

宿主	Rabbit
克隆	Polyclonal
同种型	IgG
实验应用	WB, IHC-P
种属反应	Human, Mouse, Rat

引用文献 (1)

实验应用

应用说明

*最佳稀释倍数与浓度应由研究人员确认

Suggested dilution	Recommended dilution
WB	0.1-0.5µg/ml
IHC-P	0.5-1µg/ml

以下为常规应用缩写的中文注解

WB: 免疫印迹

ICC/IF: 细胞染色

IHC-P: 石蜡切片

IHC-Fr: 冰冻切片

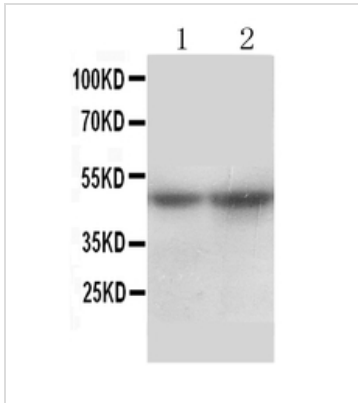
属性

形式	Liquid
存储溶液	0.1% Na ₂ HPO ₄ , 0.45% NaCl, 2.5% BSA
保存剂	0.025% Thimerosal, 0.025% Sodium azide
存放说明	Store as concentrated solution. Centrifuge briefly prior to opening vial. For short-term storage (1-2 weeks), store at 4°C. For long-term storage, aliquot and store at -20°C or below. Avoid multiple freeze-thaw cycles.
浓度	500 µg/ml (Please refer to the vial label for the specific concentration.)
偶联	Unconjugated
RRID	AB_2887562
注意事项	仅供实验室使用。不适用于人类或动物的任何临床, 治疗或诊断用途。不适合动物或人类食用。



For full product information, images and publications, please visit our [website](#).

產品圖片

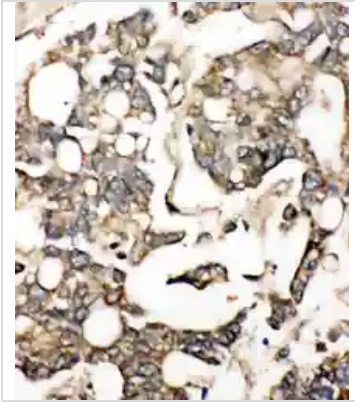
**GTX17430 WB Image**

WB analysis of various samples using GTX17430 NTCP antibody.

Lane 1 : rat liver tissue lysate at 50ug

Lane 2 : mouse liver tissue lysate at 50ug

Dilution : 0.5 µg/mL

**GTX17430 IHC-P Image**

IHC-P analysis of human liver cancer tissue using GTX17430 NTCP antibody.



For full product information, images and publications, please visit our [website](#).