

## NFkB p65 (phospho Ser529) antibody

**Cat. No. GTX17575**

宿主	Rabbit
克隆	Polyclonal
同种型	IgG
实验应用	WB, ICC/IF, IHC-P
种属反应	Human, Mouse

## 实验应用

## 应用说明

\*最佳稀释倍数与浓度应由研究人员确认

Suggested dilution	Recommended dilution
WB	Assay dependent
ICC/IF	Assay dependent
IHC-P	Assay dependent

以下为常规应用缩写的中文注解

WB: 免疫印迹

ICC/IF: 细胞染色

IHC-P: 石蜡切片

IHC-Fr: 冰冻切片

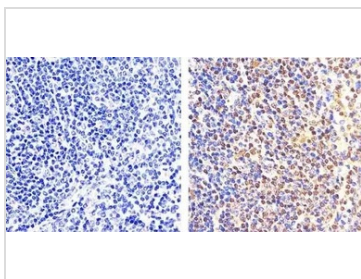
## 属性

形式	Liquid
存储溶液	PBS, 0.1% BSA, 50% Glycerol
保存剂	0.05% Sodium azide
存放说明	Store as concentrated solution. Centrifuge briefly prior to opening vial. For short-term storage (1-2 weeks), store at 4°C. For long-term storage, aliquot and store at -20°C or below. Avoid multiple freeze-thaw cycles.
浓度	Batch dependent (Please refer to the vial label for the specific concentration.)
偶联	Unconjugated
注意事项	仅供实验室使用。不适用于人类或动物的任何临床, 治疗或诊断用途。不适合动物或人类食用。



For full product information, images and publications, please visit our [website](#).

## 產品圖片

**GTX17575 IHC-P Image**

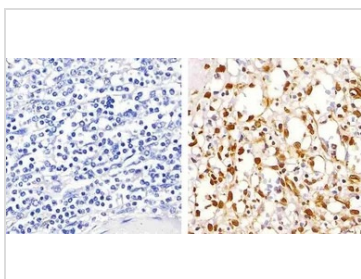
IHC-P analysis of mouse spleen tissue using GTX17575 NFκB p65 (phospho Ser529) antibody.

Right : Primary antibody

Left : a negative control without primary antibody

Dilution : 1:50 overnight at 4°C

Antigen retrieval : 10mM sodium citrate (pH 6.0), microwaved for 8-15 mins

**GTX17575 IHC-P Image**

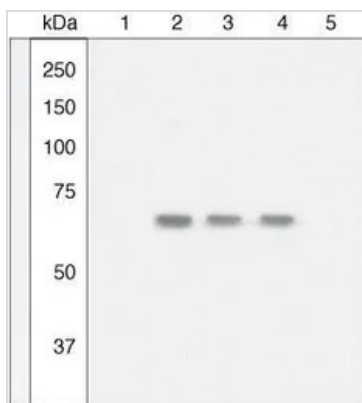
IHC-P analysis of human spleen tissue using GTX17575 NFκB p65 (phospho Ser529) antibody.

Right : Primary antibody

Left : a negative control without primary antibody

Dilution : 1:20 overnight at 4°C

Antigen retrieval : 10mM sodium citrate (pH 6.0), microwaved for 8-15 mins

**GTX17575 WB Image**

WB analysis of Jurkat cells unstimulated (lane 1) or stimulated with PMA and Ca<sup>2+</sup> (lane 2-5) using GTX17575 NFκB p65 (phospho Ser529) antibody.

Lane 1 and 2 : no peptide

Lane 3 : non-phospho peptide

Lane 4 : generic [pS] peptide

Lane 5 : phosphopeptide immunogen



For full product information, images and publications, please visit our [website](#).