

## CD63 antibody [MEM-259] (FITC)

Cat. No. GTX18235

宿主	Mouse
克隆	Monoclonal
同种型	IgG1
实验应用	ICC/IF, FCM
种属反应	Human

引用文献 (9)

## 实验应用

## 应用说明

\*最佳稀释倍数与浓度应由研究人员确认

Suggested dilution	Recommended dilution
ICC/IF	Assay dependent
FCM	20 µl reagent / 100 µl of whole blood or 10 <sup>6</sup> cells in a suspension

以下为常规应用缩写的中文注解

WB: 免疫印迹

ICC/IF: 细胞染色

IHC-P: 石蜡切片

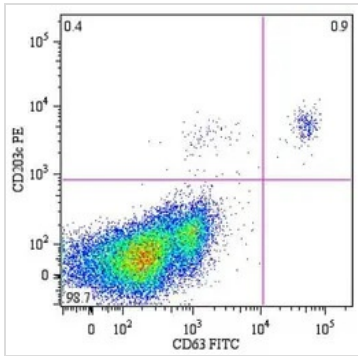
IHC-Fr: 冰冻切片

## 属性

形式	Liquid
存储溶液	PBS
保存剂	15mM Sodium azide
存放说明	Store as concentrated solution. Centrifuge briefly prior to opening vial. Store at 4°C. DO NOT FREEZE. Protect from light.
浓度	Batch dependent (Please refer to the vial label for the specific concentration.)
偶联	Fluorescein isothiocyanate (FITC) <a href="#">Wavelength</a>
RRID	AB_423141
注意事项	仅供实验室使用。不适用于人类或动物的任何临床, 治疗或诊断用途。不适合动物或人类食用。

For full product information, images and publications, please visit our [website](#).

## 產品圖片

**GTX18235 FCM Image**

FACS analysis of peripheral blood lymphocytes from a patient with allergy to bee venom after stimulation with bee venom using GTX18235 CD63 antibody [MEM-259] (FITC).



For full product information, images and publications, please visit our [website](#).