

CD5 antibody [CRIS1] (FITC)

Cat. No. GTX21156

宿主	Mouse
克隆	Monoclonal
同种型	IgG2a
实验应用	FCM
种属反应	Human

实验应用

应用说明

*最佳稀释倍数与浓度应由研究人员确认

Suggested dilution	Recommended dilution
FCM	20 μ l reagent / 100 μ l of whole blood or 10^6 cells in a suspension

以下为常规应用缩写的中文注解

WB: 免疫印迹

ICC/IF: 细胞染色

IHC-P: 石蜡切片

IHC-Fr: 冰冻切片

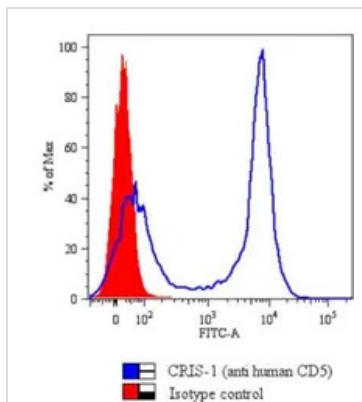
属性

形式	Liquid
存储溶液	PBS
保存剂	15mM Sodium azide
存放说明	Store as concentrated solution. Centrifuge briefly prior to opening vial. Store at 4°C. DO NOT FREEZE. Protect from light.
浓度	Batch dependent (Please refer to the vial label for the specific concentration.)
偶联	Fluorescein isothiocyanate (FITC) Wavelength
注意事项	仅供实验室使用。不适用于人类或动物的任何临床，治疗或诊断用途。不适合动物或人类食用。

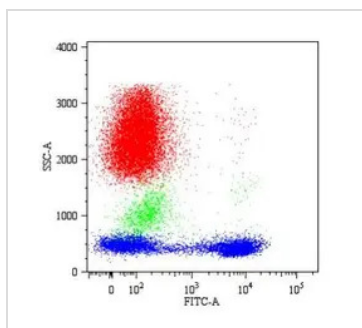


For full product information, images and publications, please visit our [website](#).

產品圖片

**GTX21156 FCM Image**

Flow Cytometry analysis of human Peripheral Blood Lymphocytes (PBL) stained with CD5: FITC antibody (GTX21248) (dilution of purified antibody 1 µg/ml) Fig. 1a Histogram - gated on lymphocytes, overlay with isotypic control (mouse IgG2a)

**GTX21156 FCM Image**

Flow Cytometry analysis of human Peripheral Blood Lymphocytes (PBL) stained with CD5: FITC antibody (GTX21248) (dilution of purified antibody 1 µg/ml) Fig. 1b Dot plot



For full product information, images and publications, please visit our [website](#).