

SMC1 (phospho Ser966) antibody

Cat. No. GTX21276

宿主	Rabbit
克隆	Polyclonal
同种型	IgG
实验应用	WB, ICC/IF, IHC-P, IP, ELISA, PLA
种属反应	Human, Mouse

引用文献 (2)

实验应用

应用说明

*最佳稀释倍数与浓度应由研究人员确认

Suggested dilution	Recommended dilution
WB	1:500 - 1:5000
ICC/IF	1:250 - 1:1000
IHC-P	1:500 - 1:2000
IP	2 - 6 µg/mg lysate
ELISA	1:100 - 1:2000
PLA	1:1000 - 1:20000

以下为常规应用缩写的中文注解

WB: 免疫印迹

ICC/IF: 细胞染色

IHC-P: 石蜡切片

IHC-Fr: 冰冻切片

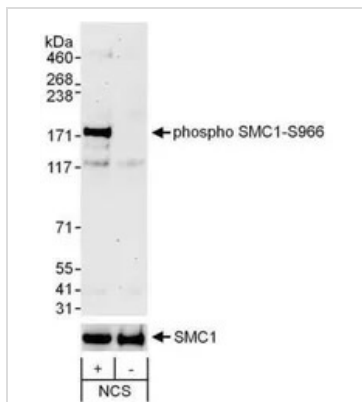
属性

形式	Liquid
存储溶液	Tris-Citrate/Phosphate
保存剂	0.09% Sodium azide
存放说明	Store as concentrated solution. Centrifuge briefly prior to opening vial. Store at 4°C. DO NOT FREEZE.
浓度	1 mg/ml (Please refer to the vial label for the specific concentration.)
偶联	Unconjugated
RRID	AB_373026
注意事项	仅供实验室使用。不适用于人类或动物的任何临床、治疗或诊断用途。不适合动物或人类食用。



For full product information, images and publications, please visit our [website](#).

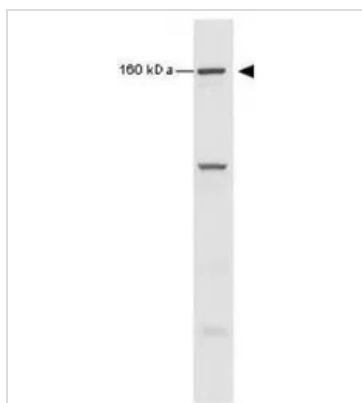
產品圖片



GTX21276 WB Image

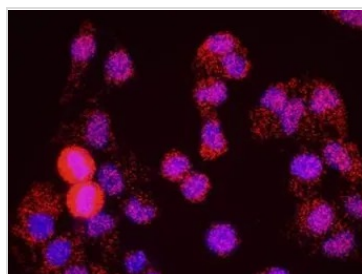
WB analysis of NCS treated(+; 200 ng/ml; 1h) or mock treated (-) HeLa cell using GTX21276 SMC1 (phospho Ser966) antibody.

Dilution : 0.1 µg/ml



GTX21276 WB Image

WB analysis of HeLa cells (30 µg/lane) treated with 10 Gy ionizing irradiation using GTX21276 SMC1 (phospho Ser966) antibody.

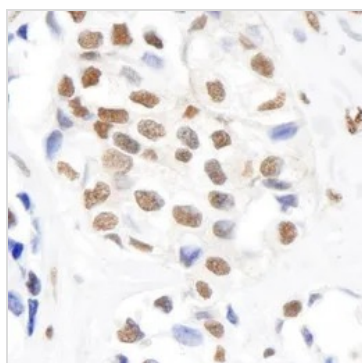


GTX21276 PLA Image

PLA analysis of HeLa cells using GTX21276 SMC1 (phospho Ser966) antibody and anti-human SA1 antibody.

Red : positive signal

Blue : DAPI



GTX21276 IHC-P Image

IHC-P analysis of human breast carcinoma tissue using GTX21276 SMC1 (phospho Ser966) antibody.

Dilution : 1 µg/ml



For full product information, images and publications, please visit our [website](#).