

## Goat Anti-Mouse IgG antibody (DyLight594)

Cat. No. GTX213111-05

宿主	Goat
克隆	Polyclonal
同种型	IgG
实验应用	WB, ICC/IF, IHC-P, IHC-Fr
种属反应	Mouse

引用文献 ( 11 )

Package

500 µl

## 实验应用

## 应用说明

\*最佳稀释倍数与浓度应由研究人员确认

Suggested dilution	Recommended dilution
WB	Assay dependent
ICC/IF	1:100-1:1000
IHC-P	1:100-1:1000
IHC-Fr	1:100-1:1000

以下为常规应用缩写的中文注解

WB: 免疫印迹

ICC/IF: 细胞染色

IHC-P: 石蜡切片

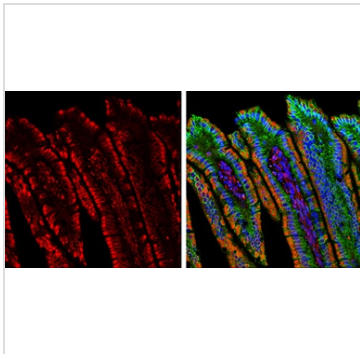
IHC-Fr: 冰冻切片

## 属性

形式	Liquid
存储溶液	PBS
保存剂	No preservative
存放说明	Store as concentrated solution. Centrifuge briefly prior to opening vial. For short-term storage (1-2 weeks), store at 4°C. For long-term storage, aliquot and store at -20°C or below. Avoid multiple freeze-thaw cycles. Protect from light.
浓度	2 mg/ml (Please refer to the vial label for the specific concentration.)
免疫原	Highly purified whole mouse IgG
纯化方式	Purified by antigen-affinity chromatography.
偶联	DyLight594 <a href="#">Wavelength</a>
RRID	AB_2887581
注意事项	仅供实验室使用。不适用于人类或动物的任何临床，治疗或诊断用途。不适合动物或人类食用。

For full product information, images and publications, please visit our [website](#).

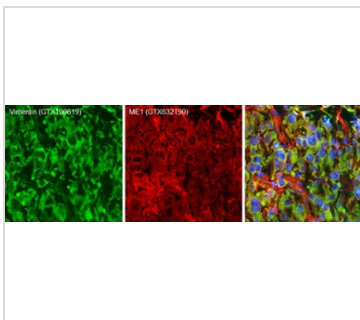
## 產品圖片



### GTX213111-05 IHC-P Image

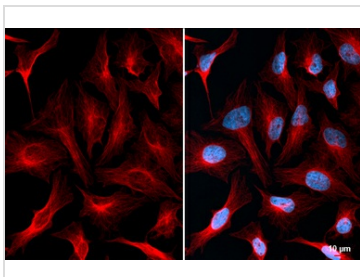
Double-labeled immunofluorescence photomicrographs of paraffin-embedded sections of mouse colon.  
 Red: alpha Tubulin antibody [GT114] (GTX628802) diluted at 1:500. The signal was developed using goat anti-mouse IgG antibody (Dylight594) (GTX213111-05).  
 Green: E-Cadherin antibody (GTX100443) diluted at 1:500. The signal was developed using goat anti-rabbit IgG antibody (Dylight488) (GTX213110-04).  
 Blue: Fluoroshield with DAPI (GTX30920).

Antigen Retrieval: Citrate buffer, pH 6.0, 15 min



### GTX213111-05 IHC-Fr Image

Double-labeled immunofluorescence photomicrographs of frozen sections of mouse brain.  
 Green: Vimentin antibody (GTX100619) diluted at 1:200. The signal was developed using goat anti-rabbit IgG antibody (Dylight488) (GTX213110-04).  
 Red: ME1 antibody [GT15611] (GTX632190) diluted at 1:200. The signal was developed using goat anti-mouse IgG antibody (Dylight594) (GTX213111-05).  
 Blue: Nuclear staining with Hoechst 33342.



### GTX213111-05 ICC/IF Image

alpha Tubulin antibody [GT114] detects alpha Tubulin protein at cytoskeleton by immunofluorescent analysis.  
 Sample: HeLa cells were fixed in 4% paraformaldehyde at RT for 15 min.  
 Red: alpha Tubulin stained by alpha Tubulin antibody (GTX628802) diluted at 1:1000.  
 The signal was developed using Mouse IgG antibody (DyLight594) (GTX213111-05) diluted at 1:1000.  
 Blue: Fluoroshield with DAPI (GTX30920).



For full product information, images and publications, please visit our [website](https://www.genetex.com).