

## CaMKII alpha (phospho Thr286) antibody [22B1]

Cat. No. GTX22724

宿主	Mouse
克隆	Monoclonal
同种型	IgG1
实验应用	WB, ICC/IF, FCM, IP, ELISA, IHC
种属反应	Human, Mouse, Rat, Rabbit

引用文献 (1)

## 实验应用

## 应用说明

\*最佳稀释倍数与浓度应由研究人员确认

Suggested dilution	Recommended dilution
WB	1:2,000
ICC/IF	1:50-1:100
FCM	1µg per 10 <sup>6</sup> cells
IP	Assay dependent
ELISA	Assay dependent
IHC	Assay dependent

以下为常规应用缩写的中文注解

WB: 免疫印迹

ICC/IF: 细胞染色

IHC-P: 石蜡切片

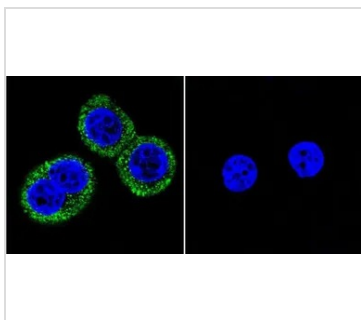
IHC-Fr: 冰冻切片

## 属性

形式	Liquid
存储溶液	PBS
保存剂	0.05% Sodium azide
存放说明	Store as concentrated solution. Centrifuge briefly prior to opening vial. For short-term storage (1-2 weeks), store at 4°C. For long-term storage, aliquot and store at -20°C or below. Avoid multiple freeze-thaw cycles.
浓度	1 mg/ml (Please refer to the vial label for the specific concentration.)
偶联	Unconjugated
注意事项	仅供实验室使用。不适用于人类或动物的任何临床、治疗或诊断用途。不适合动物或人类食用。

For full product information, images and publications, please visit our [website](#).

## 產品圖片

**GTX22724 ICC/IF Image**

ICC/IF analysis of U251 cells using GTX22724 CaMKII alpha (phospho Thr286) antibody [22B1]. Cells were probed without (right) or with(left) an antibody.

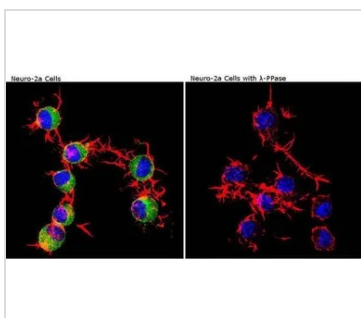
Green : Primary antibody

Blue : Nuclei

Red : Actin

Fixation : formaldehyde

Dilution : 1:100 overnight at 4 °C

**GTX22724 ICC/IF Image**

ICC/IF analysis of Neuro-2a cells (left panel) or cells stimulated with Lambda-Phosphatase (Lambda-PPase) (right panel) using GTX22724 CaMKII alpha (phospho Thr286) antibody [22B1].

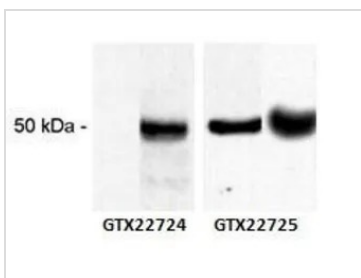
Green : Primary antibody

Blue : Nuclei

Red : Actin

Fixation : Formalin

Permeabilization : 0.1% Triton X-100 in TBS for 5-10 minute

**GTX22724 WB Image**

WB analysis of unphosphorylated and phosphorylated rat brain homogenate (left and right lanes respectively) using GTX22724 CaMKII alpha (phospho Thr286) antibody [22B1] or GTX22725CaMKII alpha antibody [6G9] .



For full product information, images and publications, please visit our [website](#).