

SOX9 (phospho Ser181) antibody

Cat. No. GTX23696

宿主	Rabbit
克隆	Polyclonal
同种型	IgG
实验应用	WB, Dot
种属反应	Human, Mouse, Bovine

实验应用

应用说明

Dot Blot : 1.0 µg/ml

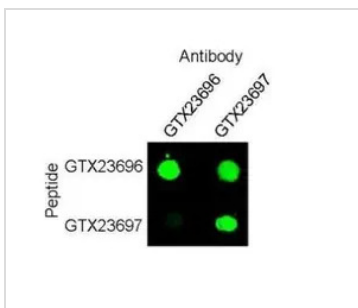
WB : 0.5 to 2.0 µg/ml

Optimal dilutions / concentrations should be determined by the end user.

属性

形式	Liquid
存储溶液	PBS, 0.1% BSA
保存剂	0.05% Sodium azide
存放说明	Store as concentrated solution. Centrifuge briefly prior to opening vial. For short-term storage (1-2 weeks), store at 4°C. For long-term storage, aliquot and store at -20°C or below. Avoid multiple freeze-thaw cycles.
浓度	0.2 mg/ml (Please refer to the vial label for the specific concentration.)
偶联	Unconjugated
注意事项	仅供实验室使用。不适用于人类或动物的任何临床, 治疗或诊断用途。不适合动物或人类食用。

产品图片



GTX23696 Dot Image

Dot blot analysis of the SOX-9 peptide (pSer181) and SOX-9 peptide probed with the anti-SOX-9 (pSer181) (GTX23696) and anti-SOX-9 (GTX23697).

The staining shows that the anti-SOX-9 (pSer181) recognized the SOX-9 peptide (pSer181) only; while the anti-SOX-9 could bind both the SOX-9 peptide (pSer181) and SOX-9 peptide.



For full product information, images and publications, please visit our [website](#).