

TSH receptor antibody [49]

Cat. No. GTX25492

宿主	Mouse
克隆	Monoclonal
同种型	IgG1
实验应用	WB, ICC/IF, ELISA
种属反应	Human, Pig

实验应用

应用说明

*最佳稀释倍数与浓度应由研究人员确认

Suggested dilution	Recommended dilution
WB	1:250
ICC/IF	1:250
ELISA	Assay dependent

以下为常规应用缩写的中文注解

WB: 免疫印迹

ICC/IF: 细胞染色

IHC-P: 石蜡切片

IHC-Fr: 冰冻切片

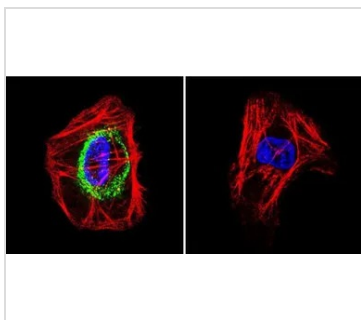
属性

形式	Liquid
存储溶液	Ascites
保存剂	0.05% Sodium azide
存放说明	Store as concentrated solution. Centrifuge briefly prior to opening vial. For short-term storage (1-2 weeks), store at 4°C. For long-term storage, aliquot and store at -20°C or below. Avoid multiple freeze-thaw cycles.
偶联	Unconjugated
注意事项	仅供实验室使用。不适用于人类或动物的任何临床、治疗或诊断用途。不适合动物或人类食用。



For full product information, images and publications, please visit our [website](#).

產品圖片

**GTX25492 ICC/IF Image**

ICC/IF analysis of A431 cells using GTX25492 TSH receptor antibody [49]. Cells were probed without (right) or with(left) an antibody.

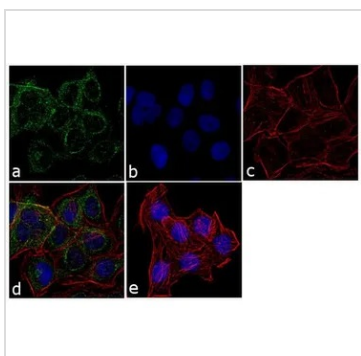
Green : Primary antibody

Blue : Nuclei

Red : Actin

Fixation : formaldehyde

Dilution : 1:200 overnight at 4°C

**GTX25492 ICC/IF Image**

ICC/IF analysis of A431 cells using GTX25492 TSH receptor antibody [49]. Panel e is a no primary antibody control.

Green : Primary antibody

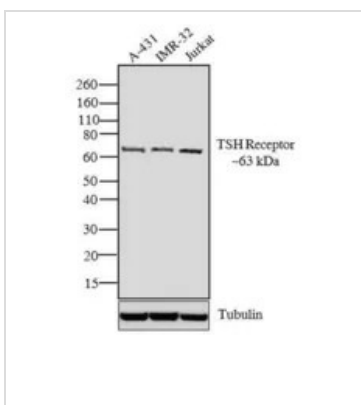
Blue : Nuclei

Red : Actin

Fixation : 4% paraformaldehyde

Permeabilization : 0.1% Triton X-100 for 10 minute

Dilution : 1:250 dilution in 0.1% BSA and incubated for 3 hours at room temperature

**GTX25492 WB Image**

WB analysis of membrane-enriched extracts (30 µg lysate) of A-431 (Lane 1), IMR-32 (Lane 2) and Jurkat (Lane 3) using GTX25492 TSH receptor antibody [49].

Dilution : 1:250



For full product information, images and publications, please visit our [website](#).