

Donkey Anti-Goat IgG antibody, pre-adsorbed (Cy2)

Cat. No. GTX26948

宿主	Donkey
克隆	Polyclonal
同种型	IgG
实验应用	WB, ICC/IF, FCM, ELISA, IHC
种属反应	Goat

引用文献 (1)

Package

100 µg

实验应用

应用说明

*最佳稀释倍数与浓度应由研究人员确认

Suggested dilution	Recommended dilution
WB	Assay dependent
ICC/IF	1:1000-1:5000
FCM	1:500-1:2500
ELISA	1:10000-1:50000
IHC	Assay dependent

以下为常规应用缩写的中文注解

WB: 免疫印迹

ICC/IF: 细胞染色

IHC-P: 石蜡切片

IHC-Fr: 冰冻切片

产品说明

This antibody has been pre-adsorbed against Chicken, Guinea Pig, Hamster, Horse, Mouse, Rabbit and Rat serum proteins to ensure minimal cross-reactivity. Cross-reactivity with other species, however, is possible.

属性

形式	Liquid
存储溶液	0.02M Potassium Phosphate, 0.15M NaCl, 1% BSA
保存剂	0.01% Sodium azide
存放说明	Store as concentrated solution. Centrifuge briefly prior to opening vial. For short-term storage (1-2 weeks), store at 4°C. For long-term storage, aliquot and store at -20°C or below. Avoid multiple freeze-thaw cycles. Protect from light.
浓度	1 mg/ml (Please refer to the vial label for the specific concentration.)
免疫原	Goat IgG whole molecule
纯化方式	Immunogen affinity purified



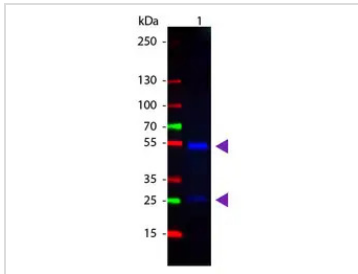
For full product information, images and publications, please visit our [website](#).

偶联 Cyanine2 (Cy2) [Wavelength](#)

RRID AB_373648

注意事项 仅供实验室使用。不适用于人类或动物的任何临床，治疗或诊断用途。不适合动物或人类食用。

產品图片



GTX26948 WB Image

WB analysis of goat IgG using GTX26948 Donkey Anti-Goat IgG antibody, pre-adsorbed (Cy2).

Loading : 50 ng

Dilution : 1:1000



For full product information, images and publications, please visit our [website](#).