

## CUGBP1 antibody [3B1]

Cat. No. GTX29549

宿主	Mouse
克隆	Monoclonal
同种型	IgG1
实验应用	WB, ICC/IF, IHC-P, IHC-Fr, FCM, IP, Gel supershift assays
种属反应	Human, Mouse, Rat, Rabbit, Bovine, Pig, Primate

## 实验应用

## 应用说明

\*最佳稀释倍数与浓度应由研究人员确认

Suggested dilution	Recommended dilution
WB	1:500
ICC/IF	1:50 - 1:200
IHC-P	1:100 - 1:500
IHC-Fr	1:100 - 1:500
FCM	1 µg / 10 <sup>6</sup> cells
IP	Assay dependent
Gel supershift assays	Assay dependent

**Note : Permeabilization step is needed.**

以下为常规应用缩写的中文注解

WB: 免疫印迹

ICC/IF: 细胞染色

IHC-P: 石蜡切片

IHC-Fr: 冰冻切片

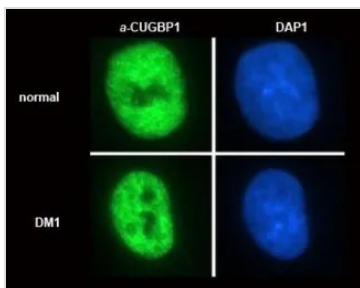
## 属性

形式	Liquid
存储溶液	Tris-Glycine, 150mM NaCl
保存剂	0.02% Sodium azide
存放说明	Store as concentrated solution. Centrifuge briefly prior to opening vial. For short-term storage (1-2 weeks), store at 4°C. For long-term storage, aliquot and store at -20°C or below. Avoid multiple freeze-thaw cycles.
浓度	1 mg/ml (Please refer to the vial label for the specific concentration.)
偶联	Unconjugated
注意事项	仅供实验室使用。不适用于人类或动物的任何临床，治疗或诊断用途。不适合动物或人类食用。



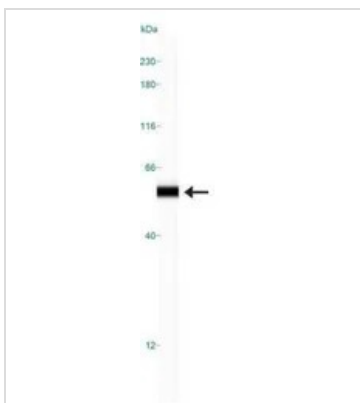
For full product information, images and publications, please visit our [website](#).

產品圖片



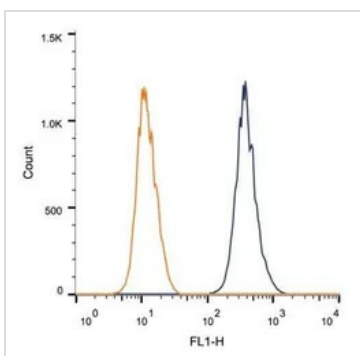
**GTX29549 ICC/IF Image**

ICC/IF analysis of normal and DM1 (dystrophia myotonica) myoblasts using GTX29549 CUGBP1 antibody [3B1].



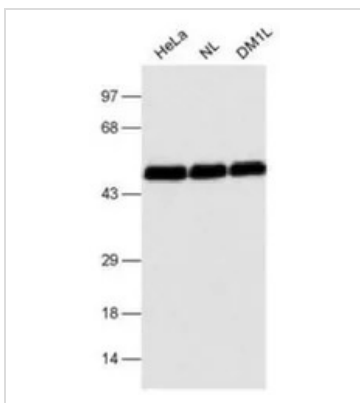
**GTX29549 WB Image**

WB analysis of HeLa cell lysate using GTX29549 CUGBP1 antibody [3B1].



**GTX29549 FCM Image**

FACS (Intracellular staining) analysis of MCF-7 cells using GTX29549 CUGBP1 antibody [3B1].  
 Blue : Primary antibody  
 Orange : isotype control  
 Dilution : 1 μg/10<sup>6</sup> cells



**GTX29549 WB Image**

WB analysis of multiple cell lysate using GTX29549 CUGBP1 antibody [3B1].



For full product information, images and publications, please visit our [website](#).