

GTX300018

DSB Relative Repair Antibody Panel

Product Content

Cat No	Product Name	种属反应	实验应用	Package
GTX101820	Ku70 antibody	Human, Mouse	WB, ICC/IF, IHC-P, IP, PLA	25 µl
GTX213111-01	Goat Anti-Mouse IgG antibody (HRP)	Mouse	WB, IHC-P, ELISA, IHC	25 µl
GTX636713	Histone H2A.XS139ph (phospho Ser139) antibody [HL1299]	Human, Mouse	WB, ICC/IF, IHC-P	25 µl
GTX636826	Mre11 antibody [HL1386]	Human, Mouse, Rat, Dog	WB, ICC/IF, IHC-P	25 µl
GTX70222	NBS1 antibody [1C3]	Human, Mouse	WB, ICC/IF, IP	25 µl
GTX70228	Rad50 antibody [13B3]	Human, Mouse, Rat, Monkey	WB, ICC/IF, IHC-P, IP, ChIP assay, IHC, in vitro, PLA	25 µl
GTX70276	Ku80 antibody [149.8]	Human, Monkey	WB, ICC/IF	25 µl

注意事项

For In vitro laboratory use only. Not for any clinical, therapeutic, or diagnostic use in humans or animals. Not for animal or human consumption.



For full product information, images and publications, please visit our [website](#).

Ku70 antibody

Cat. No. GTX101820

宿主	Rabbit
克隆	Polyclonal
同种型	IgG
实验应用	WB, ICC/IF, IHC-P, IP, PLA
种属反应	Human, Mouse

引用文献 (20)

实验应用

应用说明

*最佳稀释倍数与浓度应由研究人员确认

Suggested dilution	Recommended dilution
WB	1:500-1:3000
ICC/IF	1:100-1:1000
IHC-P	1:100-1:1000
IP	1:500-1:1000
PLA	Assay dependent

以下为常规应用缩写的中文注解

WB: 免疫印迹

ICC/IF: 细胞染色

IHC-P: 石蜡切片

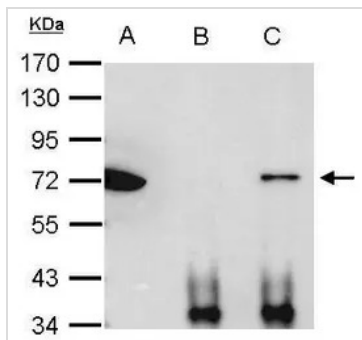
IHC-Fr: 冰冻切片

属性

形式	Liquid
存储溶液	PBS, 20% Glycerol
保存剂	0.025% ProClin 300
存放说明	Store as concentrated solution. Centrifuge briefly prior to opening vial. For short-term storage (1-2 weeks), store at 4°C. For long-term storage, aliquot and store at -20°C or below. Avoid multiple freeze-thaw cycles.
浓度	0.25 mg/ml (Please refer to the vial label for the specific concentration.)
偶联	Unconjugated
RRID	AB_1241460
注意事项	仅供实验室使用。不适用于人类或动物的任何临床、治疗或诊断用途。不适合动物或人类食用。

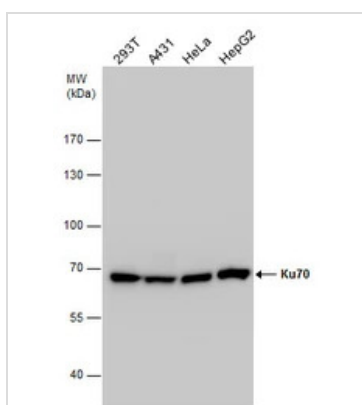
For full product information, images and publications, please visit our [website](#).

產品圖片



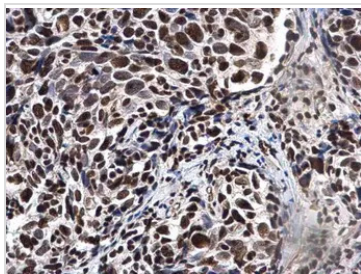
GTx101820 IP Image

Ku70 antibody immunoprecipitates Ku70 protein in IP experiments. IP Sample: 1000 μ g HeLa whole cell lysate/extract A. 40 μ g HeLa whole cell lysate/extract B. Control with 2.5 μ g of preimmune rabbit IgG C. Immunoprecipitation of Ku70 protein by 2.5 μ g of Ku70 antibody (GTx101820) 7.5% SDS-PAGE The immunoprecipitated Ku70 protein was detected by Ku70 antibody (GTx101820) diluted at 1:1000. EasyBlot anti-rabbit IgG (GTx221666-01) was used as a secondary reagent.



GTx101820 WB Image

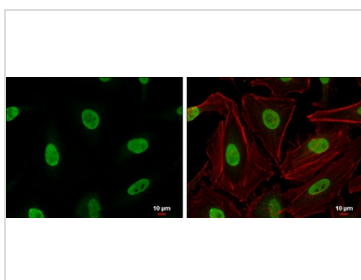
Ku70 antibody detects Ku70 protein by western blot analysis. Various whole cell extracts (30 μ g) were separated by 7.5% SDS-PAGE, and the membrane was blotted with Ku70 antibody (GTx101820) diluted by 1:2000. The HRP-conjugated anti-rabbit IgG antibody (GTx213110-01) was used to detect the primary antibody.



GTx101820 IHC-P Image

Ku70 antibody detects Ku70 protein at nucleus in human cervical cancer by immunohistochemical analysis. Sample: Paraffin-embedded human cervical cancer. Ku70 antibody (GTx101820) diluted at 1:500.

Antigen Retrieval: Citrate buffer, pH 6.0, 15 min

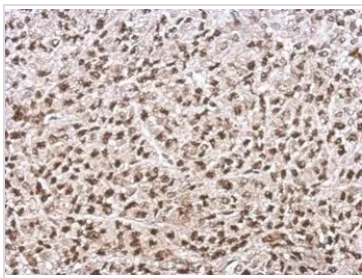


GTx101820 ICC/IF Image

Ku70 antibody detects Ku70 protein at nucleus by immunofluorescent analysis. Samples: HeLa cells were fixed in 4% paraformaldehyde at RT for 15 min. Green: Ku70 protein stained by Ku70 antibody (GTx101820) diluted at 1:200. Red: phalloidin, a cytoskeleton marker, diluted at 1:200. Scale bar = 10 μ m.

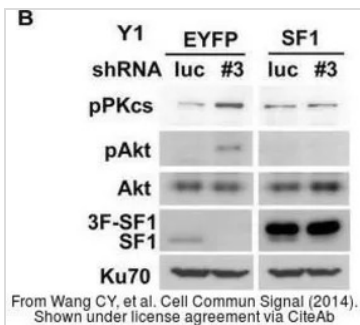


For full product information, images and publications, please visit our [website](http://www.genetex.com).


GTX101820 IHC-P Image

Immunohistochemical analysis of paraffin-embedded D54 xenograft, using Ku70(GTX101820) antibody at 1:500 dilution.

Antigen Retrieval: Trilogy™ (EDTA based, pH 8.0) buffer, 15min


GTX101820 WB Image

The data was published in the journal Cell Commun Signal in 2014. [PMID: 25421435](https://pubmed.ncbi.nlm.nih.gov/25421435/)



For full product information, images and publications, please visit our [website](https://www.genetex.com).

Goat Anti-Mouse IgG antibody (HRP)

Cat. No. GTX213111-01

宿主	Goat
克隆	Polyclonal
同种型	IgG
实验应用	WB, IHC-P, ELISA, IHC
种属反应	Mouse

引用文献 (402)
Package
1 ml

实验应用

应用说明

*最佳稀释倍数与浓度应由研究人员确认

Suggested dilution	Recommended dilution
WB	1:5000-1:20000
IHC-P	1:100-1:1000
ELISA	1:5000-1:20000
IHC	Assay dependent

以下为常规应用缩写的中文注解

WB: 免疫印迹

ICC/IF: 细胞染色

IHC-P: 石蜡切片

IHC-Fr: 冰冻切片

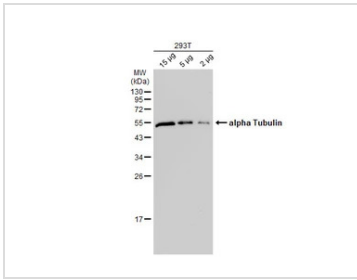
属性

形式	Liquid
存储溶液	0.05M Tris, 0.15M NaCl, 1%BSA
保存剂	0.025% ProClin 300
存放说明	Store as concentrated solution. Centrifuge briefly prior to opening vial. For short-term storage (1-2 weeks), store at 4°C. For long-term storage, aliquot and store at -20°C or below. Avoid multiple freeze-thaw cycles.
浓度	0.25 mg/ml (Please refer to the vial label for the specific concentration.)
免疫原	Highly purified whole mouse IgG
纯化方式	Purified by antigen-affinity chromatography.
偶联	Horseradish peroxidase(HRP)
RRID	AB_10618076
注意事项	仅供实验室使用。不适用于人类或动物的任何临床、治疗或诊断用途。不适合动物或人类食用。

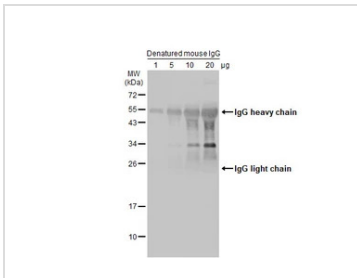


For full product information, images and publications, please visit our [website](#).

產品圖片

**GTX213111-01 WB Image**

Various whole cell extracts were separated by 12% SDS-PAGE, and the membrane was blotted with alpha Tubulin antibody [GT114] (GTX628802) diluted at 1:10000. The HRP-conjugated anti-mouse IgG antibody (GTX213111-01) was used to detect the primary antibody.

**GTX213111-01 WB Image**

Various amounts of denatured mouse IgG protein were separated by 12% SDS-PAGE, and the membrane was blotted with HRP-conjugated anti-rabbit IgG antibody (GTX213110-01) diluted at 1:5000.

**GTX213111-01 IHC-P Image**

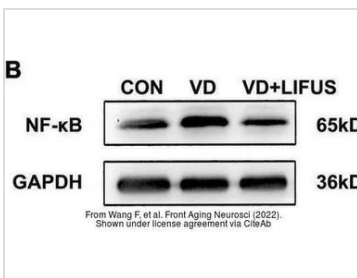
E2F1 antibody [16G7] detects E2F1 protein at nucleus in mouse cervix by immunohistochemical analysis.

Sample: Paraffin-embedded mouse cervix.

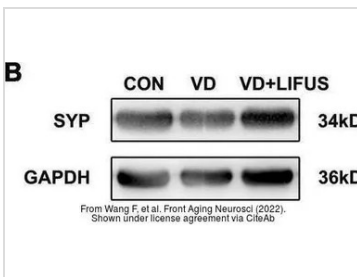
E2F1 antibody [16G7] (GTX70163) diluted at 1:500.

The signal was developed by Mouse IgG antibody (HRP) (GTX213111-01).

Antigen Retrieval: Citrate buffer, pH 6.0, 15 min

**GTX213111-01 WB Image**

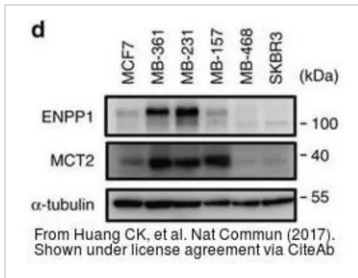
The data was published in the 2022 in Front Aging Neurosci. [PMID: 35264943](https://doi.org/10.3389/fnagi.2022.852649)

**GTX213111-01 WB Image**

The data was published in the 2022 in Front Aging Neurosci. [PMID: 35264943](https://doi.org/10.3389/fnagi.2022.852649)

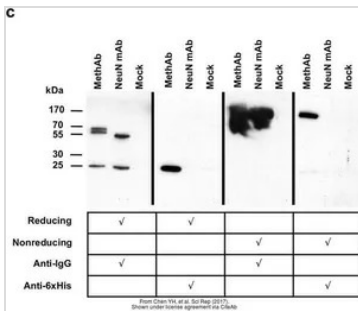


For full product information, images and publications, please visit our [website](https://www.genetex.com).



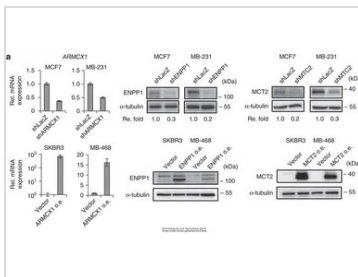
GTx213111-01 WB Image

The data was published in the 2017 in Nat Commun. [PMID: 28281525](#)



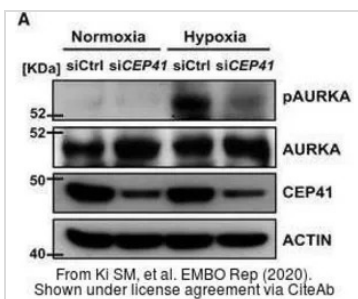
GTx213111-01 WB Image

The data was published in the 2017 in Sci Rep. [PMID: 28387350](#)



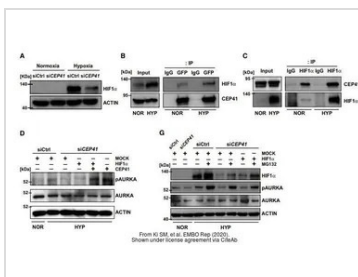
GTx213111-01 WB Image

The data was published in the 2017 in Nat Commun. [PMID: 28281525](#)



GTx213111-01 WB Image

The data was published in the journal EMBO Rep in 2020. [PMID: 31885126](#)

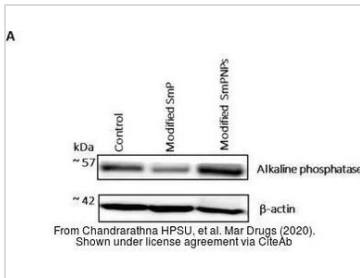


GTx213111-01 WB Image

The data was published in the journal EMBO Rep in 2020. [PMID: 31885126](#)

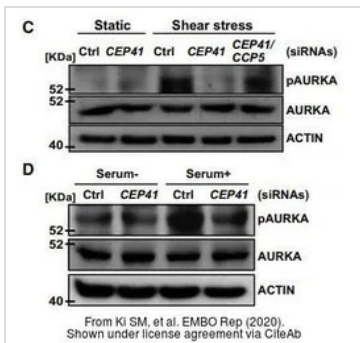


For full product information, images and publications, please visit our [website](#).



GTX213111-01 WB Image

The data was published in the journal Mar Drugs in 2020. [PMID: 32245246](https://pubmed.ncbi.nlm.nih.gov/32245246/)



GTX213111-01 WB Image

The data was published in the journal EMBO Rep in 2020. [PMID: 31885126](https://pubmed.ncbi.nlm.nih.gov/31885126/)



For full product information, images and publications, please visit our [website](https://www.genetex.com).

Histone H2A.XS139ph (phospho Ser139) antibody [HL1299]

Cat. No. GTX636713

宿主	Rabbit
克隆	Monoclonal
同种型	IgG
实验应用	WB, ICC/IF, IHC-P
种属反应	Human, Mouse

[引用文献 \(2\)](#)

实验应用

应用说明

*最佳稀释倍数与浓度应由研究人员确认

Suggested dilution	Recommended dilution
WB	1:500-1:3000
ICC/IF	Assay dependent
IHC-P	Assay dependent

以下为常规应用缩写的中文注解

WB: 免疫印迹

ICC/IF: 细胞染色

IHC-P: 石蜡切片

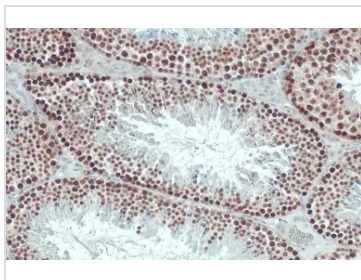
IHC-Fr: 冰冻切片

属性

形式	Liquid
存储溶液	PBS
保存剂	No preservative
存放说明	Store as concentrated solution. Centrifuge briefly prior to opening vial. For short-term storage (1-2 weeks), store at 4°C. For long-term storage, aliquot and store at -20°C or below. Avoid multiple freeze-thaw cycles.
浓度	1 mg/ml (Please refer to the vial label for the specific concentration.)
偶联	Unconjugated
RRID	AB_2910054
注意事项	仅供实验室使用。不适用于人类或动物的任何临床、治疗或诊断用途。不适合动物或人类食用。

For full product information, images and publications, please visit our [website](#).

產品圖片



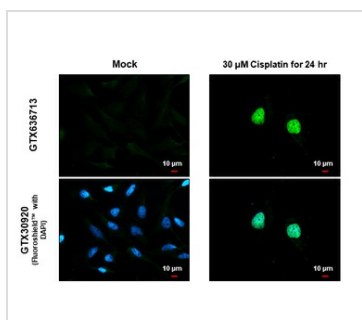
GTx636713 IHC-P Image

Histone H2A.XS139ph (phospho Ser139) antibody [HL1299] detects Histone H2A.XS139ph (phospho Ser139) protein at nucleus by immunohistochemical analysis.

Sample: Paraffin-embedded mouse testis.

Histone H2A.XS139ph (phospho Ser139) stained by Histone H2A.XS139ph (phospho Ser139) antibody [HL1299] (GTx636713) diluted at 1:100.

Antigen Retrieval: Citrate buffer, pH 6.0, 15 min



GTx636713 ICC/IF Image

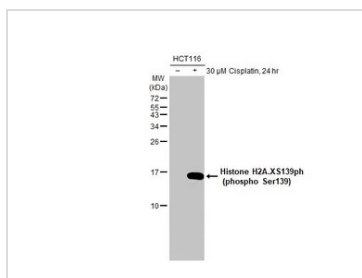
Histone H2A.XS139ph (phospho Ser139) antibody [HL1299] detects Histone H2A.XS139ph (phospho Ser139) protein at nucleus by immunofluorescent analysis.

Sample: Mock and treated HeLa cells were fixed in 4% paraformaldehyde at RT for 15 min.

Green: Histone H2A.XS139ph (phospho Ser139) stained by Histone H2A.XS139ph (phospho Ser139) antibody [HL1299] (GTx636713) diluted at 1:500.

Blue: Fluoroshield with DAPI (GTx30920).

Scale bar= 10μm.



GTx636713 WB Image

Untreated (-) and treated (+) HCT116 whole cell extracts (30 μg) were separated by 15% SDS-PAGE, and the membrane was blotted with Histone H2A.XS139ph (phospho Ser139) antibody [HL1299] (GTx636713) diluted at 1:1000. The HRP-conjugated anti-rabbit IgG antibody (GTx213110-01) was used to detect the primary antibody.



For full product information, images and publications, please visit our [website](https://www.genetex.com).

Mre11 antibody [HL1386]

Cat. No. GTX636826

宿主	Rabbit
克隆	Monoclonal
同种型	IgG
实验应用	WB, ICC/IF, IHC-P
种属反应	Human, Mouse, Rat, Dog

实验应用

应用说明

*最佳稀释倍数与浓度应由研究人员确认

Suggested dilution	Recommended dilution
WB	1:500-1:3000
ICC/IF	Assay dependent
IHC-P	Assay dependent

以下为常规应用缩写的中文注解

WB: 免疫印迹

ICC/IF: 细胞染色

IHC-P: 石蜡切片

IHC-Fr: 冰冻切片

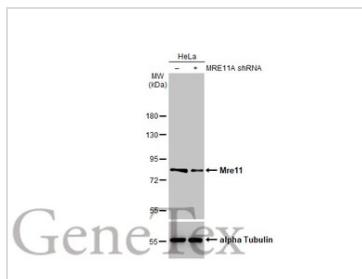
属性

形式	Liquid
存储溶液	PBS
保存剂	No preservative
存放说明	Store as concentrated solution. Centrifuge briefly prior to opening vial. For short-term storage (1-2 weeks), store at 4°C. For long-term storage, aliquot and store at -20°C or below. Avoid multiple freeze-thaw cycles.
浓度	1 mg/ml (Please refer to the vial label for the specific concentration.)
偶联	Unconjugated
RRID	AB_2910082
注意事项	仅供实验室使用。不适用于人类或动物的任何临床、治疗或诊断用途。不适合动物或人类食用。

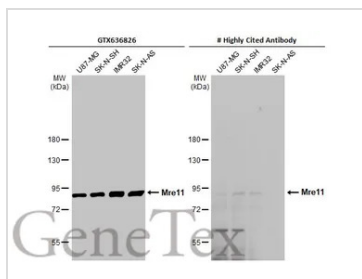


For full product information, images and publications, please visit our [website](#).

產品圖片

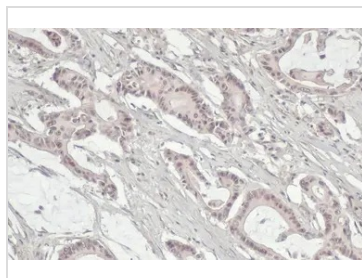
**GTx636826 WB Image**

Non-transfected (–) and transfected (+) HeLa whole cell extracts (30 µg) were separated by 7.5% SDS-PAGE, and the membrane was blotted with Mre11 antibody [HL1386] (GTx636826) diluted at 1:1000. The HRP-conjugated anti-rabbit IgG antibody (GTx213110-01) was used to detect the primary antibody.

**GTx636826 WB Image**

Various whole cell extracts (30 µg) were separated by 7.5% SDS-PAGE, and the membranes were blotted with Mre11 antibody [HL1386] (GTx636826) diluted at 1:1000 and competitor's antibody (# Highly Cited Antibody) diluted at 1:500. The HRP-conjugated anti-rabbit IgG antibody (GTx213110-01) was used to detect the primary antibody.

*The competitor is not affiliated with GeneTex and does not endorse this product.

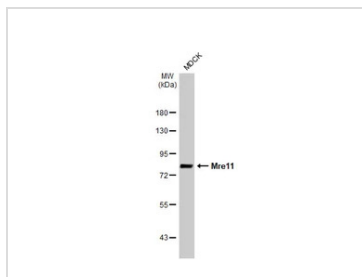
**GTx636826 IHC-P Image**

Mre11 antibody [HL1386] detects Mre11 protein at nucleus by immunohistochemical analysis.

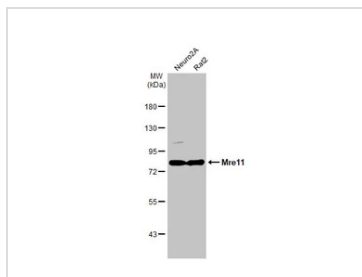
Sample: Paraffin-embedded human colon cancer.

Mre11 stained by Mre11 antibody [HL1386] (GTx636826) diluted at 1:500.

Antigen Retrieval: Citrate buffer, pH 6.0, 15 min

**GTx636826 WB Image**

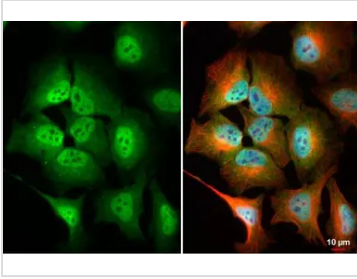
Whole cell extract (30 µg) was separated by 7.5% SDS-PAGE, and the membrane was blotted with Mre11 antibody [HL1386] (GTx636826) diluted at 1:1000. The HRP-conjugated anti-rabbit IgG antibody (GTx213110-01) was used to detect the primary antibody.

**GTx636826 WB Image**

Various whole cell extracts (30 µg) were separated by 7.5% SDS-PAGE, and the membrane was blotted with Mre11 antibody [HL1386] (GTx636826) diluted at 1:1000. The HRP-conjugated anti-rabbit IgG antibody (GTx213110-01) was used to detect the primary antibody.



For full product information, images and publications, please visit our [website](http://www.genetex.com).



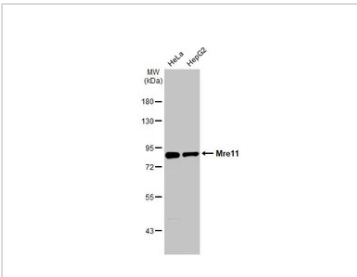
GTX636826 ICC/IF Image

Mre11 antibody [HL1386] detects Mre11 protein at cytoplasm and nucleus by immunofluorescent analysis.
Sample: HeLa cells were fixed in 4% paraformaldehyde at RT for 15 min.

Green: Mre11 stained by Mre11 antibody [HL1386] (GTX636826) diluted at 1:500.

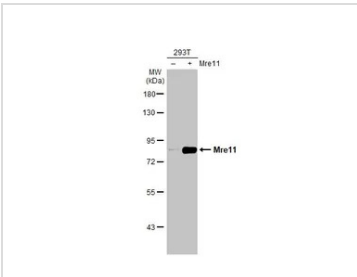
Red: alpha Tubulin, a cytoskeleton marker, stained by alpha Tubulin antibody [GT114] (GTX628802) diluted at 1:1000.

Blue: Fluoroshield with DAPI (GTX30920).



GTX636826 WB Image

Various whole cell extracts (30 µg) were separated by 7.5% SDS-PAGE, and the membrane was blotted with Mre11 antibody [HL1386] (GTX636826) diluted at 1:1000. The HRP-conjugated anti-rabbit IgG antibody (GTX213110-01) was used to detect the primary antibody.



GTX636826 WB Image

Non-transfected (–) and transfected (+) 293T whole cell extracts (30 µg) were separated by 7.5% SDS-PAGE, and the membrane was blotted with Mre11 antibody [HL1386] (GTX636826) diluted at 1:500000. The HRP-conjugated anti-rabbit IgG antibody (GTX213110-01) was used to detect the primary antibody.



For full product information, images and publications, please visit our [website](https://www.genetex.com).

NBS1 antibody [1C3]

Cat. No. GTX70222

宿主	Mouse
克隆	Monoclonal
同种型	IgG1
实验应用	WB, ICC/IF, IP
种属反应	Human, Mouse

引用文献 (15)

实验应用

应用说明

*最佳稀释倍数与浓度应由研究人员确认

Suggested dilution	Recommended dilution
WB	1:500-1:3000
ICC/IF	1:100
IP	Assay dependent

以下为常规应用缩写的中文注解

WB: 免疫印迹

ICC/IF: 细胞染色

IHC-P: 石蜡切片

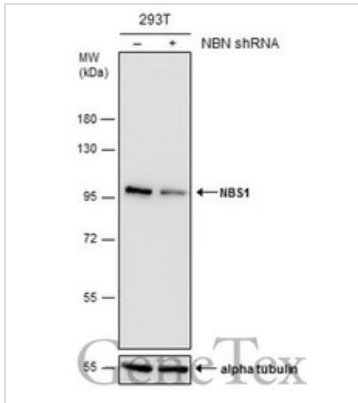
IHC-Fr: 冰冻切片

属性

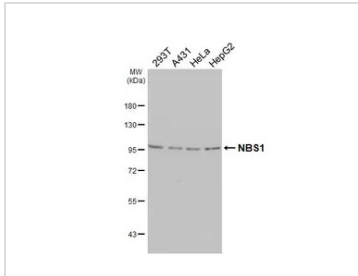
形式	Liquid
存储溶液	PBS, 20% Glycerol
保存剂	No preservative
存放说明	Store as concentrated solution. Centrifuge briefly prior to opening vial. For short-term storage (1-2 weeks), store at 4°C. For long-term storage, aliquot and store at -20°C or below. Avoid multiple freeze-thaw cycles.
浓度	1 mg/ml (Please refer to the vial label for the specific concentration.)
偶联	Unconjugated
RRID	AB_372443
注意事项	仅供实验室使用。不适用于人类或动物的任何临床、治疗或诊断用途。不适合动物或人类食用。



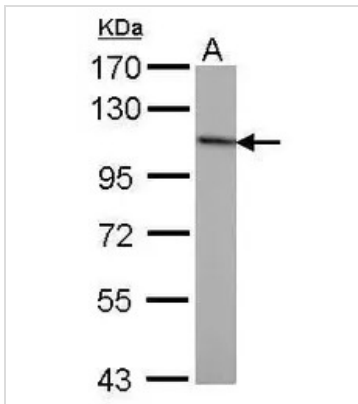
For full product information, images and publications, please visit our [website](#).

產品圖片

GTx70222 WB Image

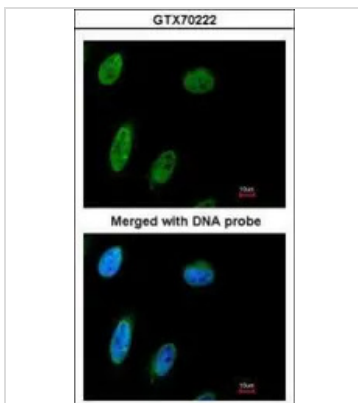
Non-transfected (–) and transfected (+) 293T whole cell extracts (30 µg) were separated by 7.5% SDS-PAGE, and the membrane was blotted with NBS1 antibody [1C3] (GTx70222) diluted at 1:500.


GTx70222 WB Image

Various whole cell extracts (30 µg) were separated by 7.5% SDS-PAGE, and the membrane was blotted with NBS1 antibody [1C3] (GTx70222) diluted at 1:500. The HRP-conjugated anti-mouse IgG antibody (GTx213111-01) was used to detect the primary antibody.


GTx70222 WB Image

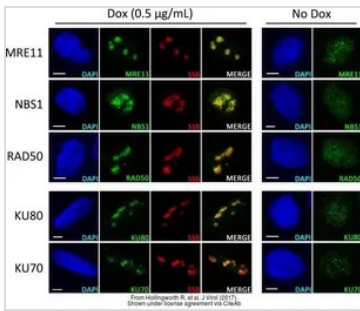
Sample (50 ug of whole cell lysate)
A: mouse brain
7.5% SDS PAGE
GTx70222 diluted at 1:1000


GTx70222 ICC/IF Image

Immunofluorescence analysis of HeLa, using NBS1(GTx70222) antibody at 1:100 dilution.

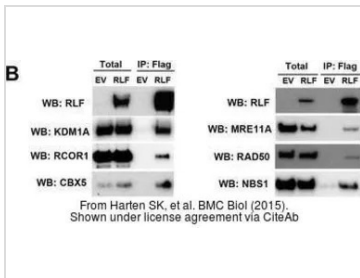


For full product information, images and publications, please visit our [website](http://www.genetex.com).



GTx70222 ICC/IF Image

The data was published in the journal J Virol in 2017. [PMID: 28855246](https://pubmed.ncbi.nlm.nih.gov/28855246/)



GTx70222 WB Image

The data was published in the journal BMC Biol in 2015. [PMID: 25857663](https://pubmed.ncbi.nlm.nih.gov/25857663/)



For full product information, images and publications, please visit our [website](https://www.genetex.com).

Rad50 antibody [13B3]

Cat. No. GTX70228

宿主	Mouse
克隆	Monoclonal
同种型	IgG1
实验应用	WB, ICC/IF, IHC-P, IP, ChIP assay, IHC, in vitro, PLA
种属反应	Human, Mouse, Rat, Monkey

引用文献 (122)

产品说明

摘要

Rad50 antibody detects RAD50, a ~154 kDa protein that, together with MRE11 and NBS1, forms the MRN complex that is intimately involved in DNA damage signaling, DNA double-strand break (DSB) repair, recombination, and replication. The complex is also involved other facets of genomic homeostasis including telomere maintenance. MRN plays a pivotal role in the DNA damage response (DDR) through interactions with ATM and ATR.

实验应用

应用说明

*最佳稀释倍数与浓度应由研究人员确认

Suggested dilution	Recommended dilution
WB	1:500-1:3000
ICC/IF	1:100-1:1000
IHC-P	1:100-1:1000
IP	Assay dependent
ChIP assay	Assay dependent
IHC	Assay dependent
in vitro	Assay dependent
PLA	Assay dependent

以下为常规应用缩写的中文注解

WB: 免疫印迹

ICC/IF: 细胞染色

IHC-P: 石蜡切片

IHC-Fr: 冰冻切片

属性

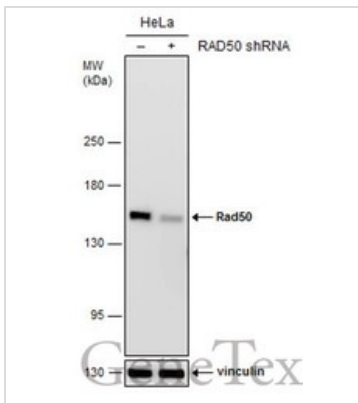
形式	Liquid
存储溶液	PBS
保存剂	No preservative



For full product information, images and publications, please visit our [website](#).

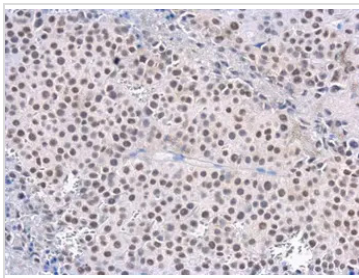
存放说明	Store as concentrated solution. Centrifuge briefly prior to opening vial. For short-term storage (1-2 weeks), store at 4°C. For long-term storage, aliquot and store at -20°C or below. Avoid multiple freeze-thaw cycles.
浓度	1.7 mg/ml (Please refer to the vial label for the specific concentration.)
偶联	Unconjugated
RRID	AB_372854
注意事项	仅供实验室使用。不适用于人类或动物的任何临床、治疗或诊断用途。不适合动物或人类食用。

產品图片



GTX70228 WB Image

Non-transfected (-) and transfected (+) HeLa whole cell extracts (30 µg) were separated by 5% SDS-PAGE, and the membrane was blotted with Rad50 antibody [13B3] (GTX70228) diluted at 1:500. The HRP-conjugated anti-mouse IgG antibody (GTX213111-01) was used to detect the primary antibody.



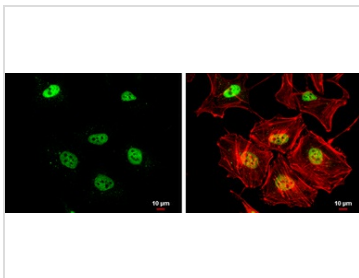
GTX70228 IHC-P Image

Rad50 antibody [13B3] detects Rad50 protein at nucleus in CAL 27 xenograft by immunohistochemical analysis.

Sample: Paraffin-embedded CAL 27 xenograft.

Rad50 antibody [13B3] (GTX70228) diluted at 1:200.

Antigen Retrieval: Citrate buffer, pH 6.0, 15 min



GTX70228 ICC/IF Image

Rad50 antibody [13B3] detects Rad50 protein at nucleus by immunofluorescent analysis.

Sample: HeLa cells were fixed in 4% paraformaldehyde at RT for 15 min.

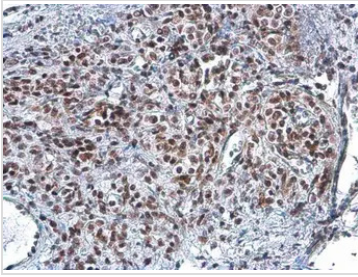
Green: Rad50 protein stained by Rad50 antibody [13B3] (GTX70228) diluted at 1:200.

Red: phalloidin, a cytoskeleton marker, diluted at 1:200.

Scale bar = 10 µm.



For full product information, images and publications, please visit our [website](https://www.genetex.com).



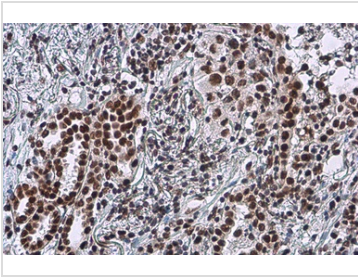
GTx70228 IHC-P Image

Rad50 antibody [13B3] detects Rad50 protein at nucleus by immunohistochemical analysis.

Sample: Paraffin-embedded human lung cancer.

Rad50 stained by Rad50 antibody [13B3] (GTx70228) diluted at 1:100.

Antigen Retrieval: Citrate buffer, pH 6.0, 15 min



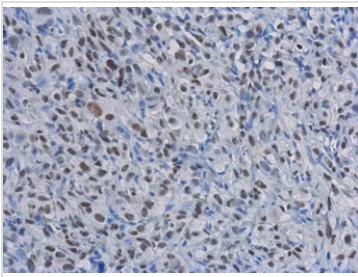
GTx70228 IHC-P Image

Rad50 antibody [13B3] detects Rad50 protein at nucleus by immunohistochemical analysis.

Sample: Paraffin-embedded human lung cancer.

Rad50 stained by Rad50 antibody [13B3] (GTx70228) diluted at 1:100.

Antigen Retrieval: Citrate buffer, pH 6.0, 15 min



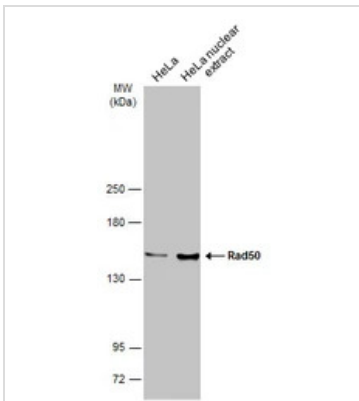
GTx70228 IHC-P Image

Rad50 antibody [13B3] detects Rad50 protein at nucleus in PC-3 xenograft by immunohistochemical analysis.

Sample: Paraffin-embedded PC-3 xenograft.

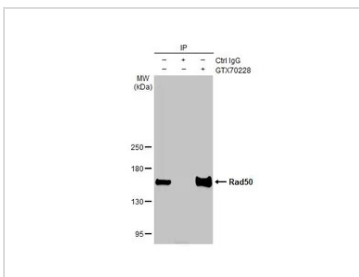
Rad50 antibody [13B3] (GTx70228) diluted at 1:200.

Antigen Retrieval: Citrate buffer, pH 6.0, 15 min



GTx70228 WB Image

HeLa whole cell and nuclear extracts (30 µg) were separated by 5% SDS-PAGE, and the membrane was blotted with Rad50 antibody [13B3] (GTx70228) diluted at 1:1000. The HRP-conjugated anti-mouse IgG antibody (GTx213111-01) was used to detect the primary antibody.



GTx70228 IP Image

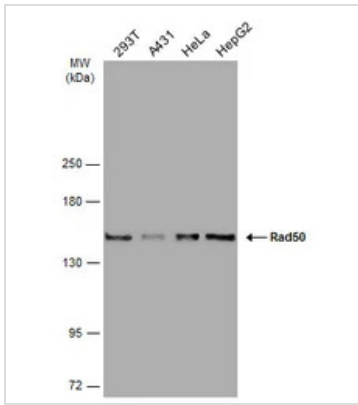
Immunoprecipitation of Rad50 protein from NT2D1 whole cell extract using 5 µg of Rad50 antibody [13B3] (GTx70228).

Western blot analysis was performed using Rad50 antibody [13B3] (GTx70228).

EasyBlot HRP-conjugated anti mouse IgG antibody (GTx221667-01).

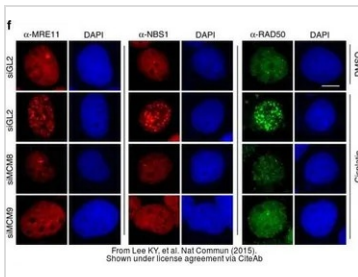


For full product information, images and publications, please visit our [website](https://www.genetex.com).



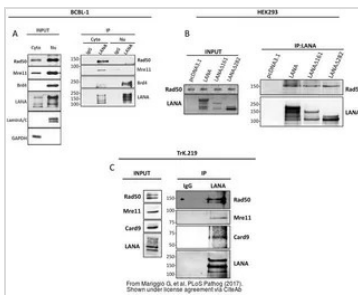
GTX70228 WB Image

Various whole cell extracts (30 μ g) were separated by 5% SDS-PAGE, and the membrane was blotted with Rad50 antibody [13B3] (GTX70228) diluted at 1:1000. The HRP-conjugated anti-mouse IgG antibody (GTX213111-01) was used to detect the primary antibody.



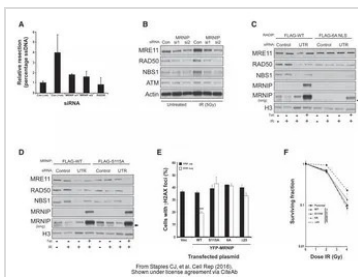
GTX70228 ICC/IF Image

The data was published in the journal Nat Commun in 2015. [PMID: 26215093](#)



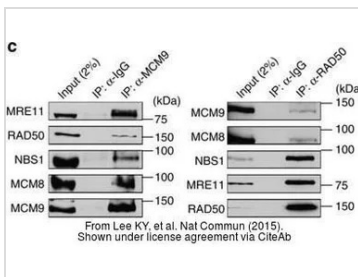
GTX70228 WB Image

The data was published in the journal PLoS Pathog in 2017. [PMID: 28430817](#)



GTX70228 WB Image

The data was published in the journal Cell Rep in 2016. [PMID: 27568553](#)

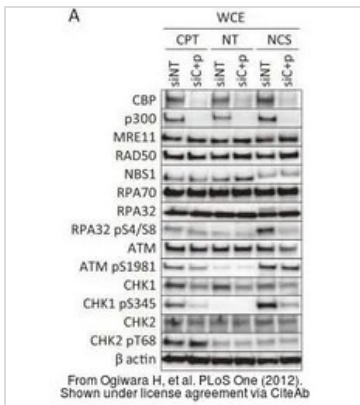


GTX70228 WB Image

The data was published in the journal Nat Commun in 2015. [PMID: 26215093](#)

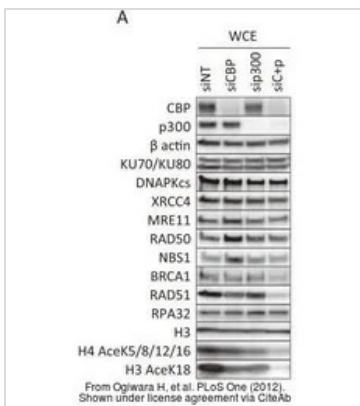


For full product information, images and publications, please visit our [website](#).



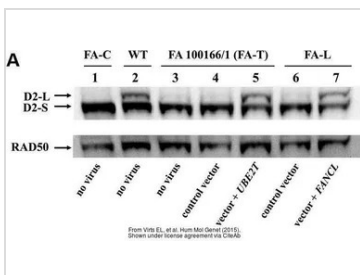
GTx70228 WB Image

The data was published in the journal PLoS One in 2012. [PMID: 23285190](#)



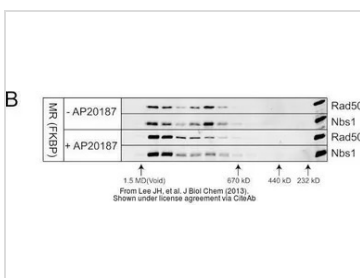
GTx70228 WB Image

The data was published in the journal PLoS One in 2012. [PMID: 23285190](#)



GTx70228 WB Image

The data was published in the journal Hum Mol Genet in 2015. [PMID: 26085575](#)

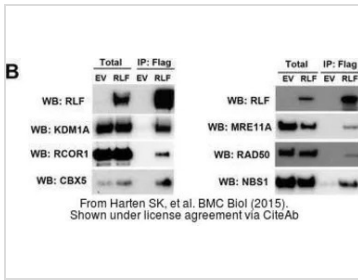


GTx70228 WB Image

The data was published in the journal J Biol Chem in 2013. [PMID: 23525106](#)

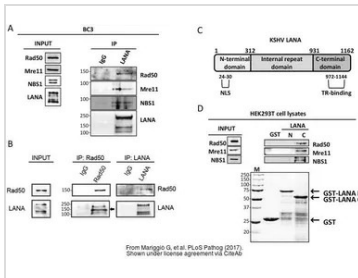


For full product information, images and publications, please visit our [website](#).



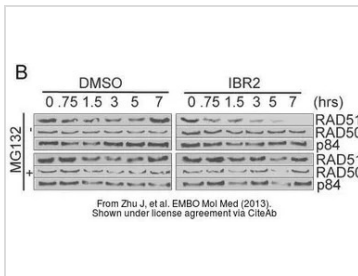
GTx70228 WB Image

The data was published in the journal BMC Biol in 2015. [PMID: 25857663](#)



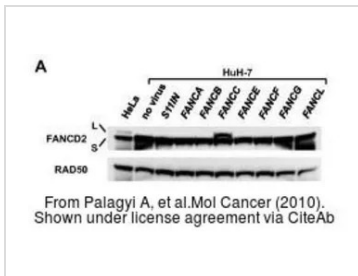
GTx70228 WB IP Image

The data was published in the journal PLoS Pathog in 2017. [PMID: 28430817](#)



GTx70228 WB Image

The data was published in the journal EMBO Mol Med in 2013. [PMID: 23341130](#)



GTx70228 WB Image

The data was published in the journal Mol Cancer in 2010. [PMID: 20509860](#)



For full product information, images and publications, please visit our [website](#).

Ku80 antibody [149.8]

Cat. No. GTX70276

宿主	Mouse
克隆	Monoclonal
同种型	IgG1
实验应用	WB, ICC/IF
种属反应	Human, Monkey

引用文献 (2)

实验应用

应用说明

*最佳稀释倍数与浓度应由研究人员确认

Suggested dilution	Recommended dilution
WB	1:1000-1:10000
ICC/IF	1:100-1:1000

以下为常规应用缩写的中文注解

WB: 免疫印迹

ICC/IF: 细胞染色

IHC-P: 石蜡切片

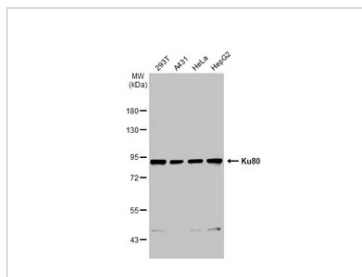
IHC-Fr: 冰冻切片

属性

形式	Liquid
存储溶液	PBS
保存剂	No preservative
存放说明	Store as concentrated solution. Centrifuge briefly prior to opening vial. For short-term storage (1-2 weeks), store at 4°C. For long-term storage, aliquot and store at -20°C or below. Avoid multiple freeze-thaw cycles.
浓度	1 mg/ml (Please refer to the vial label for the specific concentration.)
偶联	Unconjugated
RRID	AB_372053
注意事项	仅供实验室使用。不适用于人类或动物的任何临床、治疗或诊断用途。不适合动物或人类食用。

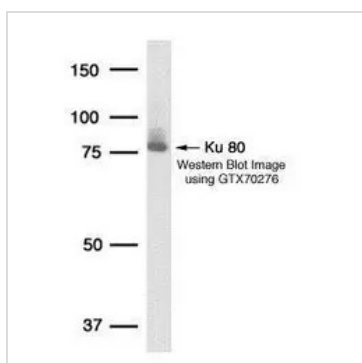
For full product information, images and publications, please visit our [website](#).

產品圖片



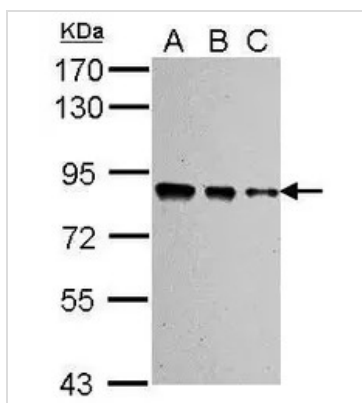
GTx70276 WB Image

Various whole cell extracts (30 µg) were separated by 7.5% SDS-PAGE, and the membrane was blotted with Ku80 antibody [149.8] (GTx70276) diluted at 1:1000. The HRP-conjugated anti-mouse IgG antibody (GTx213111-01) was used to detect the primary antibody.



GTx70276 WB Image

Detection of human Ku80 protein in HeLa whole cell lysate using GeneTex Ku80 149.8 monoclonal antibody GTx70276.



GTx70276 WB Image

Sample (whole cell lysate)

A: 293T 20µg

B: 293T 10µg

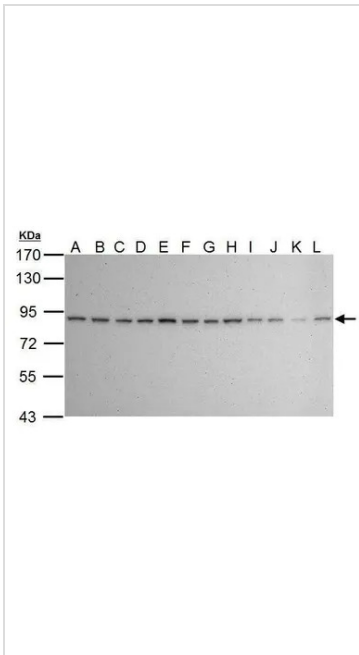
C: 293T 5µg

7.5% SDS PAGE

GTx70276 diluted at 1:10000



For full product information, images and publications, please visit our [website](https://www.genetex.com).



GTX70276 WB Image

Sample (30 ug of whole cell lysate)

A: Jurkat

B: Raji

C: 293T

D: A431

E: HeLa

F: HepG2

G: H1299

H: HCT116

I: MCF-7

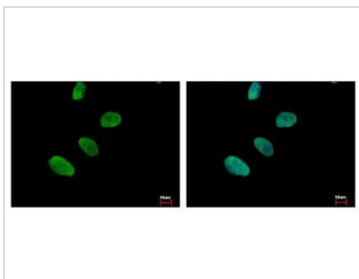
J: NT2D1

K: PC-3

L: U87-MG

7.5% SDS PAGE

GTX70276 diluted at 1:10000



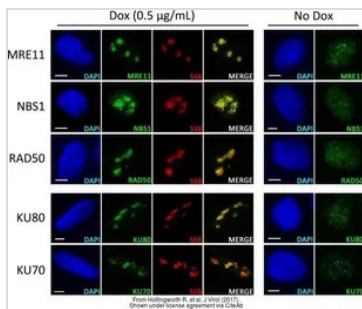
GTX70276 ICC/IF Image

Ku80 antibody [149.8] detects Ku80 protein at nucleus by immunofluorescent analysis.

Sample: HeLa cells were fixed in 4% paraformaldehyde at RT for 15 min.

Green: Ku80 protein stained by Ku80 antibody [149.8] (GTX70276) diluted at 1:500.

Blue: Hoechst 33343 staining.

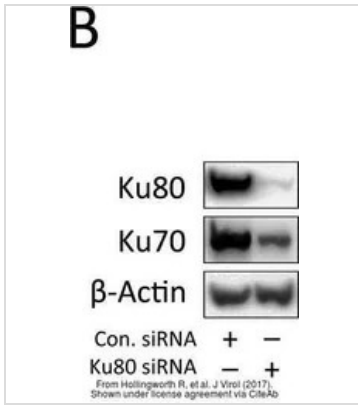


GTX70276 ICC/IF Image

The data was published in the journal J Virol in 2017. [PMID: 28855246](https://pubmed.ncbi.nlm.nih.gov/28855246/)



For full product information, images and publications, please visit our [website](https://www.genetex.com).



GTX70276 WB Image

The data was published in the journal J Virol in 2017. [PMID: 28855246](https://pubmed.ncbi.nlm.nih.gov/28855246/)



For full product information, images and publications, please visit our [website](https://www.genetex.com).