

GTX300098

TET Family Antibody Panel

Product Content

Cat No	Product Name	种属反应	实验应用	Package
GTX124207	TET1 antibody [N3C1]	Human, Mouse, Rat, Monkey	WB, ICC/IF, IHC-P, IHC-Wm, IP, ChIP assay, IHC	25 µl
GTX213110-01	Goat Anti-Rabbit IgG antibody (HRP)	Rabbit	WB, IHC-P, ELISA	25 µl
GTX638781	TET3 antibody [HL2463]	Human, Mouse, Rat	WB, IHC-P	25 µl
GTX640093	TET2 antibody [HL2822]	Human	WB	25 µl

注意事项

For In vitro laboratory use only. Not for any clinical, therapeutic, or diagnostic use in humans or animals. Not for animal or human consumption.



For full product information, images and publications, please visit our [website](#).

TET1 antibody [N3C1]

Cat. No. GTX124207

宿主	Rabbit
克隆	Polyclonal
同种型	IgG
实验应用	WB, ICC/IF, IHC-P, IHC-Wm, IP, ChIP assay, IHC
种属反应	Human, Mouse, Rat, Monkey

引用文献 (78)

★★★★★ 产品评论 (2)

产品说明

摘要

TET1 antibody recognizes TET1 protein, which is a methylcytosine dioxygenase that catalyzes the sequential steps of DNA demethylation. Expression of TET1 protein is spatiotemporally regulated during embryonic development. Abnormal TET1 activation is associated with cancer growth and metastasis.

实验应用

应用说明

*最佳稀释倍数与浓度应由研究人员确认

Suggested dilution	Recommended dilution
WB	1:500-1:3000
ICC/IF	1:100-1:1000
IHC-P	1:100-1:1000
IHC-Wm	Assay dependent
IP	Assay dependent
ChIP assay	Assay dependent
IHC	Assay dependent

以下为常规应用缩写的中文注解

WB: 免疫印迹

ICC/IF: 细胞染色

IHC-P: 石蜡切片

IHC-Fr: 冰冻切片

属性

形式	Liquid
存储溶液	PBS, 20% Glycerol
保存剂	0.025% ProClin 300
存放说明	Store as concentrated solution. Centrifuge briefly prior to opening vial. For short-term storage (1-2 weeks), store at 4°C. For long-term storage, aliquot and store at -20°C or below. Avoid multiple freeze-thaw cycles.
浓度	1.45 mg/ml (Please refer to the vial label for the specific concentration.)

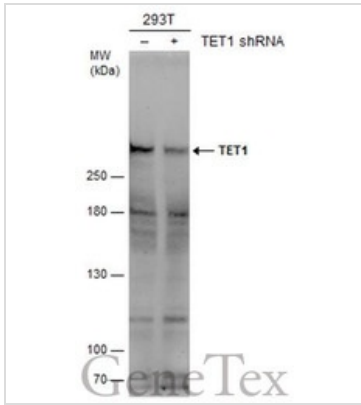


For full product information, images and publications, please visit our [website](#).

Date 2026 / 05 / 13 Page 2 of 17

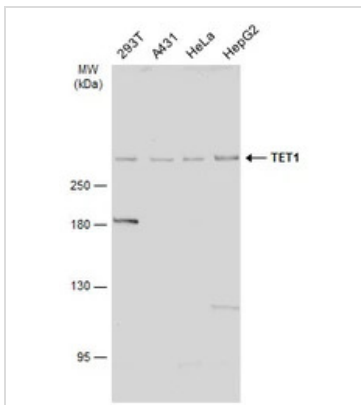
偶联	Unconjugated
RRID	AB_11176491
注意事项	仅供实验室使用。不适用于人类或动物的任何临床、治疗或诊断用途。不适合动物或人类食用。

產品图片



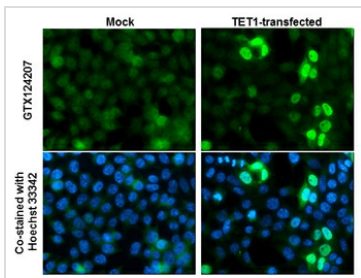
GTX124207 WB Image

Non-transfected (-) and transfected (+) 293T whole cell extracts (50 µg) were separated by 5% SDS-PAGE, and the membrane was blotted with TET1 antibody [N3C1] (GTX124207) diluted at 1:1000. The HRP-conjugated anti-rabbit IgG antibody (GTX213110-01) was used to detect the primary antibody.



GTX124207 WB Image

Various whole cell extracts (30 µg) were separated by 5% SDS-PAGE, and the membrane was blotted with TET1 antibody [N3C1] (GTX124207) diluted at 1:2000. The HRP-conjugated anti-rabbit IgG antibody (GTX213110-01) was used to detect the primary antibody.

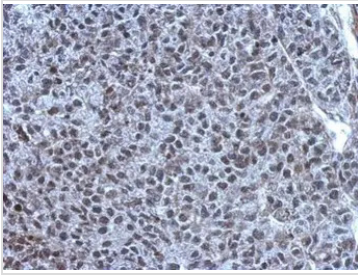


GTX124207 ICC/IF Image

TET1 antibody [N3C1] detects TET1 protein at nucleus by immunofluorescent analysis.
 Sample: Mock and transfected 293T cells were fixed in 4% paraformaldehyde at RT for 15 min.
 Green: TET1 stained by TET1 antibody [N3C1] (GTX124207) diluted at 1:1000.
 Blue: Hoechst 33342 staining.

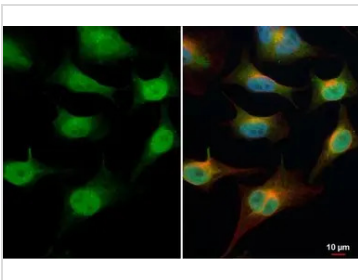


For full product information, images and publications, please visit our [website](#).

**GTX124207 IHC-P Image**

Immunohistochemical analysis of paraffin-embedded HeLa xenograft, using TET1 (GTX124207) antibody at 1:1000 dilution.

Antigen Retrieval: Trilogy™ (EDTA based, pH 8.0) buffer, 15min

**GTX124207 ICC/IF Image**

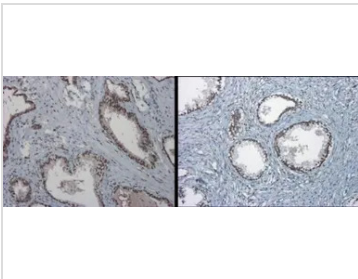
TET1 antibody [N3C1] detects TET1 protein at cytoplasm and nucleus by immunofluorescent analysis.

Sample: HeLa cells were fixed in 4% paraformaldehyde at RT for 15 min.

Green: TET1 stained by TET1 antibody [N3C1] (GTX124207) diluted at 1:500.

Red: alpha Tubulin, a cytoskeleton marker, stained by alpha Tubulin antibody [GT114] (GTX628802) diluted at 1:1000.

Blue: Fluoroshield with DAPI (GTX30920).

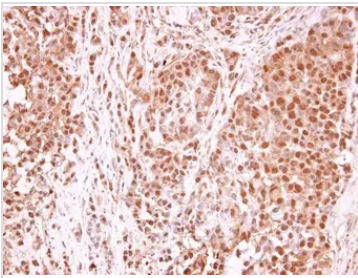
**GTX124207 IHC-P Image**

TET1 antibody [N3C1] detects TET1 protein at nucleus on Human normal prostate tissue by immunohistochemical analysis.

Sample: Paraffin-embedded Human normal prostate tissue.

TET1 antibody [N3C1] (GTX124207) dilution: 1:1000.

Antigen Retrieval: Trilogy™ (EDTA based, pH 8.0) buffer, 15min

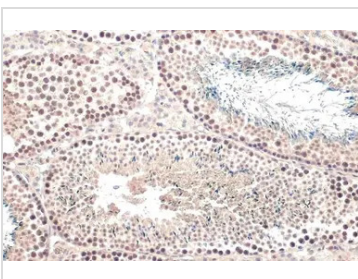
**GTX124207 IHC-P Image**

TET1 antibody [N3C1] detects TET1 protein at nucleus in human A549 xenograft by immunohistochemical analysis.

Sample: Paraffin-embedded human A549 xenograft .

TET1 antibody [N3C1] (GTX124207) diluted at 1:250.

Antigen Retrieval: Trilogy™ (EDTA based, pH 8.0) buffer, 15min

**GTX124207 IHC-P Image**

TET1 antibody [N3C1] detects TET1 protein at nucleus by immunohistochemical analysis.

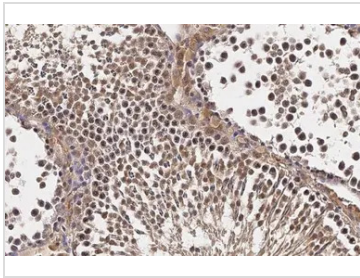
Sample: Paraffin-embedded mouse testis.

TET1 stained by TET1 antibody [N3C1] (GTX124207) diluted at 1:500.

Antigen Retrieval: Citrate buffer, pH 6.0, 15 min

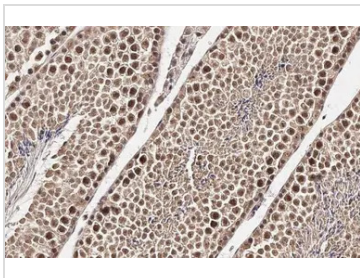


For full product information, images and publications, please visit our [website](#).



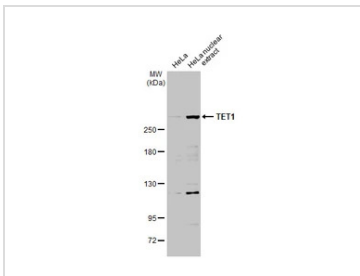
GTX124207 IHC-P Image

TET1 antibody [N3C1] detects TET1 protein at nucleus by immunohistochemical analysis.
 Sample: Paraffin-embedded rat testis.
 TET1 stained by TET1 antibody [N3C1] (GTX124207) diluted at 1:500.
 Antigen Retrieval: Citrate buffer, pH 6.0, 15 min



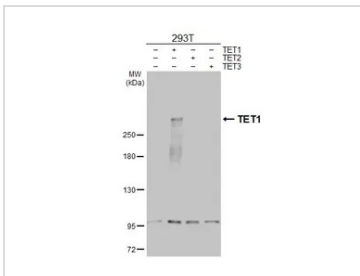
GTX124207 IHC-P Image

TET1 antibody [N3C1] detects TET1 protein at nucleus by immunohistochemical analysis.
 Sample: Paraffin-embedded mouse testis.
 TET1 stained by TET1 antibody [N3C1] (GTX124207) diluted at 1:500.
 Antigen Retrieval: Citrate buffer, pH 6.0, 15 min



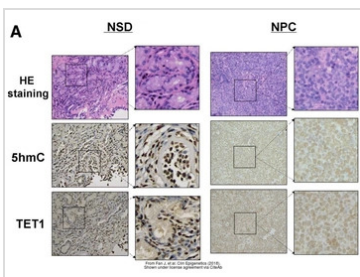
GTX124207 WB Image

HeLa whole cell and nuclear extracts (30 µg) were separated by 5% SDS-PAGE, and the membrane was blotted with TET1 antibody [N3C1] (GTX124207) diluted at 1:1000. The HRP-conjugated anti-rabbit IgG antibody (GTX213110-01) was used to detect the primary antibody.



GTX124207 WB Image

Non-transfected (-) and transfected (+) 293T whole cell extracts (30 µg) were separated by 5% SDS-PAGE, and the membrane was blotted with TET1 antibody [N3C1] (GTX124207) diluted at 1:5000. The HRP-conjugated anti-rabbit IgG antibody (GTX213110-01) was used to detect the primary antibody.

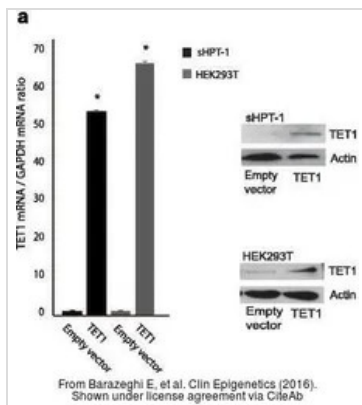


GTX124207 IHC-P Image

The data was published in the journal Clin Epigenetics in 2018. [PMID: 30075814](https://pubmed.ncbi.nlm.nih.gov/30075814/)

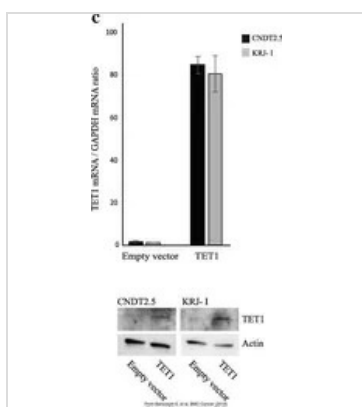


For full product information, images and publications, please visit our [website](http://www.genetex.com).



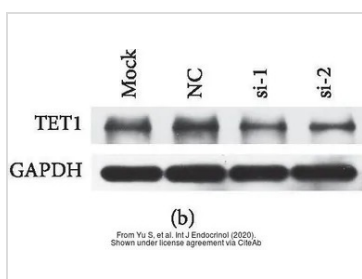
GTx124207 WB Image

The data was published in the journal Clin Epigenetics in 2016. [PMID: 26973719](https://pubmed.ncbi.nlm.nih.gov/26973719/)



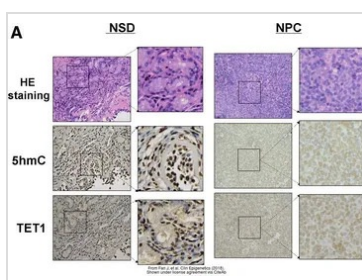
GTx124207 WB Image

The data was published in the journal BMC Cancer in 2018. [PMID: 30045709](https://pubmed.ncbi.nlm.nih.gov/30045709/)



GTx124207 WB Image

The data was published in the journal Int J Endocrinol in 2020. [PMID: 32089682](https://pubmed.ncbi.nlm.nih.gov/32089682/)

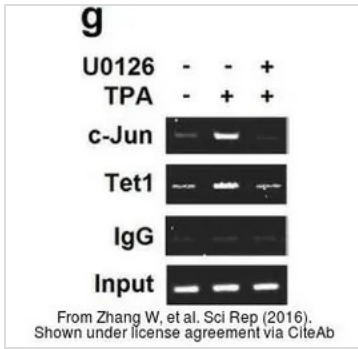


GTx124207 IHC Image

The data was published in the journal Clin Epigenetics in 2018. [PMID: 30075814](https://pubmed.ncbi.nlm.nih.gov/30075814/)

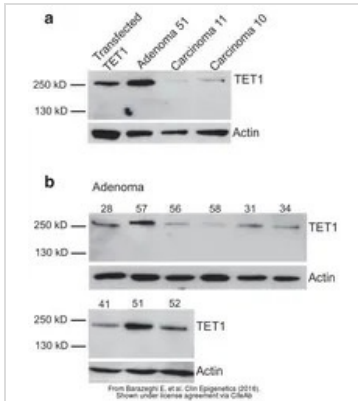


For full product information, images and publications, please visit our [website](https://www.genetex.com).



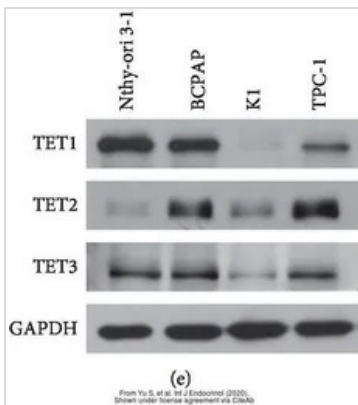
GTX124207 ChIP assay Image

The data was published in the journal Sci Rep in 2016. [PMID: 27708396](https://pubmed.ncbi.nlm.nih.gov/27708396/)



GTX124207 WB Image

The data was published in the journal Clin Epigenetics in 2016. [PMID: 26973719](https://pubmed.ncbi.nlm.nih.gov/26973719/)



GTX124207 WB Image

The data was published in the journal Int J Endocrinol in 2020. [PMID: 32089682](https://pubmed.ncbi.nlm.nih.gov/32089682/)



For full product information, images and publications, please visit our [website](https://www.genetex.com).

Goat Anti-Rabbit IgG antibody (HRP)

Cat. No. GTX213110-01

宿主	Goat
克隆	Polyclonal
同种型	IgG
实验应用	WB, IHC-P, ELISA
种属反应	Rabbit

引用文献 (637)
Package
1 ml

实验应用

应用说明

*最佳稀释倍数与浓度应由研究人员确认

Suggested dilution	Recommended dilution
WB	1:5000-1:20000
IHC-P	1:100-1:1000
ELISA	1:5000-1:20000

以下为常规应用缩写的中文注解

WB: 免疫印迹

ICC/IF: 细胞染色

IHC-P: 石蜡切片

IHC-Fr: 冰冻切片

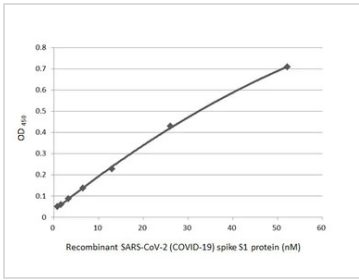
属性

形式	Liquid
存储溶液	0.05M Tris, 0.15M NaCl
保存剂	0.025% ProClin 300
存放说明	Store as concentrated solution. Centrifuge briefly prior to opening vial. For short-term storage (1-2 weeks), store at 4°C. For long-term storage, aliquot and store at -20°C or below. Avoid multiple freeze-thaw cycles.
浓度	0.2 mg/ml (Please refer to the vial label for the specific concentration.)
免疫原	Highly purified whole rabbit IgG
纯化方式	Purified by antigen-affinity chromatography.
偶联	Horseradish peroxidase(HRP)
RRID	AB_10618573
注意事项	仅供实验室使用。不适用于人类或动物的任何临床, 治疗或诊断用途。不适合动物或人类食用。



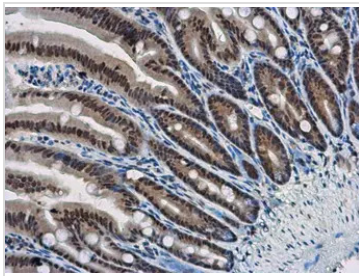
For full product information, images and publications, please visit our [website](#).

產品圖片



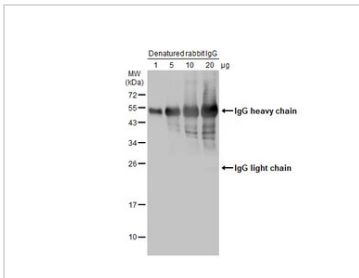
GTX213110-01 ELISA Image

Indirect ELISA analysis performed by coating plate with recombinant SARS-CoV-2 (COVID-19) Spike S1 protein, His tag (active) (GTX135817-pro) (52.15-0.81 nM). Coated protein was probed with SARS-CoV-2 (COVID-19) Spike S1 antibody [HL134] (GTX635671) (1 µg/mL). Goat anti-rabbit IgG antibody (HRP) (GTX213110-01) (1:10000) was used to detect bound primary antibody.



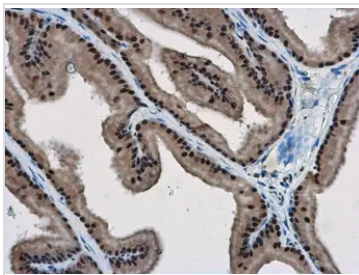
GTX213110-01 IHC-P Image

WBP11 antibody detects WBP11 protein at nucleus in mouse intestine by immunohistochemical analysis. Sample: Paraffin-embedded mouse intestine. WBP11 antibody (GTX118654) diluted at 1:500. The signal was developed by Rabbit IgG antibody (HRP) (GTX213110-01) Antigen Retrieval: Citrate buffer, pH 6.0, 15 min



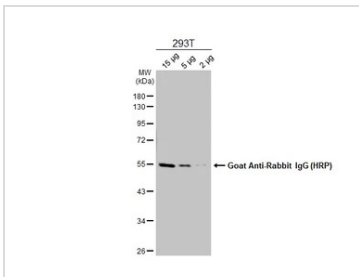
GTX213110-01 WB Image

Various amounts of denatured rabbit IgG protein were separated by 12% SDS-PAGE, and the membrane was blotted with HRP-conjugated anti-rabbit IgG antibody (GTX213110-01) diluted at 1:5000.



GTX213110-01 IHC-P Image

WBP11 antibody detects WBP11 protein at nucleus in rat prostate by immunohistochemical analysis. Sample: Paraffin-embedded rat prostate. WBP11 antibody (GTX118654) diluted at 1:500. The signal was developed by Rabbit IgG antibody (HRP) (GTX213110-01). Antigen Retrieval: Citrate buffer, pH 6.0, 15 min

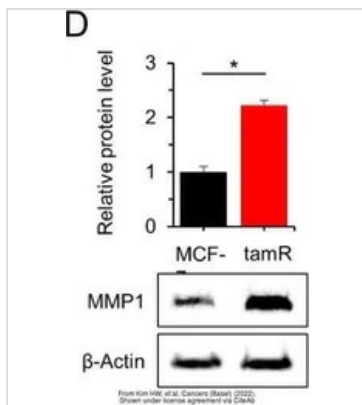


GTX213110-01 WB Image

Various whole cell extracts were separated by 10% SDS-PAGE, and the membrane was blotted with alpha Tubulin antibody (GTX112141) diluted at 1:10000. The HRP-conjugated anti-rabbit IgG antibody (GTX213110-01) was used to detect the primary antibody.

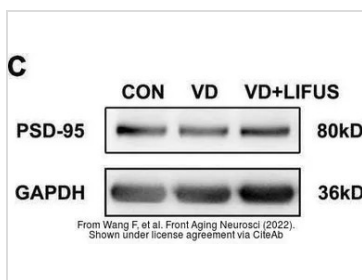


For full product information, images and publications, please visit our [website](#).



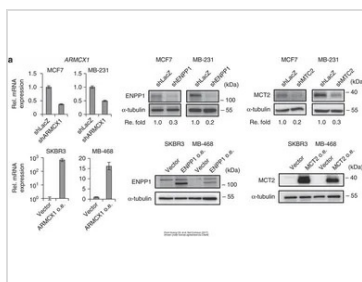
GTx213110-01 WB Image

The data was published in the 2022 in Cancers (Basel). [PMID: 35267540](https://pubmed.ncbi.nlm.nih.gov/35267540/)



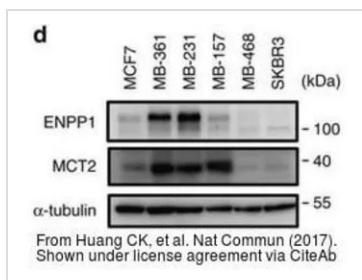
GTx213110-01 WB Image

The data was published in the 2022 in Front Aging Neurosci. [PMID: 35264943](https://pubmed.ncbi.nlm.nih.gov/35264943/)



GTx213110-01 WB Image

The data was published in the 2017 in Nat Commun. [PMID: 28281525](https://pubmed.ncbi.nlm.nih.gov/28281525/)

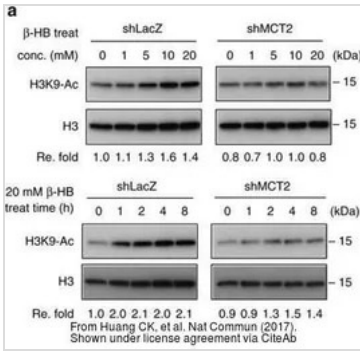


GTx213110-01 WB Image

The data was published in the 2017 in Nat Commun. [PMID: 28281525](https://pubmed.ncbi.nlm.nih.gov/28281525/)

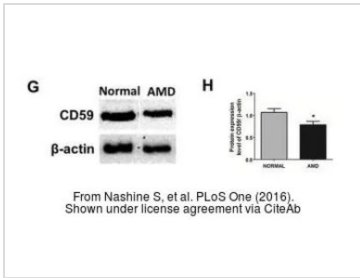


For full product information, images and publications, please visit our [website](https://www.genetex.com).



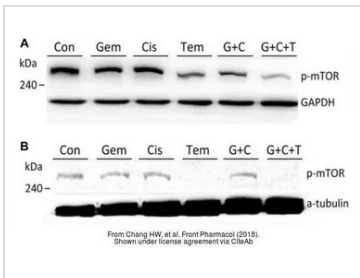
GTx213110-01 WB Image

The data was published in the 2017 in Nat Commun. [PMID: 28281525](https://pubmed.ncbi.nlm.nih.gov/28281525/)



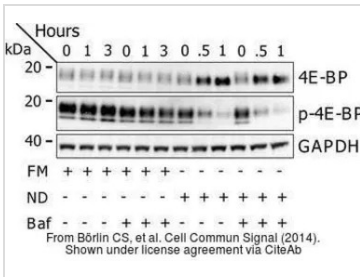
GTx213110-01 WB Image

The data was published in the 2016 in PLoS One. [PMID: 27486856](https://pubmed.ncbi.nlm.nih.gov/27486856/)



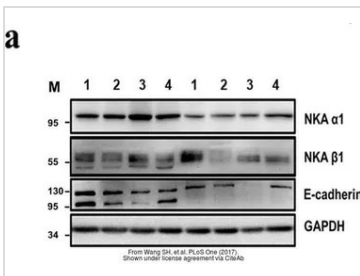
GTx213110-01 WB Image

The data was published in the journal Front Pharmacol in 2018. [PMID: 30087612](https://pubmed.ncbi.nlm.nih.gov/30087612/)



GTx213110-01 WB Image

The data was published in the journal Cell Commun Signal in 2014. [PMID: 25214434](https://pubmed.ncbi.nlm.nih.gov/25214434/)

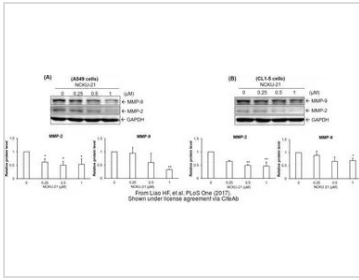


GTx213110-01 WB Image

The data was published in the journal PLoS One in 2017. [PMID: 28832634](https://pubmed.ncbi.nlm.nih.gov/28832634/)

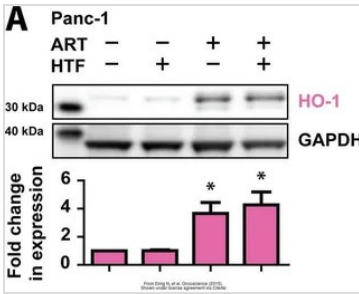


For full product information, images and publications, please visit our [website](http://www.genetex.com).



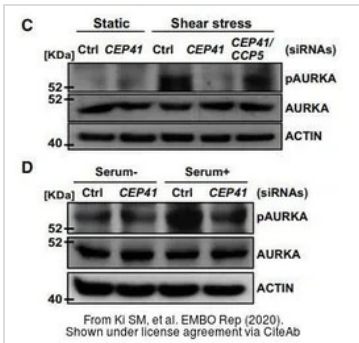
GTX213110-01 WB Image

The data was published in the journal PLoS One in 2017. [PMID: 28945763](https://pubmed.ncbi.nlm.nih.gov/28945763/)



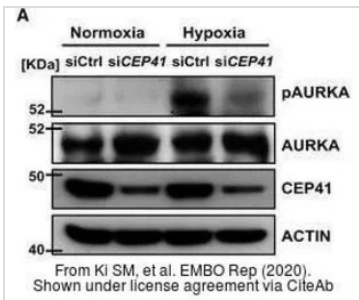
GTX213110-01 WB Image

The data was published in the journal Oncoscience in 2015. [PMID: 26097885](https://pubmed.ncbi.nlm.nih.gov/26097885/)



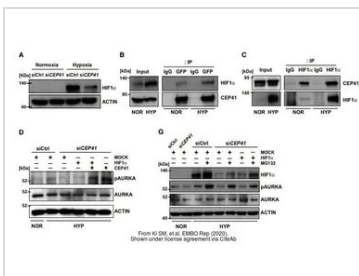
GTX213110-01 WB Image

The data was published in the journal EMBO Rep in 2020. [PMID: 31885126](https://pubmed.ncbi.nlm.nih.gov/31885126/)



GTX213110-01 WB Image

The data was published in the journal EMBO Rep in 2020. [PMID: 31885126](https://pubmed.ncbi.nlm.nih.gov/31885126/)



GTX213110-01 WB Image

The data was published in the journal EMBO Rep in 2020. [PMID: 31885126](https://pubmed.ncbi.nlm.nih.gov/31885126/)



For full product information, images and publications, please visit our [website](https://www.genetex.com).

TET3 antibody [HL2463]

Cat. No. GTX638781

宿主	Rabbit
克隆	Monoclonal
同种型	IgG
实验应用	WB, IHC-P
种属反应	Human, Mouse, Rat

实验应用

应用说明

*最佳稀释倍数与浓度应由研究人员确认

Suggested dilution	Recommended dilution
WB	1:500-1:3000
IHC-P	Assay dependent

以下为常规应用缩写的中文注解

WB: 免疫印迹

ICC/IF: 细胞染色

IHC-P: 石蜡切片

IHC-Fr: 冰冻切片

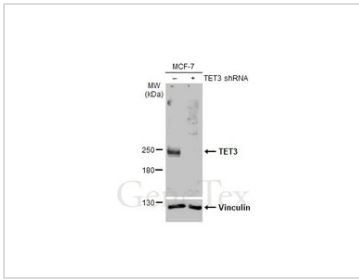
属性

形式	Liquid
存储溶液	PBS
保存剂	No preservatives
存放说明	Store as concentrated solution. Centrifuge briefly prior to opening vial. For short-term storage (1-2 weeks), store at 4°C. For long-term storage, aliquot and store at -20°C or below. Avoid multiple freeze-thaw cycles.
浓度	1 mg/ml (Please refer to the vial label for the specific concentration.)
偶联	Unconjugated
注意事项	仅供实验室使用。不适用于人类或动物的任何临床、治疗或诊断用途。不适合动物或人类食用。

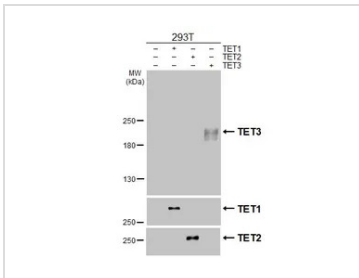


For full product information, images and publications, please visit our [website](#).

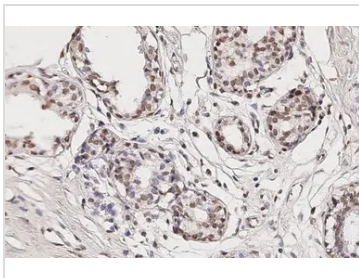
產品圖片

**GTx638781 WB Image**

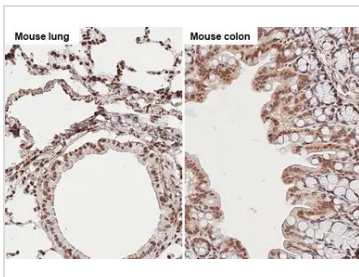
Non-transfected (-) and transfected (+) MCF-7 whole cell extracts (30 µg) were separated by 5% SDS-PAGE, and the membrane was blotted with TET3 antibody [HL2463] (GTx638781) diluted at 1:1000. The HRP-conjugated anti-rabbit IgG antibody (GTx213110-01) was used to detect the primary antibody, and the signal was developed with Trident ECL plus-Enhanced.

**GTx638781 WB Image**

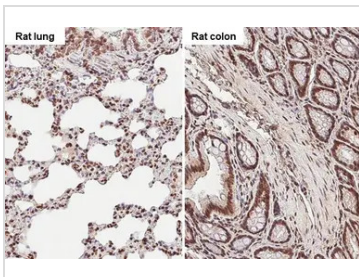
Non-transfected (-) and transfected (+) 293T whole cell extracts (30 µg) were separated by 5% SDS-PAGE, and the membrane was blotted with TET3 antibody [HL2463] (GTx638781) diluted at 1:5000. The HRP-conjugated anti-rabbit IgG antibody (GTx213110-01) was used to detect the primary antibody.

**GTx638781 IHC-P Image**

TET3 antibody [HL2463] detects TET3 protein by immunohistochemical analysis.
Sample: Paraffin-embedded human breast carcinoma.
TET3 stained by TET3 antibody [HL2463] (GTx638781) diluted at 1:100.
Antigen Retrieval: Citrate buffer, pH 6.0, 15 min

**GTx638781 IHC-P Image**

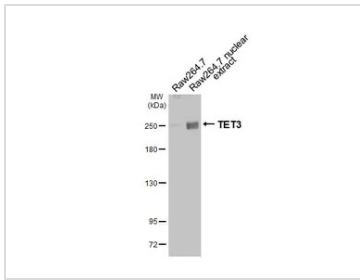
TET3 antibody [HL2463] detects TET3 protein by immunohistochemical analysis.
Sample: Paraffin-embedded mouse tissues.
TET3 stained by TET3 antibody [HL2463] (GTx638781) diluted at 1:100.
Antigen Retrieval: Citrate buffer, pH 6.0, 15 min

**GTx638781 IHC-P Image**

TET3 antibody [HL2463] detects TET3 protein by immunohistochemical analysis.
Sample: Paraffin-embedded rat tissues.
TET3 stained by TET3 antibody [HL2463] (GTx638781) diluted at 1:100.
Antigen Retrieval: Citrate buffer, pH 6.0, 15 min



For full product information, images and publications, please visit our [website](#).


GTX638781 WB Image

Raw264.7 whole cell and nuclear extracts (30 μ g) were separated by 5% SDS-PAGE, and the membrane was blotted with TET3 antibody [HL2463] (GTX638781) diluted at 1:1000. The HRP-conjugated anti-rabbit IgG antibody (GTX213110-01) was used to detect the primary antibody.



For full product information, images and publications, please visit our [website](#).

TET2 antibody [HL2822]

Cat. No. GTX640093

宿主	Rabbit
克隆	Monoclonal
同种型	IgG
实验应用	WB
种属反应	Human

实验应用

应用说明

*最佳稀释倍数与浓度应由研究人员确认

Suggested dilution	Recommended dilution
WB	1:500-1:10000

以下为常规应用缩写的中文注解

WB: 免疫印迹

ICC/IF: 细胞染色

IHC-P: 石蜡切片

IHC-Fr: 冰冻切片

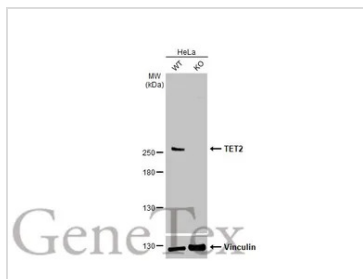
属性

形式	Liquid
存储溶液	PBS
保存剂	No preservatives
存放说明	Store as concentrated solution. Centrifuge briefly prior to opening vial. For short-term storage (1-2 weeks), store at 4°C. For long-term storage, aliquot and store at -20°C or below. Avoid multiple freeze-thaw cycles.
浓度	1 mg/ml (Please refer to the vial label for the specific concentration.)
偶联	Unconjugated
注意事项	仅供实验室使用。不适用于人类或动物的任何临床、治疗或诊断用途。不适合动物或人类食用。



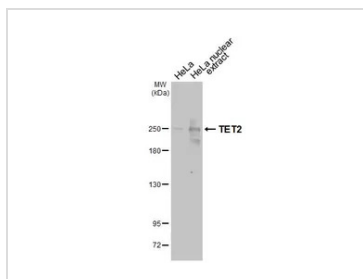
For full product information, images and publications, please visit our [website](#).

產品圖片



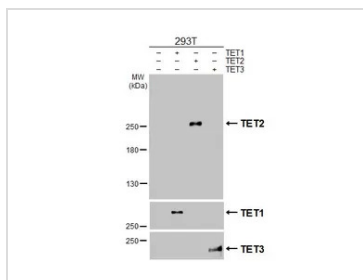
GTX640093 WB Image

Wild-type (WT) and TET2 knockout (KO) HeLa cell extracts (30 µg) were separated by 5% SDS-PAGE, and the membrane was blotted with TET2 antibody [HL2822] (GTX640093) diluted at 1:1000. The HRP-conjugated anti-rabbit IgG antibody (GTX213110-01) was used to detect the primary antibody, and the signal was developed with Trident ECL plus-Enhanced.



GTX640093 WB Image

HeLa whole cell and nuclear extracts (30 µg) were separated by 5% SDS-PAGE, and the membrane was blotted with TET2 antibody [HL2822] (GTX640093) diluted at 1:1000. The HRP-conjugated anti-rabbit IgG antibody (GTX213110-01) was used to detect the primary antibody, and the signal was developed with Trident ECL plus-Enhanced.



GTX640093 WB Image

Non-transfected (-) and transfected (+) 293T whole cell extracts (30 µg) were separated by 5% SDS-PAGE, and the membrane was blotted with TET2 antibody [HL2822] (GTX640093) diluted at 1:5000. The HRP-conjugated anti-rabbit IgG antibody (GTX213110-01) was used to detect the primary antibody.



For full product information, images and publications, please visit our [website](#).