

## PTPRE antibody

Cat. No. GTX32824

|      |                   |
|------|-------------------|
| 宿主   | Rabbit            |
| 克隆   | Polyclonal        |
| 同种型  | IgG               |
| 实验应用 | WB, IHC-P         |
| 种属反应 | Human, Mouse, Rat |

## 实验应用

## 应用说明

\*最佳稀释倍数与浓度应由研究人员确认

| Suggested dilution | Recommended dilution |
|--------------------|----------------------|
| WB                 | 1:500 - 1:2000       |
| IHC-P              | 1:50 - 1:200         |

以下为常规应用缩写的中文注解

WB: 免疫印迹

ICC/IF: 细胞染色

IHC-P: 石蜡切片

IHC-Fr: 冰冻切片

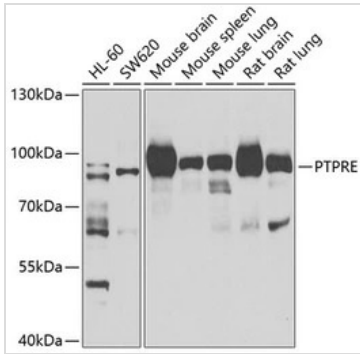
## 属性

|      |  |
|------|--|
| 形式   | Liquid   |
| 存储溶液 | PBS, 50% Glycerol  |
| 保存剂  | 0.02% Sodium azide   |
| 存放说明 | Store as concentrated solution. Centrifuge briefly prior to opening vial. For short-term storage (1-2 weeks), store at 4°C. For long-term storage, aliquot and store at -20°C or below. Avoid multiple freeze-thaw cycles. |
| 浓度   | Batch dependent (Please refer to the vial label for the specific concentration.)   |
| 偶联   | Unconjugated   |
| 注意事项 | 仅供实验室使用。不适用于人类或动物的任何临床，治疗或诊断用途。不适合动物或人类食用。   |



For full product information, images and publications, please visit our [website](#).

產品圖片

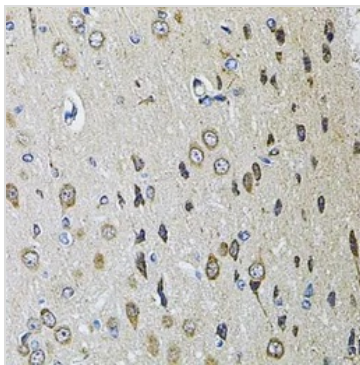


**GTX32824 WB Image**

WB analysis of various sample lysates using GTX32824 PTPRE antibody.

Dilution : 1:1000

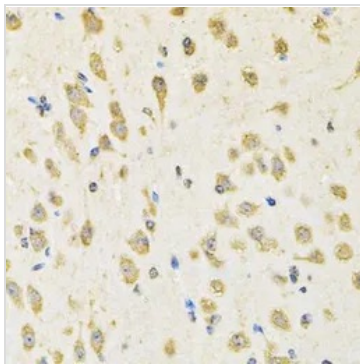
Loading : 25µg per lane



**GTX32824 IHC-P Image**

IHC-P analysis of rat brain tissue using GTX32824 PTPRE antibody.

Dilution : 1:100



**GTX32824 IHC-P Image**

IHC-P analysis of mouse brain tissue using GTX32824 PTPRE antibody.

Dilution : 1:100



For full product information, images and publications, please visit our [website](#).