

## CD43 antibody [SPM503]

**Cat. No. GTX34507**

宿主	Mouse
克隆	Monoclonal
同种型	IgG1
实验应用	WB, ICC/IF, IHC-P, FCM
种属反应	Human

## 实验应用

## 应用说明

\*最佳稀释倍数与浓度应由研究人员确认

Suggested dilution	Recommended dilution
WB	1-2µg/ml
ICC/IF	1-2µg/ml
IHC-P	1-2µg/ml for 30 minutes at RT
FCM	1-2µg/10 <sup>6</sup> cells

**Note : Staining of formalin-fixed tissues requires heating tissue sections in 10mM Tris with 1mM EDTA, pH 9.0, for 45 min at 95°C followed by cooling at RT for 20 minutes.**

以下为常规应用缩写的中文注解

WB: 免疫印迹

ICC/IF: 细胞染色

IHC-P: 石蜡切片

IHC-Fr: 冰冻切片

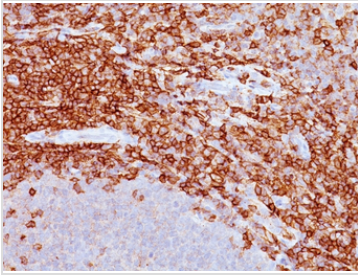
## 属性

形式	Liquid
存储溶液	PBS, 0.05% BSA
保存剂	0.05% Sodium azide
存放说明	Store as concentrated solution. Centrifuge briefly prior to opening vial. For short-term storage (1-2 weeks), store at 4°C. For long-term storage, aliquot and store at -20°C or below. Avoid multiple freeze-thaw cycles.
浓度	0.2 mg/ml (Please refer to the vial label for the specific concentration.)
偶联	Unconjugated
注意事项	仅供实验室使用。不适用于人类或动物的任何临床、治疗或诊断用途。不适合动物或人类食用。

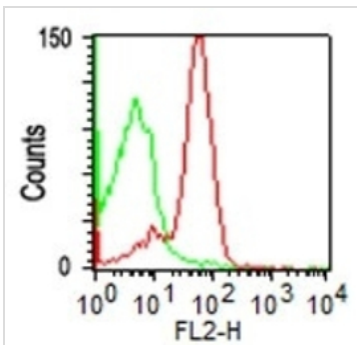


For full product information, images and publications, please visit our [website](#).

## 產品圖片

**GTX34507 IHC-P Image**

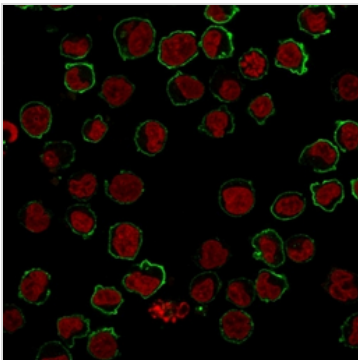
IHC-P analysis of human spleen tissue using GTX34507 CD43 antibody [SPM503].

**GTX34507 FCM Image**

FACS analysis of PBMCs using GTX34507 CD43 antibody [SPM503].

Red : Primary antibody

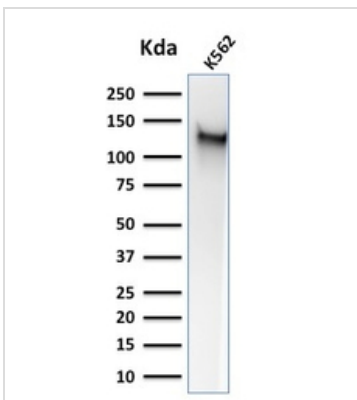
Green : Isotype control

**GTX34507 ICC/IF Image**

ICC/IF analysis of K562 cells using GTX34507 CD43 antibody [SPM503].

Green : Primary antibody

Red : nucleus

**GTX34507 WB Image**

WB analysis of K562 cell lysate using GTX34507 CD43 antibody [SPM503].



For full product information, images and publications, please visit our [website](#).