

FtsZ antibody

Cat. No. GTX36253

宿主	Rabbit
克隆	Polyclonal
同种型	IgG
实验应用	WB, ELISA
种属反应	Bacillus

引用文献 (1)

实验应用

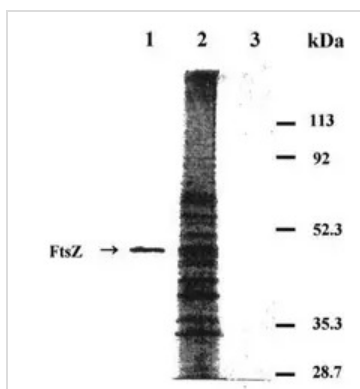
应用说明

For WB: Use at an assay dependent dilution. For ELISA: Use at an assay dependent dilution. Not yet tested in other applications.

属性

形式	Liquid
存放说明	Store as concentrated solution. Centrifuge briefly prior to opening vial. For short-term storage (1-2 weeks), store at 4°C. For long-term storage, aliquot and store at -20°C or below. Avoid multiple freeze-thaw cycles.
偶联	Unconjugated
注意事项	仅供实验室使用。不适用于人类或动物的任何临床、治疗或诊断用途。不适合动物或人类食用。

产品图片



GTX36253 WB Image

EBP (the fraction eluted from edeine B1 affinity column) was applied to SDS-PAGE, transferred to a PVDF membrane, exposed to FtsZ antibody (GTX36253).



For full product information, images and publications, please visit our [website](#).