

Elastin antibody

Cat. No. GTX37428

| | |
|------|-------------------|
| 宿主 | Rabbit |
| 克隆 | Polyclonal |
| 同种型 | IgG |
| 实验应用 | WB, IHC-P, IHC-Fr |
| 种属反应 | Human, Mouse, Rat |

引用文献 (4)

★★★★★ 产品评论 (1)

实验应用

应用说明

*最佳稀释倍数与浓度应由研究人员确认

| Suggested dilution | Recommended dilution |
|--------------------|----------------------|
| WB | Assay dependent |
| IHC-P | 1:100-500 |
| IHC-Fr | Assay dependent |

以下为常规应用缩写的中文注解

WB: 免疫印迹

ICC/IF: 细胞染色

IHC-P: 石蜡切片

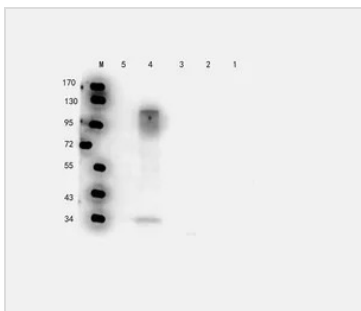
IHC-Fr: 冰冻切片

属性

| | |
|------|--|
| 形式 | Liquid |
| 存储溶液 | PBS, 1% BSA |
| 保存剂 | 0.02% Sodium azide |
| 存放说明 | Store as concentrated solution. Centrifuge briefly prior to opening vial. For short-term storage (1-2 weeks), store at 4°C. For long-term storage, aliquot and store at -20°C or below. Avoid multiple freeze-thaw cycles. |
| 浓度 | 0.5 mg/ml (Please refer to the vial label for the specific concentration.) |
| 偶联 | Unconjugated |
| RRID | AB_11175169 |
| 注意事项 | 仅供实验室使用。不适用于人类或动物的任何临床, 治疗或诊断用途。不适合动物或人类食用。 |

For full product information, images and publications, please visit our [website](#).

產品圖片

**GTX37428 WB Image**

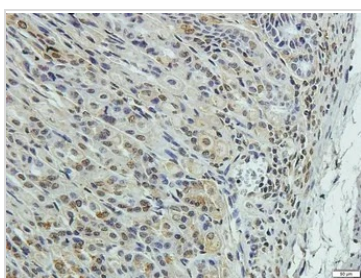
WB analysis of mouse spinal cord (Lane 1), rat bladder (Lane 2), mouse stomach (Lane 3), rat lung (Lane 4), rat testis (Lane 5) tissue lysates using GTX37428 Elastin antibody.

Dilution : 1 μ g/ml

**GTX37428 IHC-P Image**

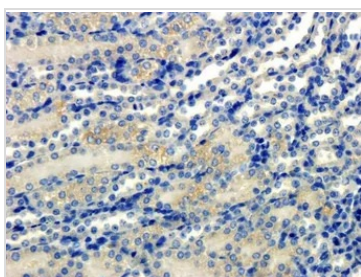
IHC-P analysis of rat spinal cord tissue using GTX37428 Elastin antibody.

Dilution : 2.5 μ g/ml

**GTX37428 IHC-P Image**

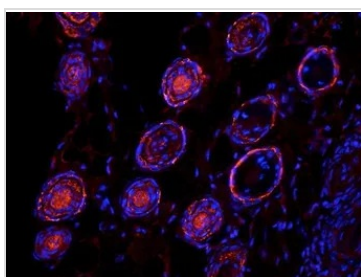
IHC-P analysis of mouse stomach tissue using GTX37428 Elastin antibody.

Dilution : 2.5 μ g/ml

**GTX37428 IHC-P Image**

IHC-P analysis of mouse kidney tissue using GTX37428 Elastin antibody.

Dilution : 1:100

**GTX37428 IHC-Fr Image**

IHC-Fr analysis of mouse skin tissue using GTX37428 Elastin antibody.

Dilution : 1:100



For full product information, images and publications, please visit our [website](#).