

TGF beta 1 antibody

Cat. No. GTX45121

宿主	Rabbit
克隆	Polyclonal
同种型	IgG
实验应用	WB, IHC-P, IHC-Fr, IHC
种属反应	Human, Mouse, Rat

引用文献 (15)

实验应用

应用说明

Recommended Starting Dilutions:

For WB: WB: 1:1000-1:10000.

For IHC: Use at a dilution of 1:200 - 1:500.

Optimal dilutions/concentrations should be determined by the end user.

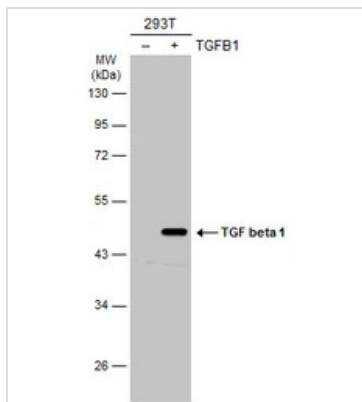
属性

形式	Liquid
存储溶液	PBS
保存剂	0.1% Sodium azide
存放说明	Store as concentrated solution. Centrifuge briefly prior to opening vial. For short-term storage (1-2 weeks), store at 4°C. For long-term storage, aliquot and store at -20°C or below. Avoid multiple freeze-thaw cycles.
浓度	1 mg/ml (Please refer to the vial label for the specific concentration.)
偶联	Unconjugated
RRID	AB_1080946
注意事项	仅供实验室使用。不适用于人类或动物的任何临床，治疗或诊断用途。不适合动物或人类食用。

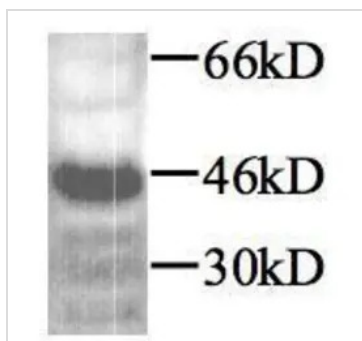


For full product information, images and publications, please visit our [website](#).

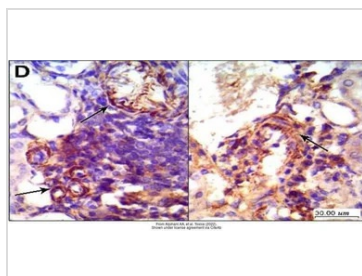
產品圖片

**GTX45121 WB Image**

Non-transfected (-) and transfected (+) 293T whole cell extracts (30 µg) were separated by 10% SDS-PAGE, and the membrane was blotted with TGF beta 1 antibody (GTX45121) diluted at 1:5000. The HRP-conjugated anti-rabbit IgG antibody (GTX213110-01) was used to detect the primary antibody.

**GTX45121 WB Image**

TGF beta1 detected by western blot in RAW264.7 cells using anti-TGFB1 antibody (GTX45121)

**GTX45121 IHC-P Image**

The data was published in the 2022 in Toxics. [PMID: 35622687](https://pubmed.ncbi.nlm.nih.gov/35622687/)



For full product information, images and publications, please visit our [website](https://www.genetex.com).