

GluR2 (phospho Ser880) antibody

Cat. No. GTX48639

宿主	Rabbit
克隆	Polyclonal
同种型	IgG
实验应用	WB
种属反应	Rat

实验应用

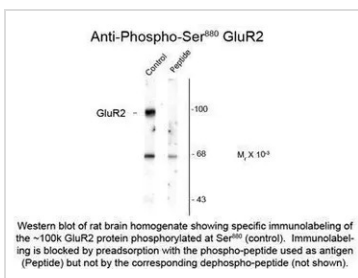
应用说明

Optimal working dilutions should be determined experimentally by the end user.

属性

形式	Liquid
存储溶液	10mM HEPES, 150mM NaCl, 0.01% BSA, 50% Glycerol
保存剂	No preservatives
存放说明	Store as concentrated solution. Centrifuge briefly prior to opening vial. For short-term storage (1-2 weeks), store at 4°C. For long-term storage, aliquot and store at -20°C or below. Avoid multiple freeze-thaw cycles.
浓度	Batch dependent (Please refer to the vial label for the specific concentration.)
偶联	Unconjugated
注意事项	仅供实验室使用。不适用于人类或动物的任何临床、治疗或诊断用途。不适合动物或人类食用。

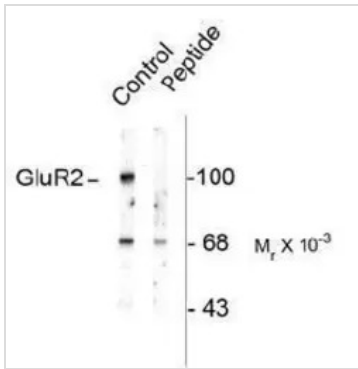
产品图片



GTX48639 WB Image



For full product information, images and publications, please visit our [website](#).

**GTX48639 WB Image**

Western Blot: Glutamate receptor 2 [Phospho-Ser880] Antibody [GTX48639] - rat brain homogenate showing specific immunolabeling of the ~100k GluR2 protein phosphorylated at Ser880 (control). Immunolabeling is blocked by preadsorption with the phospho-peptide used as antigen (Peptide) but not by the corresponding dephospho-peptide (not shown).



For full product information, images and publications, please visit our [website](#).