

AKT antibody

Cat. No. GTX48651

宿主	Sheep
克隆	Polyclonal
同种型	IgG
实验应用	WB, ICC/IF, FCM, ELISA, IHC
种属反应	Human

实验应用

应用说明

*最佳稀释倍数与浓度应由研究人员确认

Suggested dilution	Recommended dilution
WB	1:500-1:2000
ICC/IF	Assay dependent
FCM	Assay dependent
ELISA	1:5000-1:20000
IHC	Assay dependent

以下为常规应用缩写的中文注解

WB: 免疫印迹

ICC/IF: 细胞染色

IHC-P: 石蜡切片

IHC-Fr: 冰冻切片

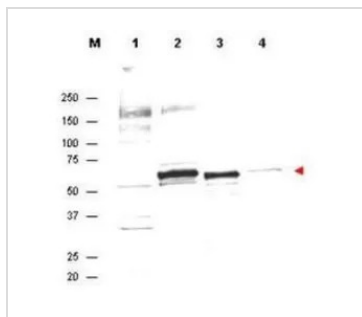
属性

形式	Liquid
存储溶液	20mM Potassium Phosphate, 150mM NaCl
保存剂	0.1% Sodium azide
存放说明	Store as concentrated solution. Centrifuge briefly prior to opening vial. For short-term storage (1-2 weeks), store at 4°C. For long-term storage, aliquot and store at -20°C or below. Avoid multiple freeze-thaw cycles.
浓度	0.9 mg/ml (Please refer to the vial label for the specific concentration.)
偶联	Unconjugated
注意事项	仅供实验室使用。不适用于人类或动物的任何临床、治疗或诊断用途。不适合动物或人类食用。

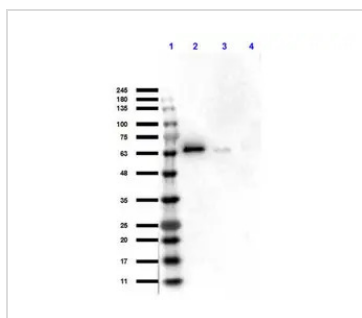


For full product information, images and publications, please visit our [website](#).

產品圖片

**GTX48651 WB Image**

Anti-AKT Antibody in western blot showing detection of endogenous protein in whole cell extracts from H2O2 treated MCF7 cells (lane 2). Recombinant AKT is detected in lane 3. Lanes 1 and 4 contain wcl from HeLa and A431 cells, respectively. Specific band staining is completely blocked when antibody is pre-incubated with the immunizing peptide (data not shown). The band at ~55-60 kDa, indicated by the arrowhead, corresponds to the expected molecular weight of AKT. AKT antibody was diluted 1:300 in 1% BLOTTO and reacted with the membrane overnight at 4° C. IRDYE800 conjugated Dnky-anti-Sheep IgG was used at a 1:10,000 dilution for 45 min at room temperature.

**GTX48651 WB Image**

WB analysis of various samples using GTX48651 AKT antibody.

Lane 1 : Protein ladder

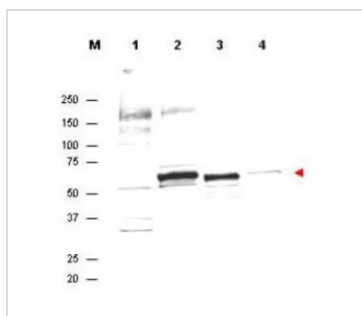
Lane 2 : Recombinant AKT1 protein

Lane 3 : Recombinant AKT2 protein

Lane 3 : Recombinant AKT3 protein

Loading : 50 ng

Dilution : 1:1000

**GTX48651 WB Image**

WB analysis of various samples using GTX48651 AKT antibody.

Lane 1 : HeLa whole cell lysate

Lane 2 : H2O2-treated MCF-7 whole cell lysate

Lane 3 : Recombinant AKT protein

Lane 4 : A431 whole cell lysate

Loading : 35 µg

Dilution : 1:300



For full product information, images and publications, please visit our [website](#).