

## MFAP5 antibody

**Cat. No. GTX48656**

宿主	Rabbit
克隆	Polyclonal
同种型	IgG
实验应用	WB, ELISA
种属反应	Human, Chimpanzee

## 实验应用

## 应用说明

\*最佳稀释倍数与浓度应由研究人员确认

Suggested dilution	Recommended dilution
WB	1:250-1:1000
ELISA	1:5000-1:20000

以下为常规应用缩写的中文注解

WB: 免疫印迹

ICC/IF: 细胞染色

IHC-P: 石蜡切片

IHC-Fr: 冰冻切片

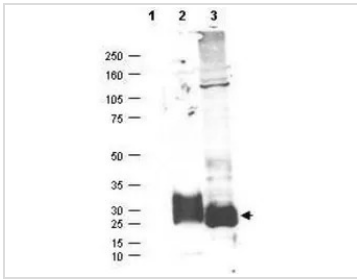
## 属性

形式	Liquid
存储溶液	20mM Potassium Phosphate, 150mM NaCl
保存剂	0.01% Sodium azide
存放说明	Store as concentrated solution. Centrifuge briefly prior to opening vial. For short-term storage (1-2 weeks), store at 4°C. For long-term storage, aliquot and store at -20°C or below. Avoid multiple freeze-thaw cycles.
浓度	0.95 mg/ml (Please refer to the vial label for the specific concentration.)
偶联	Unconjugated
注意事项	仅供实验室使用。不适用于人类或动物的任何临床，治疗或诊断用途。不适合动物或人类食用。



For full product information, images and publications, please visit our [website](#).

## 產品圖片

**GTX48656 WB Image**

Western blot using GeneTex's affinity purified anti-MAGP-2 antibody shows detection (arrowhead) of secreted MAGP-2 (lane 2) and MAGP-2 present in a MAGP-2 transfected HEK293 lysate (lane 3). No staining is detected in supernatants from non-transfected cells (lane 1). After SDS-PAGE and transfer, the membrane was probed with the primary antibody diluted to 1:100 in TBST with 5% BSA overnight at 4° C.



For full product information, images and publications, please visit our [website](#).