

## KCTD15 antibody [AT4C3]

Cat. No. GTX50002

宿主	Mouse
克隆	Monoclonal
同种型	IgG3
实验应用	WB, ICC/IF, FCM, ELISA, PLA
种属反应	Human

引用文献 (4)

## 实验应用

## 应用说明

\*最佳稀释倍数与浓度应由研究人员确认

Suggested dilution	Recommended dilution
WB	Assay dependent
ICC/IF	Assay dependent
FCM	Assay dependent
ELISA	Assay dependent
PLA	Assay dependent

以下为常规应用缩写的中文注解

WB: 免疫印迹

ICC/IF: 细胞染色

IHC-P: 石蜡切片

IHC-Fr: 冰冻切片

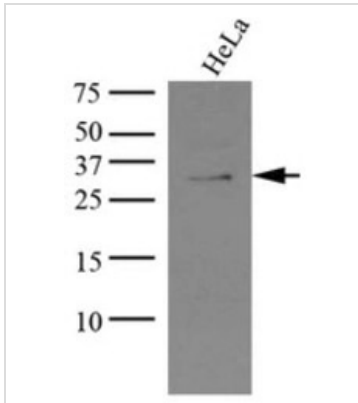
## 属性

形式	Liquid
存储溶液	PBS
保存剂	0.1% Sodium azide
存放说明	Store as concentrated solution. Centrifuge briefly prior to opening vial. For short-term storage (1-2 weeks), store at 4°C. For long-term storage, aliquot and store at -20°C or below. Avoid multiple freeze-thaw cycles.
浓度	1 mg/ml (Please refer to the vial label for the specific concentration.)
偶联	Unconjugated
注意事项	仅供实验室使用。不适用于人类或动物的任何临床、治疗或诊断用途。不适合动物或人类食用。



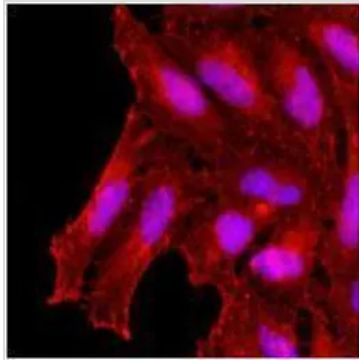
For full product information, images and publications, please visit our [website](#).

產品圖片



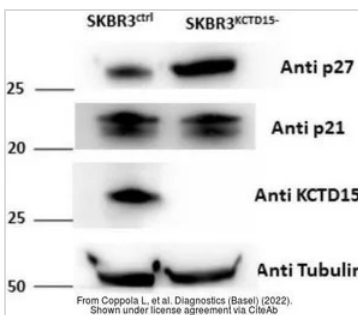
**GTX50002 WB Image**

Cell lysates of HeLa (35ug) were resolved by SDS-PAGE, transferred to NC membrane and probed with anti-human KCTD15 (1:1000). Proteins were visualized using a goat anti-mouse secondary antibody conjugated to HRP and an ECL detection system.



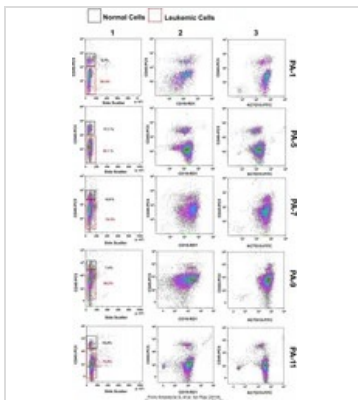
**GTX50002 ICC/IF Image**

Immunofluorescence of human HeLa cells stained with monoclonal anti-human KCTD15 antibody (1:500) with Texas Red (Red). Nucleus was stained by Hoechst 33342 (Blue).



**GTX50002 WB Image**

The data was published in the 2022 in Diagnostics (Basel). [PMID: 35328144](https://pubmed.ncbi.nlm.nih.gov/35328144/)



**GTX50002 FCM Image**

The data was published in the journal Sci Rep in 2019. [PMID: 31882877](https://pubmed.ncbi.nlm.nih.gov/31882877/)



For full product information, images and publications, please visit our [website](https://www.genetex.com).