

IRF3 antibody [3F10]

Cat. No. GTX50058

宿主	Mouse
克隆	Monoclonal
同种型	IgG1
实验应用	WB, ICC/IF, IP, ELISA
种属反应	Human

实验应用

应用说明

We recommend the following starting dilutions:

Western Blot: Use at 1:1,000 ~ 2,000.

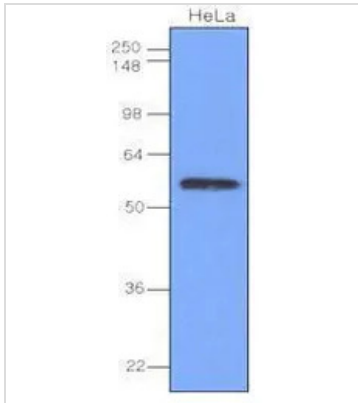
Optimal working concentrations should be determined experimentally by the end user.

属性

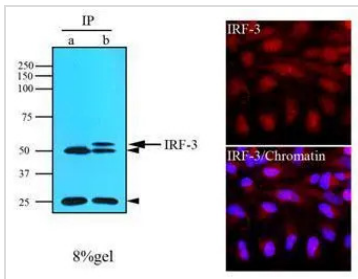
形式	Liquid
存储溶液	PBS
保存剂	0.1% Sodium azide
存放说明	Store as concentrated solution. Centrifuge briefly prior to opening vial. For short-term storage (1-2 weeks), store at 4°C. For long-term storage, aliquot and store at -20°C or below. Avoid multiple freeze-thaw cycles.
浓度	1 mg/ml (Please refer to the vial label for the specific concentration.)
偶联	Unconjugated
注意事项	仅供实验室使用。不适用于人类或动物的任何临床，治疗或诊断用途。不适合动物或人类食用。



For full product information, images and publications, please visit our [website](#).

產品圖片

GTX50058 WB Image

Cell lysates of HeLa(40ug) were resolved by SDS-PAGE, transferred to NC membrane and probed with anti-human IRF-3 (1:1,000). Proteins were visualized using a goat anti-mouse secondary antibody conjugated to HRP and an ECL detection system.


GTX50058 ICC/IF Image

Immunofluorescence of human HeLa cells stained with IRF-3 (1:500) with Texas-Red and Hoechst 33342 (Blue) for nucleus staining.



For full product information, images and publications, please visit our [website](#).