

KIR2D antibody [2H6]

Cat. No. GTX50072

宿主	Mouse
克隆	Monoclonal
同种型	IgG2b
实验应用	WB, ELISA
种属反应	Human

实验应用

应用说明

We recommend the following starting dilutions:

Western Blot: Use at 1:500 ~ 1,000.

Optimal working concentrations should be determined experimentally by the end user.

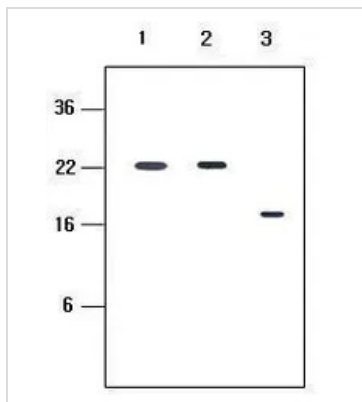
属性

形式	Liquid
存储溶液	PBS
保存剂	0.1% Sodium azide
存放说明	Store as concentrated solution. Centrifuge briefly prior to opening vial. For short-term storage (1-2 weeks), store at 4°C. For long-term storage, aliquot and store at -20°C or below. Avoid multiple freeze-thaw cycles.
浓度	1 mg/ml (Please refer to the vial label for the specific concentration.)
偶联	Unconjugated
注意事项	仅供实验室使用。不适用于人类或动物的任何临床，治疗或诊断用途。不适合动物或人类食用。



For full product information, images and publications, please visit our [website](#).

產品圖片



GTX50072 WB Image

Human recombinant protein kIR2DL1, kIR2DL3 and kIR2DL4 (each 20ng per well) were resolved by SDS-PAGE, transferred to PVDF membrane and probed with anti-human kIR2D (1:500). Proteins were visualized using a goat anti-mouse secondary antibody conjugated t



For full product information, images and publications, please visit our [website](#).