

STAT2 (phospho Tyr690) antibody

Cat. No. GTX50721

宿主	Rabbit
克隆	Polyclonal
同种型	IgG
实验应用	WB
种属反应	Human

引用文献 (2)

实验应用

应用说明

*最佳稀释倍数与浓度应由研究人员确认

Suggested dilution	Recommended dilution
WB	1:1000

以下为常规应用缩写的中文注解

WB: 免疫印迹

ICC/IF: 细胞染色

IHC-P: 石蜡切片

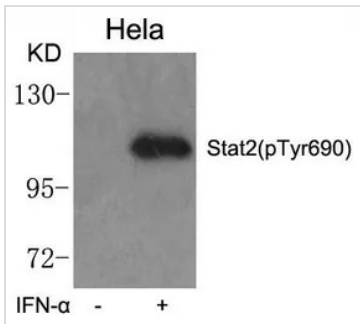
IHC-Fr: 冰冻切片

属性

形式	Liquid
存储溶液	PBS, 150mM NaCl, 50% Glycerol
保存剂	0.02% Sodium azide
存放说明	Store as concentrated solution. Centrifuge briefly prior to opening vial. For short-term storage (1-2 weeks), store at 4°C. For long-term storage, aliquot and store at -20°C or below. Avoid multiple freeze-thaw cycles.
浓度	1 mg/ml (Please refer to the vial label for the specific concentration.)
偶联	Unconjugated
RRID	AB_11170713
注意事项	仅供实验室使用。不适用于人类或动物的任何临床，治疗或诊断用途。不适合动物或人类食用。

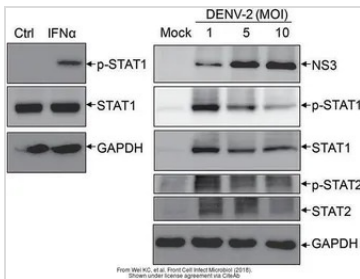
For full product information, images and publications, please visit our [website](#).

產品圖片



GTX50721 WB Image

WB analysis of extracts from HeLa cells untreated or treated with IFN-α using GTX50721 STAT2 (phospho Tyr690) antibody.



GTX50721 WB Image

The data was published in the journal Front Cell Infect Microbiol in 2018. [PMID: 30186771](https://pubmed.ncbi.nlm.nih.gov/30186771/)



For full product information, images and publications, please visit our [website](https://www.genetex.com).