

C3orf21 antibody

Cat. No. GTX52264

宿主	Rabbit
克隆	Polyclonal
同种型	IgG
实验应用	WB, ELISA
种属反应	Human, Mouse

实验应用

应用说明

*最佳稀释倍数与浓度应由研究人员确认

Suggested dilution	Recommended dilution
WB	1:300-1000
ELISA	Assay dependent

以下为常规应用缩写的中文注解

WB: 免疫印迹

ICC/IF: 细胞染色

IHC-P: 石蜡切片

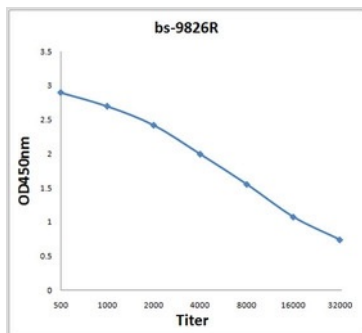
IHC-Fr: 冰冻切片

属性

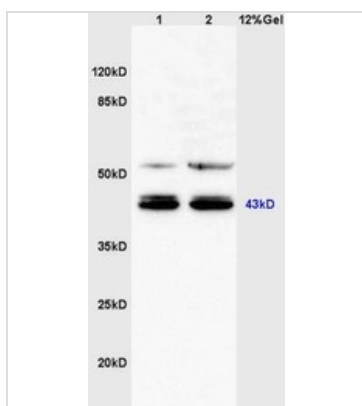
形式	Liquid
存储溶液	1% BSA, 50% Glycerol
保存剂	0.09% Sodium azide
存放说明	Store as concentrated solution. Centrifuge briefly prior to opening vial. For short-term storage (1-2 weeks), store at 4°C. For long-term storage, aliquot and store at -20°C or below. Avoid multiple freeze-thaw cycles.
浓度	1 mg/ml (Please refer to the vial label for the specific concentration.)
偶联	Unconjugated
注意事项	仅供实验室使用。不适用于人类或动物的任何临床、治疗或诊断用途。不适合动物或人类食用。



For full product information, images and publications, please visit our [website](#).

產品图片

GTX52264 ELISA Image

ELISA analysis of 2 μ g GTX52264 antigen in 100 μ l buffer using serial diluted GTX52264 C3orf21 antibody.


GTX52264 WB Image

WB analysis of mouse heart tissue lysate using GTX52264 C3orf21 antibody.

Dilution : 1:200



For full product information, images and publications, please visit our [website](#).