

Synaptotagmin 1 (phospho Ser312) + Synaptotagmin 2 (phospho Ser309) antibody

Cat. No. GTX52317

宿主	Rabbit
克隆	Polyclonal
同种型	IgG
实验应用	WB, IHC
种属反应	Human, Mouse, Rat

实验应用

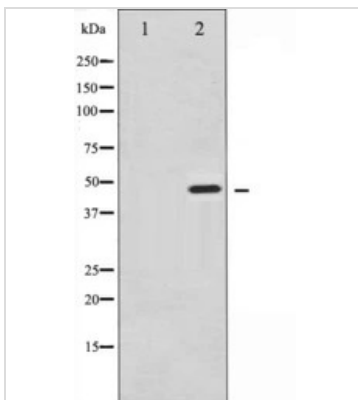
应用说明

WB 1:500-1:2000, IHC 1:50-1:200

属性

形式	Liquid
存储溶液	PBS, 150mM NaCl, 50% Glycerol
保存剂	0.02% Sodium azide
存放说明	Store as concentrated solution. Centrifuge briefly prior to opening vial. For short-term storage (1-2 weeks), store at 4°C. For long-term storage, aliquot and store at -20°C or below. Avoid multiple freeze-thaw cycles.
浓度	1 mg/ml (Please refer to the vial label for the specific concentration.)
偶联	Unconjugated
注意事项	仅供实验室使用。不适用于人类或动物的任何临床、治疗或诊断用途。不适合动物或人类食用。

产品图片



GTX52317 WB Image

Western blot analysis of Synaptotagmin phosphorylation expression in Sobital treated 293 whole cell lysates, The lane on the left is treated with the antigen-specific peptide.



For full product information, images and publications, please visit our [website](#).