

## CaMKII alpha (phospho Thr286) antibody

Cat. No. GTX52346

|      |                   |
|------|-------------------|
| 宿主   | Rabbit            |
| 克隆   | Polyclonal        |
| 同种型  | IgG               |
| 实验应用 | WB, ICC/IF, IHC   |
| 种属反应 | Human, Mouse, Rat |

## 实验应用

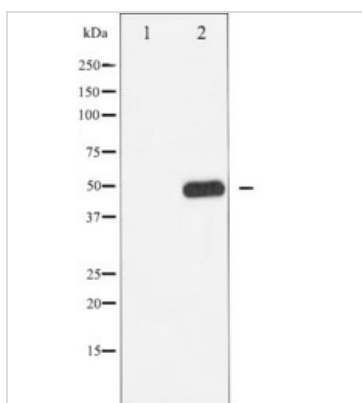
## 应用说明

WB 1:500-1:2000, IHC 1:50-1:200, IF/ICC 1:100-1:500

## 属性

|      |  |
|------|--|
| 形式   | Liquid   |
| 存储溶液 | PBS, 150mM NaCl, 50% Glycerol  |
| 保存剂  | 0.02% Sodium azide   |
| 存放说明 | Store as concentrated solution. Centrifuge briefly prior to opening vial. For short-term storage (1-2 weeks), store at 4°C. For long-term storage, aliquot and store at -20°C or below. Avoid multiple freeze-thaw cycles. |
| 浓度   | 1 mg/ml (Please refer to the vial label for the specific concentration.)   |
| 偶联   | Unconjugated   |
| 注意事项 | 仅供实验室使用。不适用于人类或动物的任何临床、治疗或诊断用途。不适合动物或人类食用。   |

## 产品图片



## GTX52346 WB Image

Western blot analysis of CaMK2 phosphorylation expression in K562 whole cell lysates, The lane on the left is treated with the antigen-specific peptide.



For full product information, images and publications, please visit our [website](https://www.genetex.com).