

CMPK2 antibody

Cat. No. GTX53527

宿主	Rabbit
克隆	Polyclonal
同种型	IgG
实验应用	WB, IHC-P, FCM
种属反应	Human

实验应用

应用说明

*最佳稀释倍数与浓度应由研究人员确认

Suggested dilution	Recommended dilution
WB	1:1000
IHC-P	1:50-1:100
FCM	1:10-1:50

以下为常规应用缩写的中文注解

WB: 免疫印迹

ICC/IF: 细胞染色

IHC-P: 石蜡切片

IHC-Fr: 冰冻切片

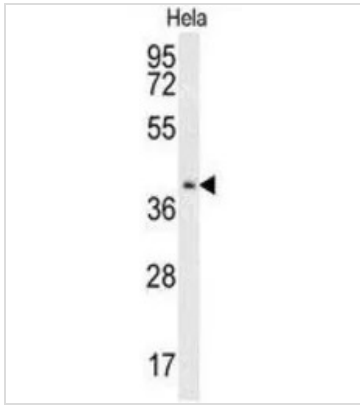
属性

形式	Liquid
存储溶液	PBS
保存剂	0.09% Sodium azide
存放说明	Store as concentrated solution. Centrifuge briefly prior to opening vial. For short-term storage (1-2 weeks), store at 4°C. For long-term storage, aliquot and store at -20°C or below. Avoid multiple freeze-thaw cycles.
浓度	Batch dependent (Please refer to the vial label for the specific concentration.)
偶联	Unconjugated
注意事项	仅供实验室使用。不适用于人类或动物的任何临床, 治疗或诊断用途。不适合动物或人类食用。



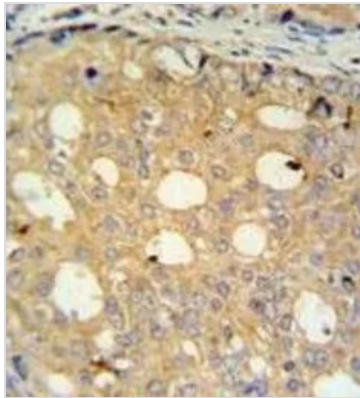
For full product information, images and publications, please visit our [website](#).

產品圖片



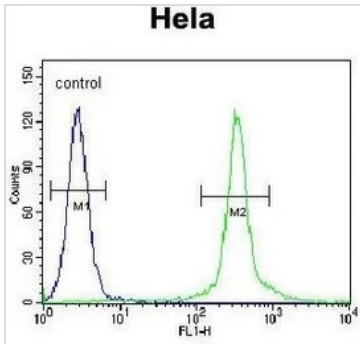
GTX53527 WB Image

WB analysis of HeLa cell lysate (35ug/lane) using GTX53527 CMPK2 antibody.



GTX53527 IHC-P Image

IHC-P analysis of human prostate carcinoma using GTX53527 CMPK2 antibody.



GTX53527 FCM Image

FACS analysis of HeLa cells using GTX53527 CMPK2 antibody.

Green : primary antibody

Blue : negative control



For full product information, images and publications, please visit our [website](#).