

L-FABP antibody [2G4]

Cat. No. GTX53712

宿主	Mouse
克隆	Monoclonal
同种型	IgG1
实验应用	WB, IHC-P, ELISA
种属反应	Human

引用文献 (1)

实验应用

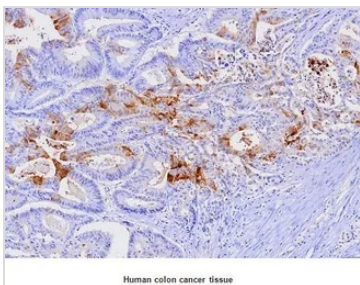
应用说明

The antibody has been tested by ELISA, Western blot and immunohistochemistry analysis to assure specificity and reactivity. Since application varies, however, each investigation should be titrated by the reagent to obtain optimal results. Recommended dilution range for Western blot is 1:1,000 ~ 1:2,000 and immunohistochemistry analysis is 1:100~300. Recommended starting dilution for Western blot is 1:1,000 and Immunohistochemistry is 1:100.

属性

形式	Liquid
存储溶液	PBS
保存剂	0.1% Sodium azide
存放说明	Store as concentrated solution. Centrifuge briefly prior to opening vial. For short-term storage (1-2 weeks), store at 4°C. For long-term storage, aliquot and store at -20°C or below. Avoid multiple freeze-thaw cycles.
浓度	1 mg/ml (Please refer to the vial label for the specific concentration.)
偶联	Unconjugated
注意事项	仅供实验室使用。不适用于人类或动物的任何临床, 治疗或诊断用途。不适合动物或人类食用。

产品图片



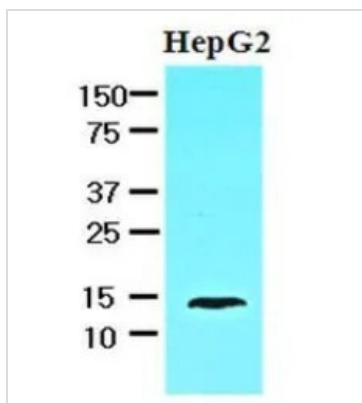
Human colon cancer tissue

GTX53712 IHC-P Image

IHC-P analysis of human colon cancer tissue using FABP1 antibody at a dilution of 1:100.



For full product information, images and publications, please visit our [website](#).

**GTX53712 WB Image**

WB analysis of HepG2 lysate (30ug) using FABP1 antibody at a dilution of 1:1,000.



For full product information, images and publications, please visit our [website](#).