

PRPS1 antibody [AT1E11]

Cat. No. GTX53772

宿主	Mouse
克隆	Monoclonal
同种型	IgG2a
实验应用	WB, ELISA
种属反应	Human

实验应用

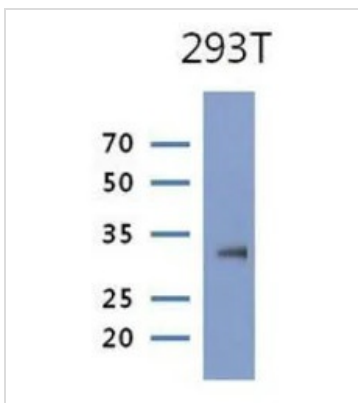
应用说明

The antibody has been tested by ELISA, Western blot analysis to assure specificity and reactivity. Since application varies, however, each investigation should be titrated by the reagent to obtain optimal results. Recommended starting dilution is 1:1000.

属性

形式	Liquid
存储溶液	PBS, 10% Glycerol
保存剂	0.02% Sodium azide
存放说明	Store as concentrated solution. Centrifuge briefly prior to opening vial. For short-term storage (1-2 weeks), store at 4°C. For long-term storage, aliquot and store at -20°C or below. Avoid multiple freeze-thaw cycles.
浓度	1 mg/ml (Please refer to the vial label for the specific concentration.)
偶联	Unconjugated
注意事项	仅供实验室使用。不适用于人类或动物的任何临床，治疗或诊断用途。不适合动物或人类食用。

产品图片



GTX53772 WB Image

WB analysis of 293T lysate (30ug) using PRPS1 antibody at a dilution of 1:1,000.



For full product information, images and publications, please visit our [website](#).