

Histone H3K79me3 (tri-methyl Lys79) antibody

Cat. No. GTX54111

宿主	Rabbit
克隆	Polyclonal
同种型	IgG
实验应用	WB, ICC/IF, IHC-P, Dot, ChIP assay
种属反应	Human, Mouse, Rat

实验应用

应用说明

*最佳稀释倍数与浓度应由研究人员确认

Suggested dilution	Recommended dilution
WB	1:500 - 1:2000
ICC/IF	1:50 - 1:200
IHC-P	1:50 - 1:200
Dot	Assay dependent
ChIP assay	1:20 - 1:100

以下为常规应用缩写的中文注解

WB: 免疫印迹

ICC/IF: 细胞染色

IHC-P: 石蜡切片

IHC-Fr: 冰冻切片

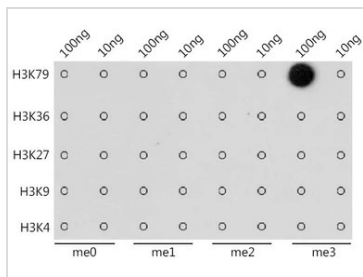
属性

形式	Liquid
存储溶液	PBS, 50% Glycerol
保存剂	0.05% ProClin 300
存放说明	Store as concentrated solution. Centrifuge briefly prior to opening vial. For short-term storage (1-2 weeks), store at 4°C. For long-term storage, aliquot and store at -20°C or below. Avoid multiple freeze-thaw cycles.
浓度	1 mg/ml (Please refer to the vial label for the specific concentration.)
偶联	Unconjugated
注意事项	仅供实验室使用。不适用于人类或动物的任何临床、治疗或诊断用途。不适合动物或人类食用。



For full product information, images and publications, please visit our [website](#).

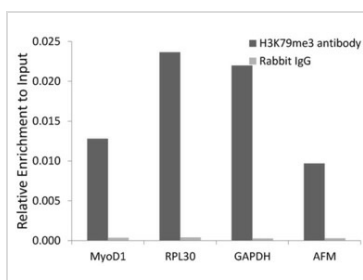
產品圖片



GTX54111 Dot Image

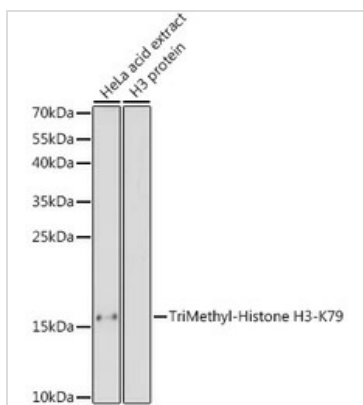
Dot blot analysis of all sorts of methylation peptides using GTX54111 Histone H3K79me3 (tri-methyl Lys79) antibody.

Dilution : 1:1000



GTX54111 ChIP assay Image

ChIP analysis of 293 cell lysate using GTX54111 Histone H3K79me3 (tri-methyl Lys79) antibody. The amount of immunoprecipitated DNA was checked by quantitative PCR. Histogram was constructed by the ratios of the immunoprecipitated DNA to the input.

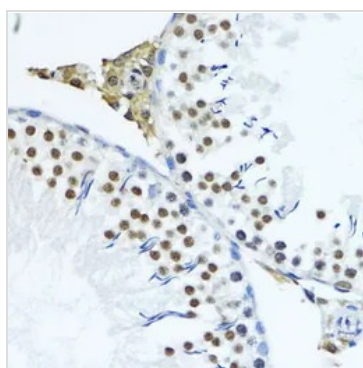


GTX54111 WB Image

WB analysis of HeLa cell lysate using GTX54111 Histone H3K79me3 (tri-methyl Lys79) antibody.

Dilution : 1:1000

Loading : 25µg per lane



GTX54111 IHC-P Image

IHC-P analysis of rat testis tissue using GTX54111 Histone H3K79me3 (tri-methyl Lys79) antibody.

Dilution : 1:200



For full product information, images and publications, please visit our [website](#).