

## Cav alpha 2/delta 2 antibody

Cat. No. GTX54770

宿主	Rabbit
克隆	Polyclonal
同种型	IgG
实验应用	WB, IHC-Fr
种属反应	Human, Mouse, Rat

## 实验应用

## 应用说明

\*最佳稀释倍数与浓度应由研究人员确认

Suggested dilution	Recommended dilution
WB	Assay dependent
IHC-Fr	Assay dependent

以下为常规应用缩写的中文注解

WB: 免疫印迹

ICC/IF: 细胞染色

IHC-P: 石蜡切片

IHC-Fr: 冰冻切片

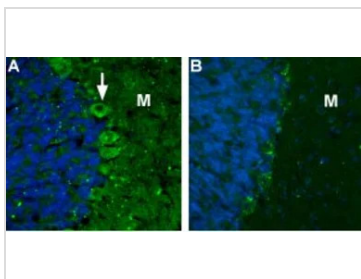
## 属性

形式	Liquid
存储溶液	PBS, 1% BSA
保存剂	0.05% Sodium azide
存放说明	Store as concentrated solution. Centrifuge briefly prior to opening vial. For short-term storage (1-2 weeks), store at 4°C. For long-term storage, aliquot and store at -20°C or below. Avoid multiple freeze-thaw cycles.
浓度	1 mg/ml (Please refer to the vial label for the specific concentration.)
偶联	Unconjugated
注意事项	仅供实验室使用。不适用于人类或动物的任何临床、治疗或诊断用途。不适合动物或人类食用。



For full product information, images and publications, please visit our [website](#).

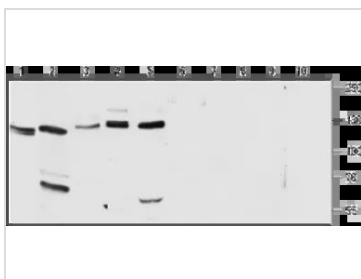
## 產品圖片

**GTX54770 IHC-Fr Image**

IHC-Fr analysis of rat cerebellum tissue using GTX54770 Cav alpha 2/delta 2 antibody. DAPI is used as the counterstain (blue).

Panel A : CaVα2δ2 (green) appears in the soma of Purkinje cells (arrow) and in the molecular layer (M).

Panel B : Preincubation of the antibody with the control peptide antigen.

**GTX54770 WB Image**

WB analysis of rat lung (lanes 1 and 6), rat brain (lanes 2 and 7), mouse brain (lanes 3 and 8), rat heart (lanes 4 and 9), and mouse heart (lanes 5 and 10) lysates using GTX54770 Cav alpha 2/delta 2 antibody preincubated with or without immunogen peptide.

Dilution : 1:200



For full product information, images and publications, please visit our [website](#).