

CNGA2 antibody

Cat. No. GTX54816

| | |
|------|--------------------|
| 宿主 | Rabbit |
| 克隆 | Polyclonal |
| 同种型 | IgG |
| 实验应用 | WB, ICC/IF, IHC-Fr |
| 种属反应 | Human, Mouse, Rat |

实验应用

应用说明

*最佳稀释倍数与浓度应由研究人员确认

| Suggested dilution | Recommended dilution |
|--------------------|----------------------|
| WB | Assay dependent |
| ICC/IF | Assay dependent |
| IHC-Fr | Assay dependent |

以下为常规应用缩写的中文注解

WB: 免疫印迹

ICC/IF: 细胞染色

IHC-P: 石蜡切片

IHC-Fr: 冰冻切片

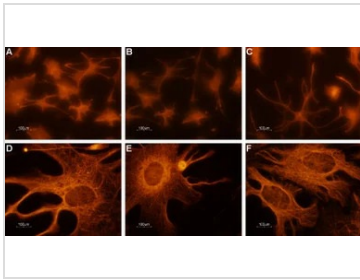
属性

| | |
|------|--|
| 形式 | Liquid |
| 存储溶液 | PBS, 1% BSA |
| 保存剂 | 0.05% Sodium azide |
| 存放说明 | Store as concentrated solution. Centrifuge briefly prior to opening vial. For short-term storage (1-2 weeks), store at 4°C. For long-term storage, aliquot and store at -20°C or below. Avoid multiple freeze-thaw cycles. |
| 浓度 | 0.8 mg/ml (Please refer to the vial label for the specific concentration.) |
| 偶联 | Unconjugated |
| 注意事项 | 仅供实验室使用。不适用于人类或动物的任何临床, 治疗或诊断用途。不适合动物或人类食用。 |



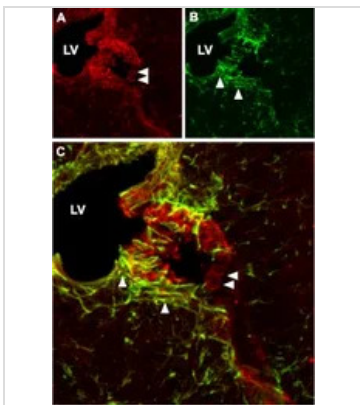
For full product information, images and publications, please visit our [website](#).

產品圖片

**GTX54816 ICC/IF Image**

ICC/IF analysis of PFA-fixed rat cerebellum primary culture cells using GTX54816 CNGA2 antibody.

Dilution : 1:100

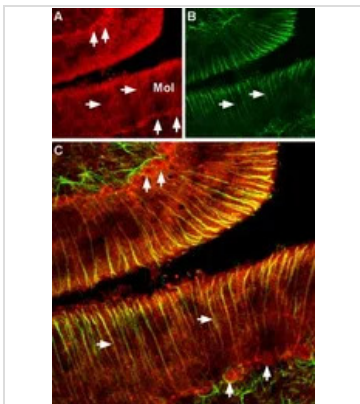
**GTX54816 IHC-Fr Image**

IHC-Fr analysis of mouse cerebrum tissue using GTX54816 CNGA2 antibody.

Panel A : CNGA2 (red) appears in cells lining up the wall of the lateral ventricle (LV) (horizontal arrows).

Panel B : Staining of astrocytes with mouse anti-gial fibrillary acidic protein (GFAP, green) demonstrates penetration of astrocytic fibers (vertical arrows) into the wall of the lateral ventricle.

Panel C : Merge of panels A and B.

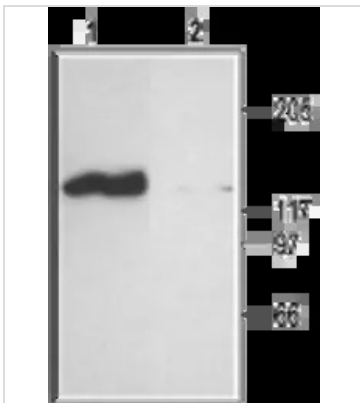
**GTX54816 IHC-Fr Image**

IHC-Fr analysis of rat cerebellum tissue using GTX54816 CNGA2 antibody.

Panel A : CNGA2 (red) appears in Purkinje cells (vertical arrows) and in astrocytic fibers (horizontal arrows) traversing the cerebellar molecular layer (Mol).

Panel B : Staining of astrocytes with mouse anti-gial fibrillary acidic protein (GFAP, green) demonstrates the full distribution of astrocytic fibers (horizontal arrows) in the cerebellum.

Panel C : Merge of panels A and B.

**GTX54816 WB Image**

WB analysis of rat brain membrane lysate using GTX54816 CNGA2 antibody preincubated with or without immunogen peptide.

Dilution : 1:200



For full product information, images and publications, please visit our [website](http://www.genetex.com).