

## Orexin Receptor 1 antibody

Cat. No. GTX54847

宿主	Rabbit
克隆	Polyclonal
同种型	IgG
实验应用	WB, ICC/IF, IHC-P, IHC-Fr
种属反应	Human, Mouse, Rat

## 实验应用

## 应用说明

\*最佳稀释倍数与浓度应由研究人员确认

Suggested dilution	Recommended dilution
WB	Assay dependent
ICC/IF	Assay dependent
IHC-P	Assay dependent
IHC-Fr	Assay dependent

以下为常规应用缩写的中文注解

WB: 免疫印迹

ICC/IF: 细胞染色

IHC-P: 石蜡切片

IHC-Fr: 冰冻切片

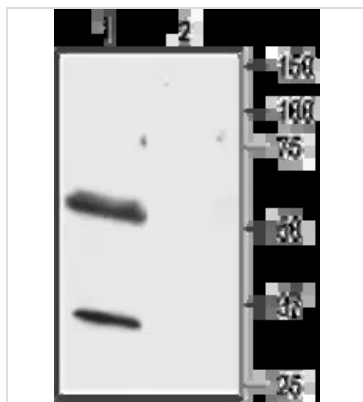
## 属性

形式	Liquid
存储溶液	PBS, 1% BSA
保存剂	0.05% Sodium azide
存放说明	Store as concentrated solution. Centrifuge briefly prior to opening vial. For short-term storage (1-2 weeks), store at 4°C. For long-term storage, aliquot and store at -20°C or below. Avoid multiple freeze-thaw cycles.
浓度	0.8 mg/ml (Please refer to the vial label for the specific concentration.)
偶联	Unconjugated
注意事项	仅供实验室使用。不适用于人类或动物的任何临床、治疗或诊断用途。不适合动物或人类食用。



For full product information, images and publications, please visit our [website](#).

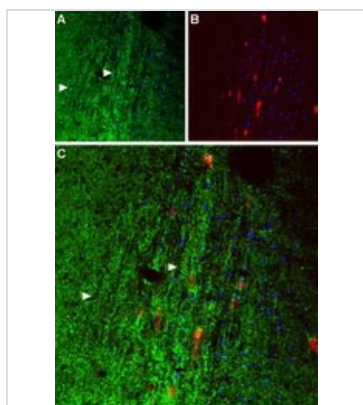
## 產品圖片



### GTX54847 WB Image

WB analysis of rat brain lysate using GTX54847 Orexin Receptor 1 antibody preincubated with or without immunogen peptide.

Dilution : 1:500



### GTX54847 IHC-Fr Image

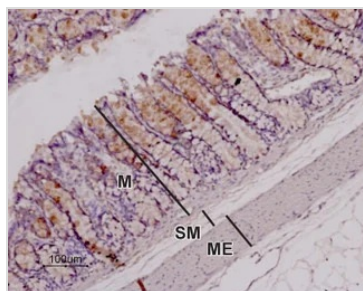
IHC-Fr analysis of mouse septum tissue using GTX54847 Orexin Receptor 1 antibody. Cell nuclei (blue) are visualized with Hoechst 33342.

Panel A : OX1R (green) appears in axonal processes (right-pointing triangles).

Panel B : Parvalbumin (red) appears in septal neurons.

Panel C : Merge of OX1R and parvalbumin suggests that orexinergic innervation covers the entire septal nucleus rather than restricted to individual neurons.

Dilution : 1:50

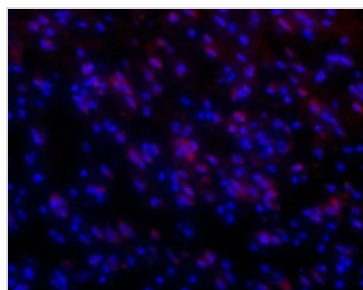


### GTX54847 IHC-P Image

IHC-P analysis of rat colon tissue using GTX54847 Orexin Receptor 1 antibody. Note that the stain (red-brown color) is highly specific for absorptive cells in the superior third of the intestinal glands.

Immunolabeling was detected using DAB as the chromogen and hematoxylin as the counterstain.

Dilution : 1:100



### GTX54847 IHC-Fr Image

IHC-Fr analysis of rat brain tissue using GTX54847 Orexin Receptor 1 antibody.

Red : Primary antibody

Blue : Hoechst 33342 is used as a counterstain

Dilution : 1:500



For full product information, images and publications, please visit our [website](https://www.genetex.com).